

Phone: 916.683.7111  
Fax: 916.627.4400

www.elkgrovecity.org

PUBLIC WORKS  
8401 Laguna Palms Way  
Elk Grove, California 95758



## Standards Update Transmittal

Reference Number: 2024v-25  
Standards: Standard Drawing, T-7 and T-19

### Update:

1. Modification to Standard Drawing:
  - a. T-7 BIKE LOOP AND BIKE LEGEND INSTALLATION DETAIL, removal of note 3 to allow for other forms of bike lane markings.
  - b. T-19 ACCESSIBLE PEDESTRIAN SIGNAL SYSTEM, revise “1B pole with cap” callout to “type 2 post”.

### Effect of Update:

1. This update will update City standards to align with Caltrans updates regarding bike lane marking material and pedestrian signal pole type.

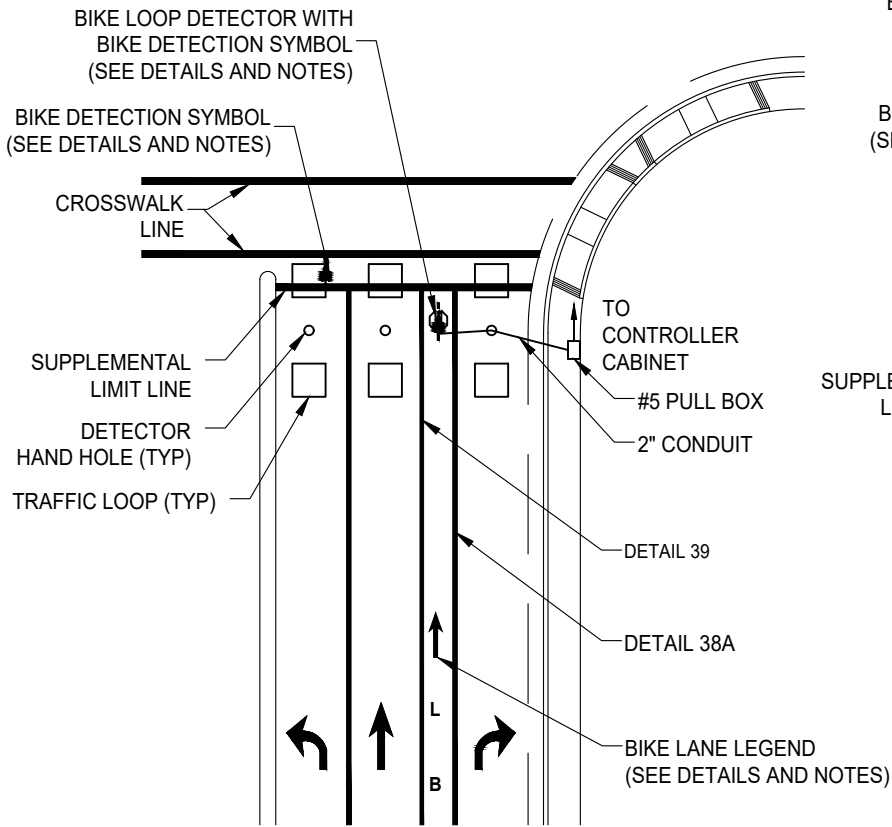
Request for Update Initiated By: Caltrans Sub-Committee

Update Reviewed for Conformity and Consistency to Standards:

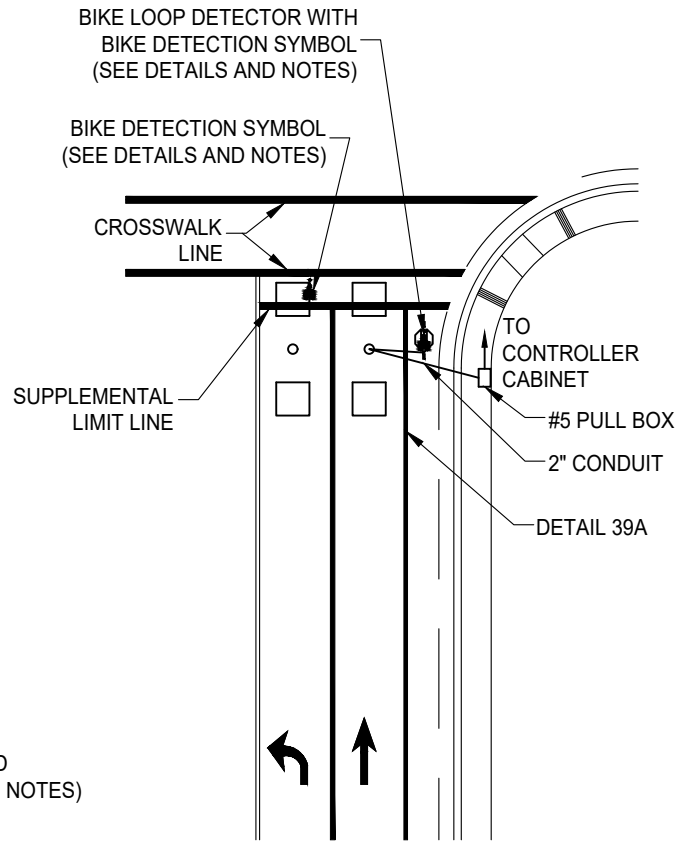
Shoaib Ahrary 11/14/2025 | 11:59 AM PST  
Shoaib Ahrary, PE, ESD Manager Date

Update to Standards Approved:

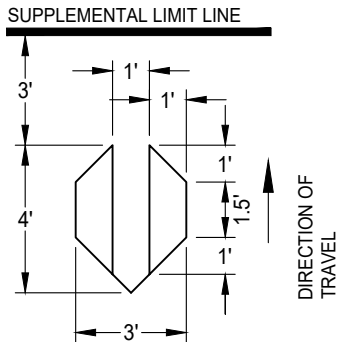
Kristin Parsons 11/14/2025 | 1:43 PM PST  
Kristin Parsons, PE, City Engineer Date



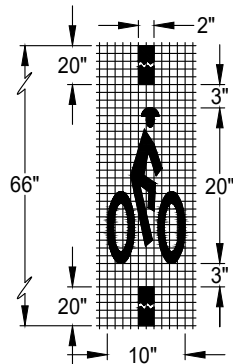
**BIKE LOOP INSTALLATION AT MAJOR INTERSECTION WITH RIGHT TURN LANE**



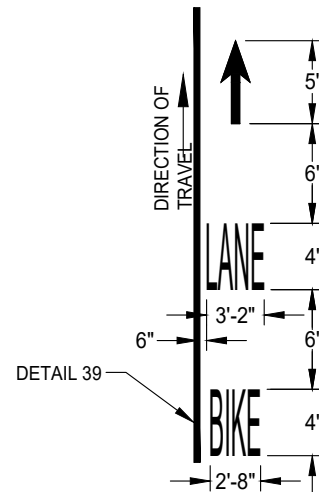
**BIKE LOOP INSTALLATION ADJACENT TO CURB AND GUTTER**



**BIKE LOOP DETECTOR DETAIL**  
NOT TO SCALE



**BIKE DETECTION SYMBOL DETAIL**  
NOT TO SCALE



**BIKE LANE LEGEND DETAIL**  
NOT TO SCALE

SEE THE CURRENT VERSION OF THE CALIFORNIA MUTCD FOR PAVEMENT MARKING, ARROW, AND LEGEND

**NOTES:**

- BIKE LOOP SHALL BE INSTALLED WITH CONDUIT, DETECTOR HANDHOLE (DH) AND DETECTOR LEAD IN CABLE (DLC) AND CONNECTED IN CONTROLLER WITH SEPARATE CHANNEL FOR OPERATION, UNLESS OTHERWISE NOTED ON THE PLANS.
- FOR BIKE LANE WITH LESS THAN 3 FEET IN WIDTH, MEASURING FROM BIKE LANE STRIPE AND LIP OF GUTTER, USE 3/4 SIZE OF BIKE LANE LEGEND.
- BIKE LANE LEGENDS, ARROWS, AND BIKE DETENTION SYMBOLS SHALL CONFORM TO STATE STANDARDS SPECIFICATIONS SECTION 84-2.02.
- BIKE DETECTION SYMBOL SHALL BE INSTALLED ON LOOP DETECTOR FOR LEFT TURN LANE, BIKE LANE AND OUTSIDE THROUGH LANE WHERE NO BIKE LANE IS PROPOSED. FOR DUAL LEFT TURN LANES, ONLY THE OUTSIDE LEFT TURN LANE SHALL BE INSTALLED WITH BIKE DETECTION SYMBOL. COORDINATE WITH SIGNAL CONTRACTOR AND CITY INSPECTOR FOR EXACT LOCATION OF DETECTION.


|                     |     |              |            |
|---------------------|-----|--------------|------------|
| DATE:<br>09/22/2007 |     | NOT TO SCALE |            |
| REVISION            | BY  | APPROVED     | DATE       |
| 1                   | SN  | SA           | 7-29-2021  |
| 2                   | SJB | SMA          | 11-14-2025 |
|                     |     |              |            |

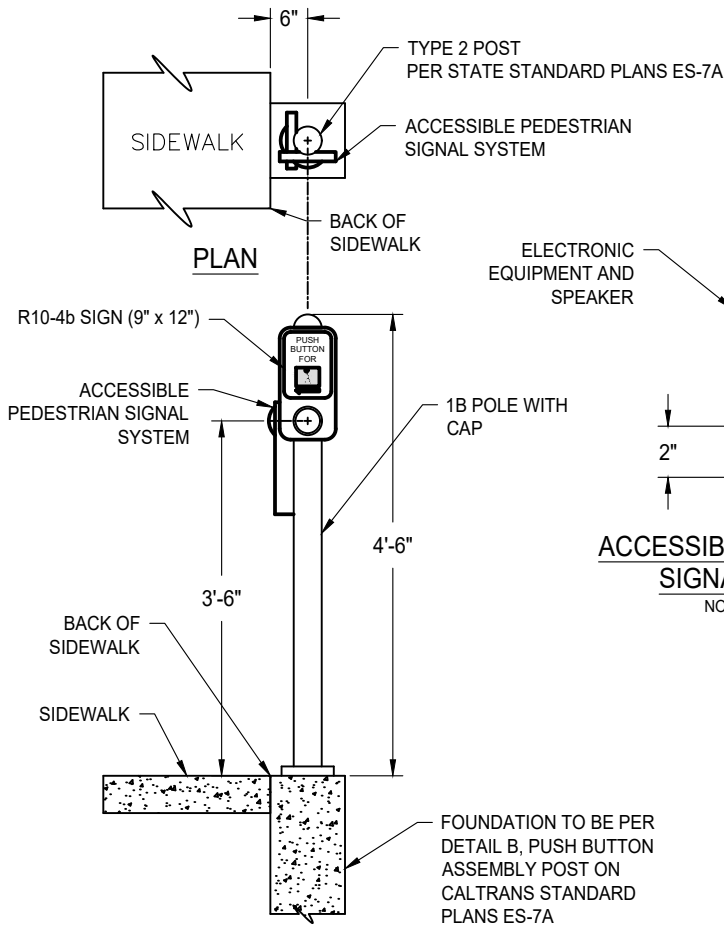
**CITY OF ELK GROVE - PUBLIC WORKS**

**BIKE LOOP AND BIKE LEGEND INSTALLATION DETAIL**

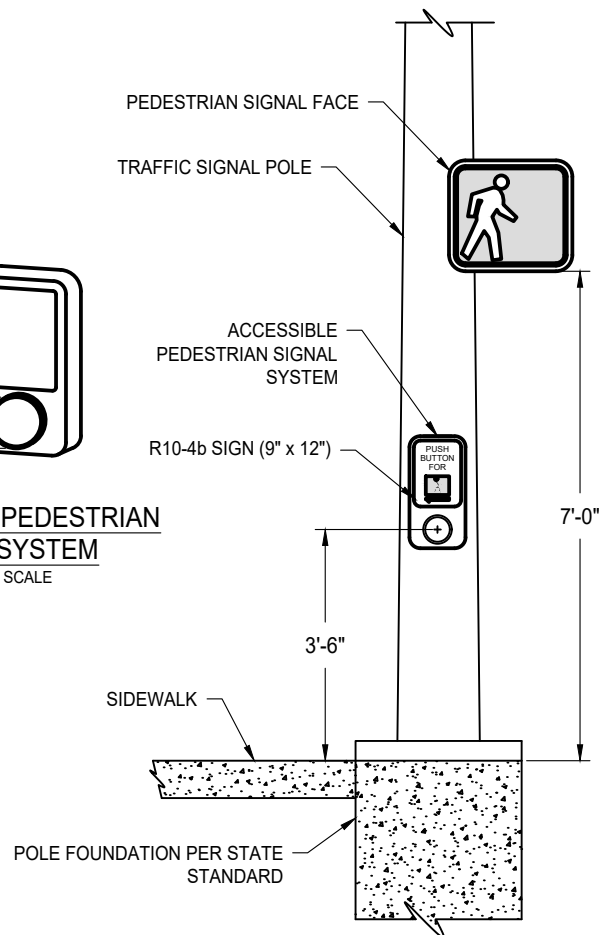
APPROVED BY: \_\_\_\_\_ 11-14-2025  
CITY ENGINEER DATE

DRAWING NUMBER  
**T - 7**





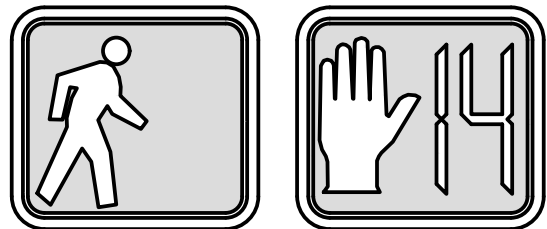
**ACCESSIBLE PEDESTRIAN SIGNAL POLE**  
NOT TO SCALE



**COMBINED TRAFFIC SIGNAL AND ACCESSIBLE PEDESTRIAN SIGNAL POLE**  
NOT TO SCALE

**NOTES:**

1. ACCESSIBLE PEDESTRIAN SIGNAL SYSTEM SHALL BE POLARA'S NAVIGATOR 2-WIRE SYSTEM OR APPROVED EQUIVALENT.
2. PEDESTRIAN SIGNS SHALL BE METAL AND SHALL CONFORM TO STANDARD SIGN NO. R10-4b (9" x 12") OF THE CALIFORNIA MUTCD.
3. PEDESTRIAN PUSH BUTTON HOUSING SHALL BE EITHER DIE-CAST OR PERMANENT MOLD CAST ALUMINUM.
4. ALL PEDESTRIAN SIGNAL HEADS SHALL BE THE "COUNTDOWN" VARIETY.
5. PEDESTRIAN HEADS SIGNAL DISPLAY SHALL BE LISTED ON THE AUTHORIZED MATERIALS LIST FOR TRAFFIC SIGNAL CABINETS AND COMPONENTS.



**PEDESTRIAN SIGNAL FACE**  
SYMBOL TYPE  
NOT TO SCALE

|                    |     |              |            |
|--------------------|-----|--------------|------------|
| DATE<br>09/22/2017 |     | NOT TO SCALE |            |
| REVISION           | BY  | APPROVED     | DATE       |
| 1                  | SJB | SMA          | 03-28-2024 |
| 2                  | SJB | SMA          | 11-14-2025 |
|                    |     |              |            |

**CITY OF ELK GROVE - PUBLIC WORKS**

---

**ACCESSIBLE PEDESTRIAN SIGNAL SYSTEM**

APPROVED BY: \_\_\_\_\_  
11-14-2025  
DATE

CITY ENGINEER \_\_\_\_\_

---

DRAWING NUMBER  
**T - 19**