

Phone: 916.683.7111
Fax: 916.627.4400

www.elkgrovecity.org

PUBLIC WORKS
8401 Laguna Palms Way
Elk Grove, California 95758



Standards Update Transmittal

Reference Number: 2024v-22
Standards: Standard Drawings, T-21.1, T-21.2, SL-46, and T-6A

Update:

1. Modification to Standard Drawings:
 - a. T-21.1 and T-21.2 TRAFFIC SIGNAL MAST ARM ASSEMBLY, Update notes, add City of Elk Grove logo to single-name and special double-name sign, identify new sign dimensions and materials.
 - b. SL-46, OLD TOWN ELECTROLIER (SERIES 'B'), Remove GFI Receptacle and identifying electrolier per project specs.
 - c. T-6A, STREET NAME SIGN GENERAL LOCATION, Update with North arrow that identifies locations of street signs accurately.

Effect of Update:

1. Clarifies standard drawings for traffic signal mast arm assembly, street sign location, and Old Town electrolier (Series 'B')

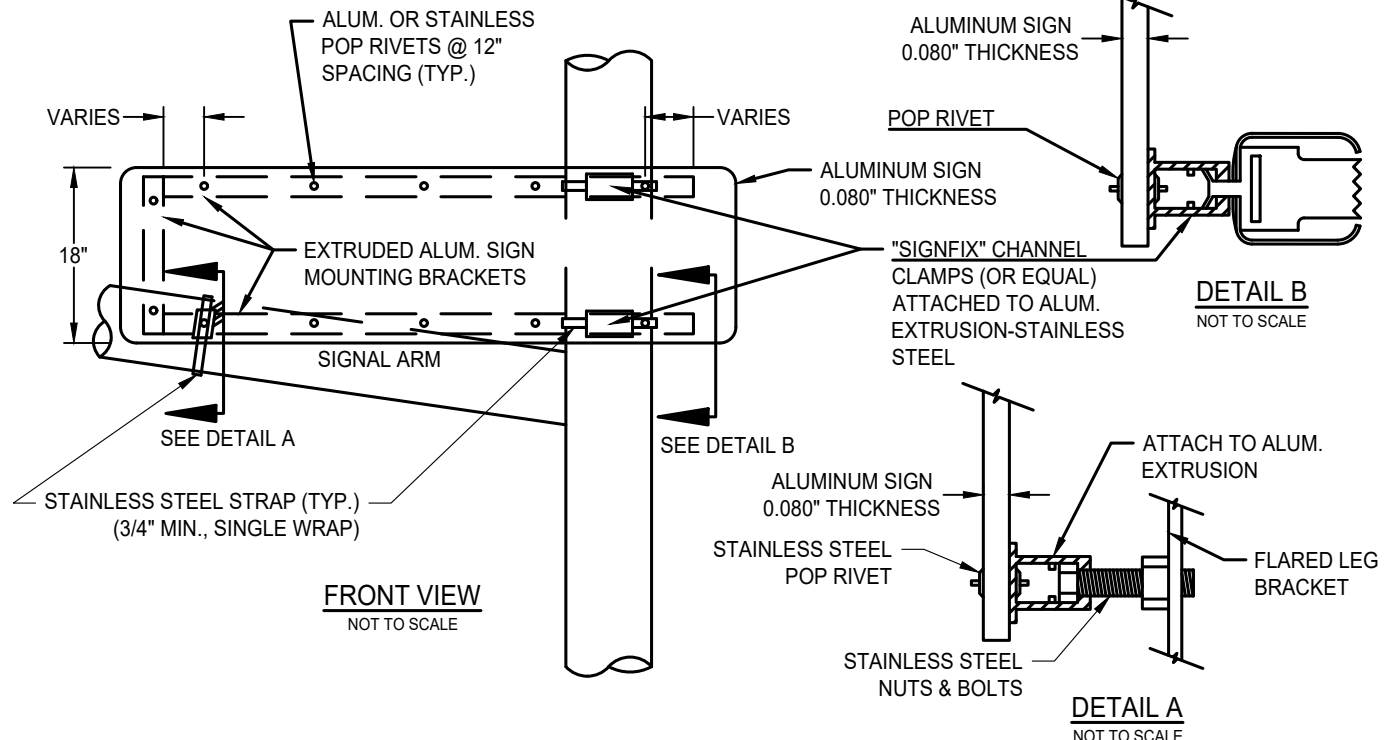
Request for Update Initiated By: Andrea Koerner 02/14/24

Update Reviewed for Conformity and Consistency to Standards:

Shoaib Ahrary 11/14/2025 | 11:37 AM PST
Shoaib Ahrary, PE, ESD Manager Date

Update to Standards Approved:

Kristin Parsons 11/14/2025 | 1:41 PM PST
Kristin J. Parsons, PE, City Engineer Date



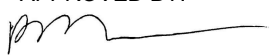
* IN THE EVENT THE STREET NAME INCLUDES A LOWER CASE LETTER g, j, p,q, or y, THE TOP AND BOTTOM BUFFER DISTANCES SHALL BE ADJUSTED TO 2.25" and 5.75", RESPECTIVELY.

DATE 6/21/2021		NOT TO SCALE	
REVISION	BY	APPROVED	DATE
1	SJB	SMA	02-23-2024
2	SJB	SMA	11-14-2025

CITY OF ELK GROVE - PUBLIC WORKS

**TRAFFIC SIGNAL MAST ARM
SIGN ASSEMBLY (1 OF 2)**


APPROVED BY:

 11-14-2025

CITY ENGINEER DATE

DRAWING NUMBER

T - 21.1



NOTES FOR TRAFFIC-SIGNAL-ARM SIGN MOUNTING:

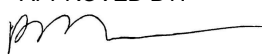

1. ALL MATERIAL FURNISHED SHALL BE RUST RESISTANT. ALL SIGN HARDWARE SHALL BE ALUMINUM AND ANY MOVING PARTS MUST BE MADE OF STAINLESS STEEL TO PREVENT RUSTING.

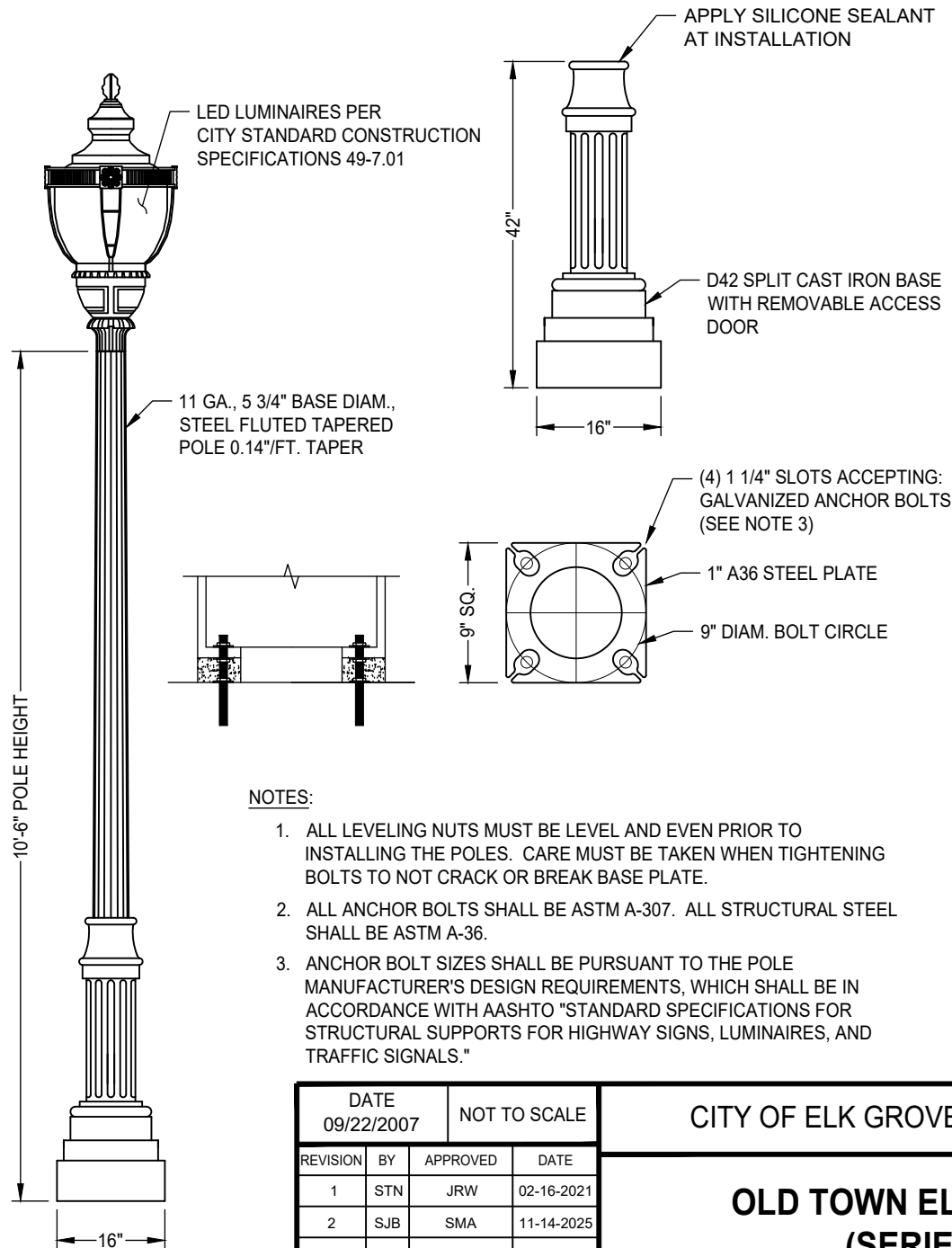
2. THE SIGN MOUNTING EXTRUDED ALUMINUM MOUNTING BRACKETS SHALL BE EITHER MEDIUM ALUMINUM EXTRUSIONS (SIGNFIX PART NO. SX-073) OR LARGER ALUMINUM EXTRUSIONS (SIGNFIX PART NO. SX-0130). EXTRUDED ALUMINUM MOUNTING BRACKETS MUST BE BY SIGNFIX OR MUST BE DIRECTLY ADAPTABLE TO UNIVERSAL SIGNFIX CHANNEL CLAMPS E.P. (PART NO. SX-0220) OR EQUAL. FLARED LEG MOUNTING BRACKET FOR MOUNTING TO POLE OR MAST ARM SHALL BE BAND-IT C206R9 3/4-INCH 2250 LB TENSION CAPACITY OR APPROVED EQUAL. 1 3/4-INCH THREADED ALUMINUM T-BOLT TO ATTACH SIGN TO FLARED LEG BRACKET SHALL BE MD SOLUTIONS PART #PC:B-TB3813 4-AL OR APPROVED EQUAL.

3. SINGLE STREET NAME SIGN SHALL HAVE NAME AND SUFFIX CENTERED IN SIGN. CITY OF ELK GROVE LOGO IS 16.4 INCHES IN LENGTH BY 12 INCHES IN HEIGHT AND SPACED 5-INCHES FROM THE LEFT EDGE AND CENTERED VERTICALLY. SIGNS SHALL BE SINGLE FACE AND FABRICATED ON ALUMINUM BLANKS 0.080-INCH THICKNESS. BLANK SHALL BE 18-INCHES IN HEIGHT AND VARY IN LENGTH DEPENDING ON THE NUMBER OF LETTERS OF THE STREET (MIN. OF 6- FEET IN LENGTH). SIGN BLANK SHALL HAVE GREEN ELECTRO CUT FILM (EC) OVER 3M DIAMOND GRADE REFLECTIVE VINYL SHEETING. UPPER CASE LETTERS SHALL BE 10-INCHES AND LOWER CASE LETTERS SHALL BE 7.5-INCHES. ALL LETTERS SHALL BE HIGHWAY FONT "D". SIGN SHALL HAVE 1-INCH WHITE BORDER COVERING THE ENTIRE EDGE OF SIGN BLANK. CORNERS SHALL BE NEATLY ROUNDED TO A 3-INCH RADIUS. THERE SHALL BE 5-INCHES SPACING BETWEEN BORDER AND SIDES OF STREET NAME. LETTERS SHALL BE SPACED A MINIMUM OF 1 1/2-INCHES.

4. VARIOUS STREETS IN THE CITY CHANGE NAMES AT MAJOR INTERSECTIONS. SIGNS THAT DESIGNATE DIFFERENT NAMES SHALL BE MADE AS PER STANDARD DRAWING NO. T-21.1, PAGE 1.

5. ALL SIGNS SHALL BE APPROVED FOR CONFORMANCE BY THE CITY OPERATION AND MAINTENANCE STAFF PRIOR TO INSTALLATION. TO SCHEDULE AN INSPECTION PLEASE CALL (916) 687-3005.

DATE 6/21/2021		NOT TO SCALE		CITY OF ELK GROVE - PUBLIC WORKS		APPROVED BY:  CITY ENGINEER		11-14-2025 DATE
REVISION	BY	APPROVED	DATE	TRAFFIC SIGNAL MAST ARM SIGN ASSEMBLY (2 OF 2)				DRAWING NUMBER T - 21.2
1	SJB	SMA	02-23-2024					
1	SJB	SMA	11-14-2025					
								



APPLICATION:

BUSINESS DISTRICT OLD TOWN

SPECIFICATIONS:

POST DESCRIPTION

THE OLD TOWN LIGHTING POST SHALL BE ALL STEEL CONSTRUCTION WITH A FLUTED BASE DESIGN. THE SHAFT SHALL BE FLUTED AND TAPERED WITH A 5 3/4" BASE DIAMETER. THE POST SHALL BE SHIPPED WITH FINISH NOTED BELOW.

MATERIALS

THE BASE AND POLE SHALL BE CAST STEEL. THE BASE AND POLE SHALL BE PRIME PAINTED INSIDE AND OUT WITH RUST INHIBITING, EPOXY BASED PAINT, PAINTED OUTSIDE WITH URETHANE GLOSS ENAMEL OF FEDERAL COLOR STANDARD 595B, COLOR #17083 "GLOSS BLACK", AND FINISHED WITH A CLEAR COAT OF URETHANE GLOSS FINISH. ANCHOR BOLTS AND NUTS SHALL BE HOT DIPPED GALVANIZED STEEL.

CONSTRUCTION

THE SHAFT AND BASE SHALL BE CAST IN ONE PIECE OR SHALL BE DOUBLE WELDED (TOP AND BOTTOM OF BASE). WELDS SHALL BE GROUND SMOOTH. WELDS SHALL CONFORM TO AWS D1.1. POLE AND BASE SHALL BE SHIPPED AS ONE PIECE.

DIMENSIONS

THE POST SHALL BE 10' 6" IN HEIGHT WITH AN 11.5" DIAMETER BASE. THE SHAFT SHALL BE TAPERED WITH A 5 3/4" BASE DIAMETER. AT THE TOP OF THE POST, AN INTEGRAL 2 7/8" X3" TENON SHALL BE PROVIDED FOR LUMINAIRE MOUNTING.

INSTALLATION

THE POST SHALL BE PROVIDED WITH FOUR, HOT DIP GALVANIZED L-TYPE ANCHOR BOLTS TO BE INSTALLED AS SHOWN IN THE BASE DETAIL. AN ACCESS DOOR SHALL BE PROVIDED IN THE BASE FOR ANCHORAGE AND WIRING ACCESS. A GROUNDING SCREW (5/8") SHALL BE PROVIDED INSIDE THE BASE OPPOSITE THE DOOR.

PRODUCT

VISCO V1-D42-F, ELK GROVE 3A

NOTES:

1. ALL LEVELING NUTS MUST BE LEVEL AND EVEN PRIOR TO INSTALLING THE POLES. CARE MUST BE TAKEN WHEN TIGHTENING BOLTS TO NOT CRACK OR BREAK BASE PLATE.
2. ALL ANCHOR BOLTS SHALL BE ASTM A-307. ALL STRUCTURAL STEEL SHALL BE ASTM A-36.
3. ANCHOR BOLT SIZES SHALL BE PURSUANT TO THE POLE MANUFACTURER'S DESIGN REQUIREMENTS, WHICH SHALL BE IN ACCORDANCE WITH AASHTO "STANDARD SPECIFICATIONS FOR STRUCTURAL SUPPORTS FOR HIGHWAY SIGNS, LUMINAIRES, AND TRAFFIC SIGNALS."

DATE 09/22/2007		NOT TO SCALE	
REVISION	BY	APPROVED	DATE
1	STN	JRW	02-16-2021
2	SJB	SMA	11-14-2025

CITY OF ELK GROVE - PUBLIC WORKS

**OLD TOWN ELECTROLIER
(SERIES 'B')**

APPROVED BY:

[Signature] 11-14-2025

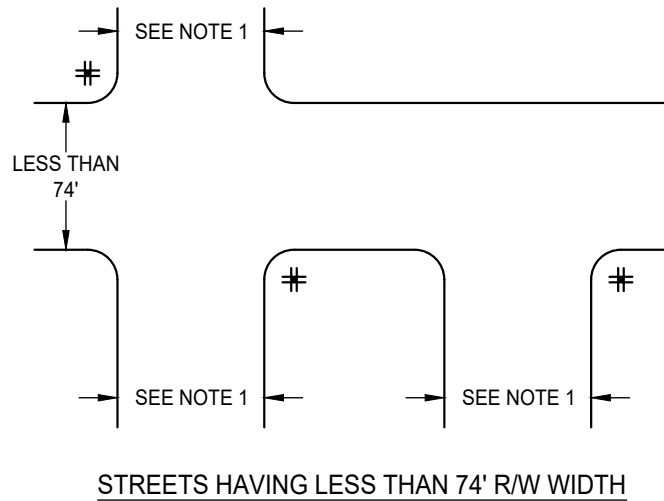
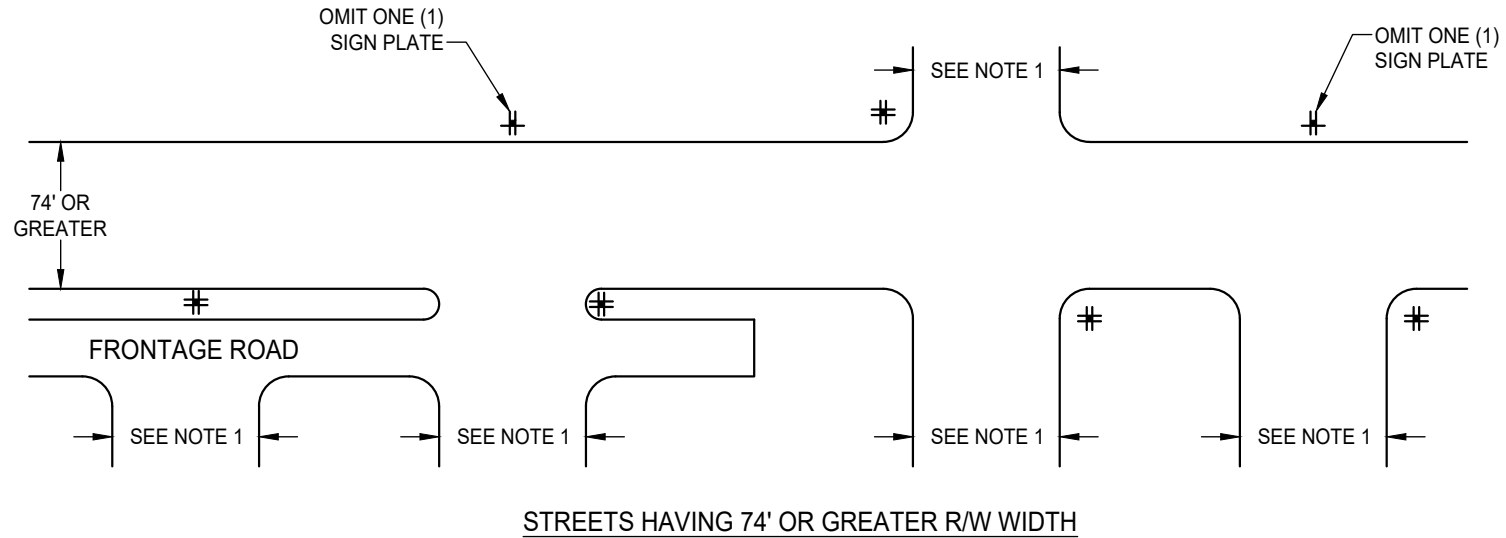
CITY ENGINEER

DATE



DRAWING NUMBER

SL - 46



NOTES:

1. SIDE STREETS INDICATED ARE STREETS WITH R/W WIDTHS EQUAL TO OR LESS THAN R/W WIDTH FOR THROUGH STREET
2. STREET SIGNS ARE TO BE LOCATED AT MID-RETURN APPROXIMATELY 30 INCHES BEHIND THE FACE OF CURB OR 6" BEHIND ATTACHED SIDEWALKS. SEE STANDARD DRAWING T-1 WHEN COMBINED WITH A STOP SIGN.
3. SIGNS SHALL BE INSTALLED ON NORTHWEST AND SOUTHEAST CORNERS OF INTERSECTIONS. SIGNS SHALL BE INSTALLED ON STREET LIGHTING STANDARD WHEN APPROPRIATE AND AS APPROVED BY CITY.
4. CITY TO REVIEW AND APPROVE SIGN LOCATIONS PRIOR TO INSTALLATION.
5. SEE STANDARD DRAWINGS T-1, T-3, T-4, T-5A, T-5B, AND T-6B.

LEGEND:

STANDARD STREET NAME SIGN INSTALLATION. FOUR (4) SIGN PLATES ON POST OR ON STREET LIGHT POLE.

THREE (3) SIGN PLATES ON POST OR ON STREET LIGHT POLE.

DATE 09/22/2007		NOT TO SCALE	
REVISION	BY	APPROVED	DATE
1	STN	JRW	02-16-2021
2	SJB	SMA	03-07-2025
3	SJB	SMA	10-27-2025

CITY OF ELK GROVE - PUBLIC WORKS

STREET NAME SIGN GENERAL LOCATION

APPROVED BY:

[Signature] 11-14-2025

CITY ENGINEER

DATE



DRAWING NUMBER

T - 6A