

Phone: 916.683.7111
Fax: 916.627.4400

www.elkgrovecity.org

PUBLIC WORKS
8401 Laguna Palms Way
Elk Grove, California 95758



Standards Update Transmittal

Reference Number: 2024v-18
Standards: Standard Drawing ST-30, L-20, L-28, L-29 and SCS 27-3.

Update:

1. Modification to Standard Drawing(s):
 - a. ST-30, L-20, L-28, and L-29 to specify dimensions and correct linework.
 - b. Correct ST-34 drawing name in table of contents.
2. Modification to Standard Construction Specifications(s):
 - a. 27-3, Correct dimensions for concrete joints.

Effect of Update:

1. This update will better define the above standard drawings and specifications.

Request for Update Initiated By: Standards Review Committee

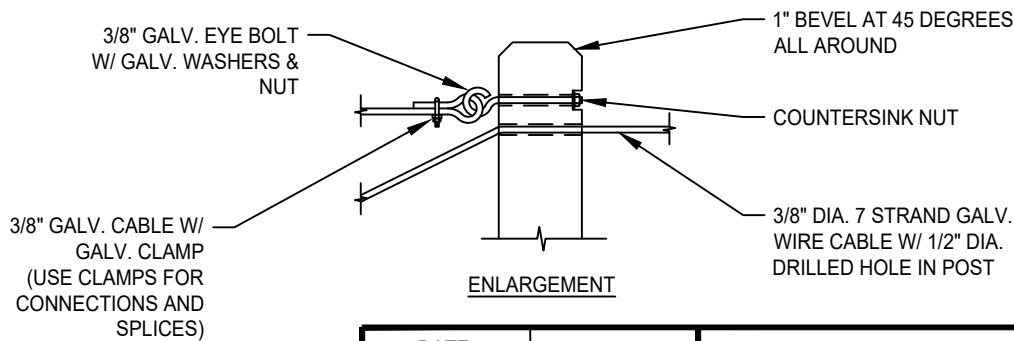
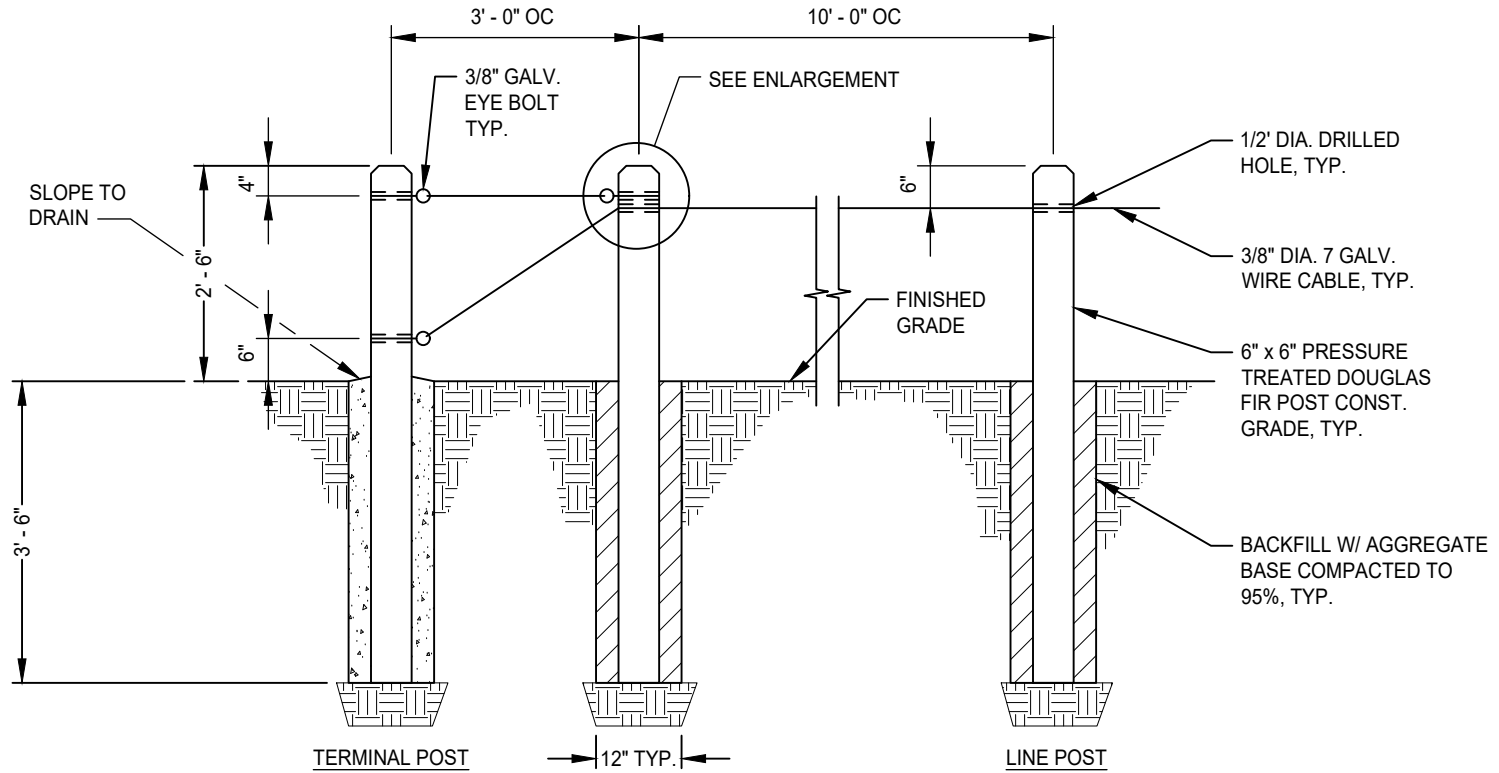
Update Reviewed for Conformity and Consistency to Standards:

Shoaib Ahrary 6/19/2025 | 5:56 PM PDT
Shoaib Ahrary, PE, ESD Manager Date

Update to Standards Approved:

Kristin Parsons 6/20/2025 | 8:43 AM PDT
Kristin Parsons, PE, City Engineer Date

ST-6A	Utility Pothole Repair
ST-7	General Notes
ST-8	Typical Trench Compaction Detail
ST-8A	Manhole Backfill Detail
ST-9	Temporary Trench Resurfacing
ST-10	Trench Sections in Improved Area Horticulture, Lawn or Cultivated Areas
ST-11	Widening Details for Thoroughfares at Various Street Intersections
ST-12A	Widening Details for Arterials at Major Street Intersections
ST-12B	Widening Details for Arterials at Collector Street Intersections
ST-13	Typical Striping for Collector Streets with Bicycle Lanes at Intersections with Thoroughfare or Arterial Streets
ST-14A	Typical Striping for Arterial Intersections with Thoroughfares or Arterials
ST-14B	Typical Striping for Arterial Intersections with Collectors
ST-15A	Typical Striping for Thoroughfare Intersections with Thoroughfares or Arterials
ST-15B	Typical Striping for Thoroughfare Intersections with Collectors
ST-16	Typical Raised Island Designs for Limiting Access
ST-17	Typical Sections Streets Classes "A", "B", & "C"
ST-17A	Typical Sections Interim Improvements for Special Thoroughfare and Thoroughfare Streets with Rolled-In Rumble Strips
ST-17B	Rolled-In Rumble Strips for Interim Roadway Improvements
ST-17C	Rolled-In Rumble Strips for Interim Roadway Improvements
ST-17D	Typical Sections Interim Improvements for Special Thoroughfare and Thoroughfare Streets with Rolled-In Rumble Strips
ST-18	Class "C" Street Intersection
ST-19	Typical Street Sections at Residential Driveways
ST-20	Commercial Driveways Type A-6
ST-21B	Sidewalk Ramp for A-7 Driveways Without Additional R/W (Not for New Construction)
ST-22	Driveway Location Standards
ST-23	Cul-De-Sac
ST-24	Bulb-Out Detail
ST-25	90 Degree Intersection Elbow
ST-26.1	Minimum Sight Distance at Intersections and Non-Residential Driveways
ST-26.2	Visibility Requirements, City of Elk Grove
ST-27	Bus Turnouts
ST-28	Bus Stop Details
ST-30	A.C. Conforms to New Sidewalk Ramp Re-Construction
ST-31	Typical Curb and Gutter Sections
ST-32	Cross Gutter
ST-33	Barrier Curb Detail
ST-34	Under Sidewalk Drain



NOTES:

1. CONCRETE FOOTING SHALL BE INSTALLED AT ALL TERMINAL POSTS AND AT ALL BENDS.

DATE: 09/22/2007		NOT TO SCALE	
REVISION	BY	APPROVED	DATE
1	SJB	SMA	06-18-2025

CITY OF ELK GROVE - PUBLIC WORKS


POST AND CABLE FENCING

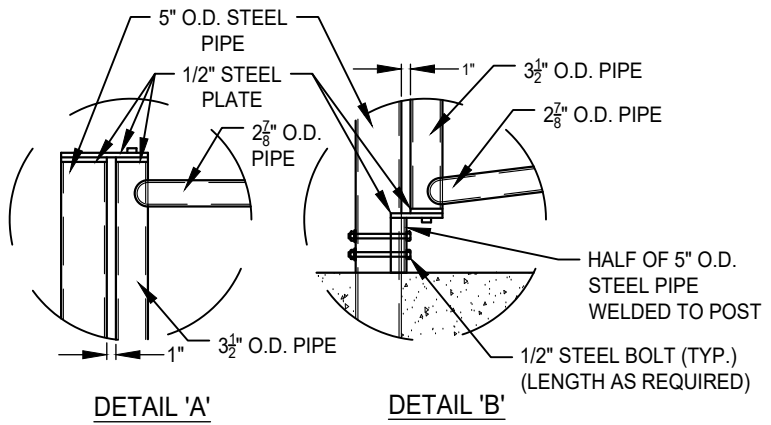
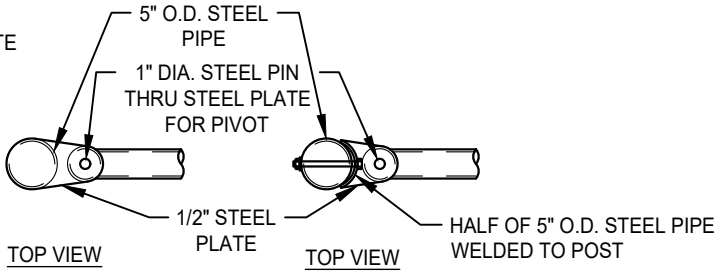
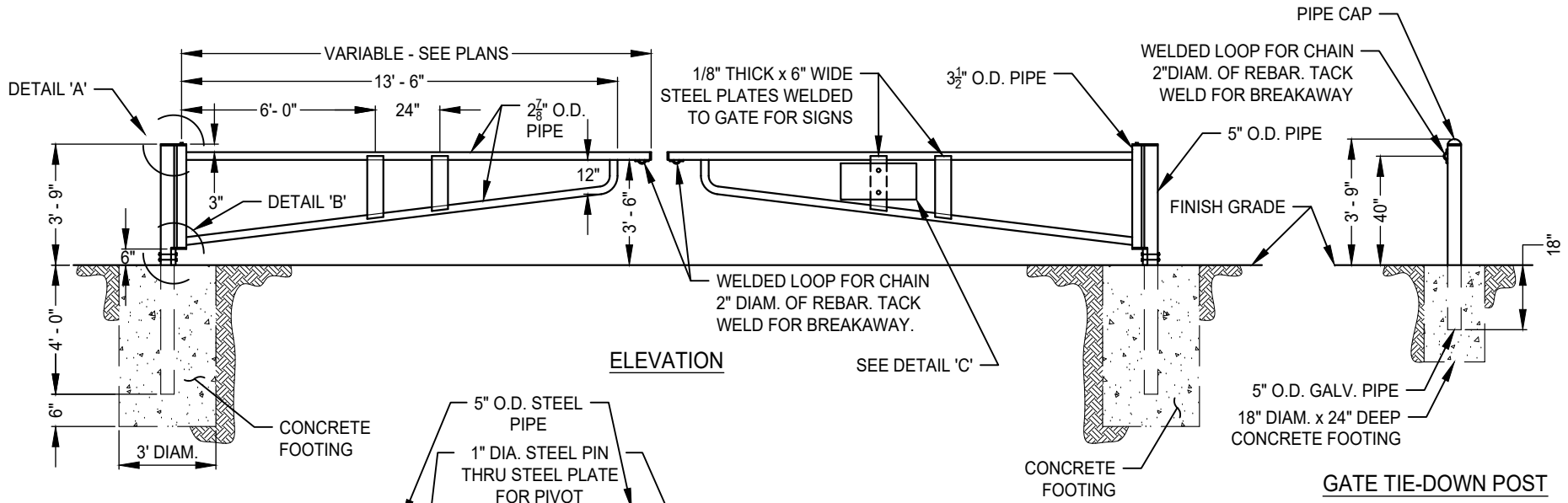
APPROVED BY: _____

CITY ENGINEER DATE

DRAWING NUMBER

L - 20





- NOTES:**
1. DOUBLE PIPE GATES SHALL BE USED FOR ROADWAYS OR DRIVEWAYS OVER 24' WIDE OPENING.
 2. ALL PIPES SHALL BE BLACK STEEL PIPES. OUTSIDE DIAMETER (O.D.) AND WELDED.
 3. ALL STEEL TO BE PAINTED WITH 2 COATS OF PRIMER AND SAFETY YELLOW.
 4. PROVIDE TWO (2) 5" O.D. PIPES AND INSTALL WITH CONCRETE FOOTING (18" x 24" D) FOR TIE-DOWN WHEN GATE IS OPENED.
 5. DETAIL 'C' SHALL BE AFFIXED TO PIPE GATE USING (2) THROUGH BOLTS.

PROPERTY OF THE CITY OF ELK GROVE
 NO TRESPASSING, DUMPING, OR ABANDONING OF VEHICLES
 AUTHORIZED PERSONNEL ONLY
 VIOLATORS WILL BE PROSECUTED
 CA PENAL CODE SEC. 602 AND 374.3
 CA VEHICLE CODE 22523 AND 22659

DETAIL 'C'

DATE: 09/22/2007		NOT TO SCALE	
REVISION	BY	APPROVED	DATE
1	SJB	SMA	04-12-2024
2	SJB	SMA	06-18-2025

CITY OF ELK GROVE - PUBLIC WORKS

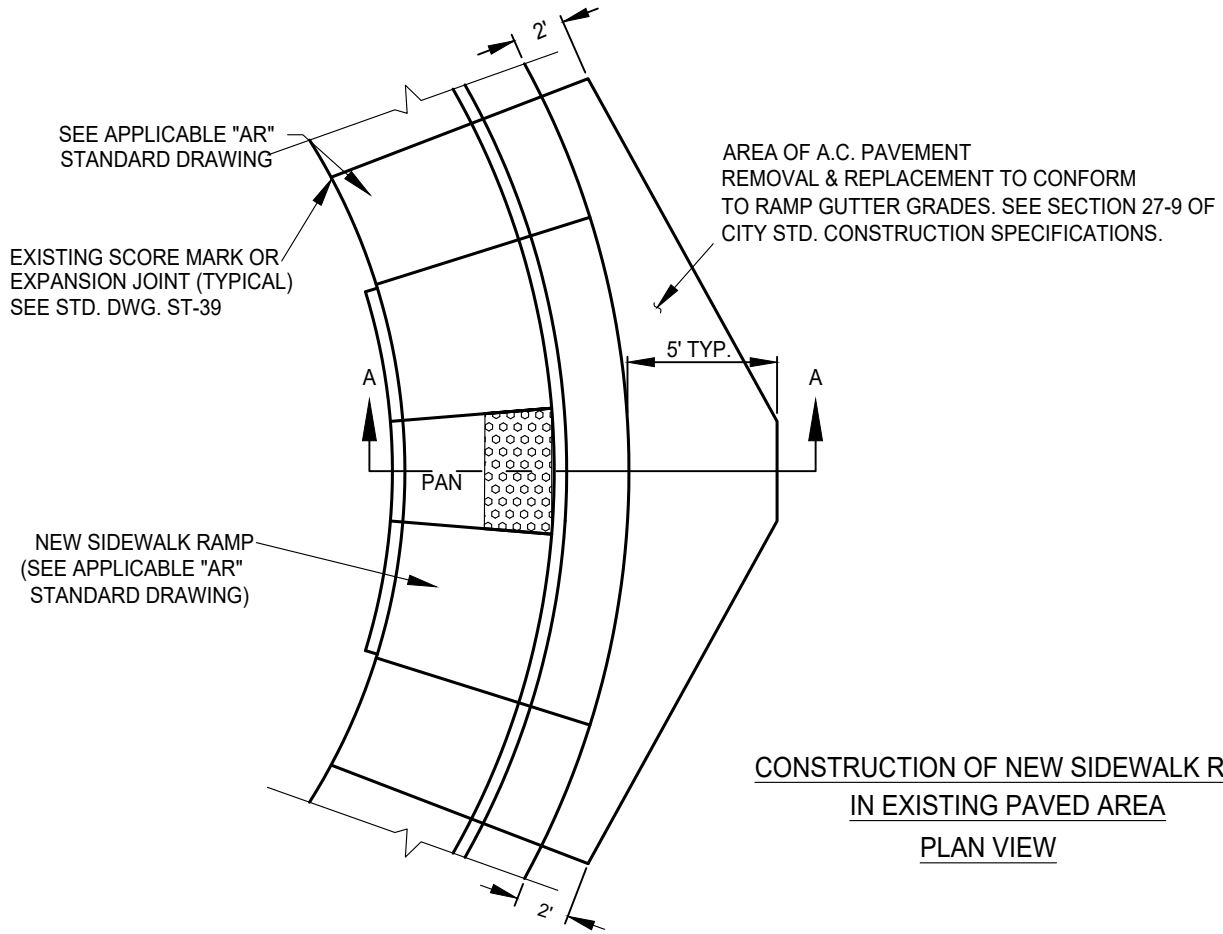
DOUBLE PIPE GATE

APPROVED BY: _____
 CITY ENGINEER DATE

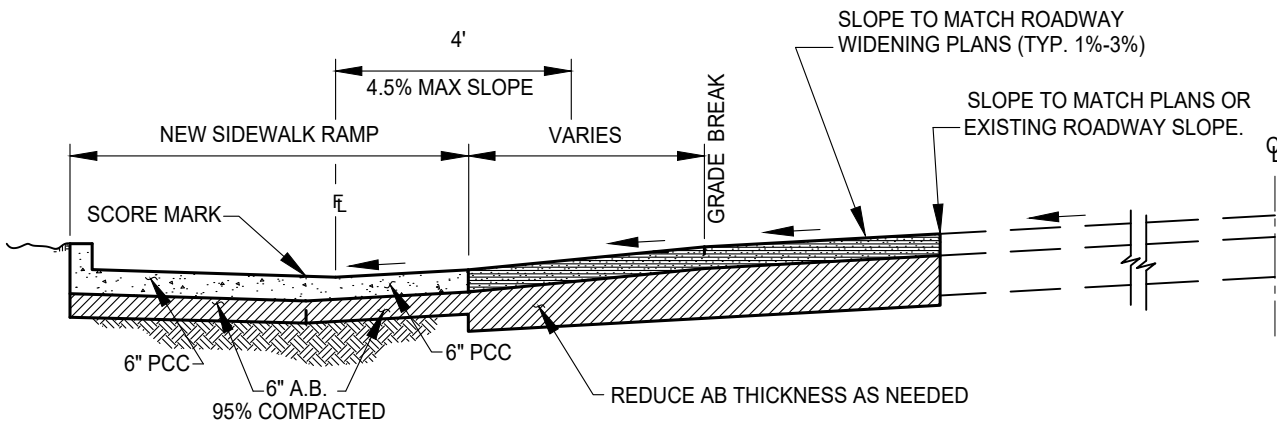


DRAWING NUMBER

L - 28



**CONSTRUCTION OF NEW SIDEWALK RAMP
IN EXISTING PAVED AREA
PLAN VIEW**



**CONSTRUCTION OF NEW SIDEWALK RAMP
WITH PAVEMENT WIDENING
SECTION A - A**

DATE:		NOT TO SCALE	
REVISION	BY	APPROVED	DATE
1	SJB	SMA	03-27-2024
2	SJB	SMA	06-18-2025


CITY OF ELK GROVE - PUBLIC WORKS

A.C. CONFORMS TO NEW SIDEWALK RAMP RE-CONSTRUCTION

APPROVED BY: _____

CITY ENGINEER _____ DATE _____

DRAWING NUMBER
ST - 30



27-3 CONCRETE IN CURBS, GUTTERS, AND SIDEWALKS

Concrete in curbs, gutters, and sidewalks shall be six inches (6") thick, Class "B-2", as specified in Section 50-5, "Portland Cement Concrete", of these Specifications. Concrete being transported must maintain consistency and workability; no additional mixing water shall be incorporated unless authorized by the City.

Subgrade shall be prepared as specified in Section 18-2.05, "Subgrade Preparation", of these Specifications. A six-inch (6") compacted thick Class 2 aggregate base section shall be required under all curbs, gutters, and sidewalks. The requirement to excavate for and place the six-inch (6") thick Class II aggregate base section shall apply to both construction of new curbs, gutters, and sidewalks, and to the replacement of existing curbs, gutters, and sidewalks.

Before placing concrete, the subgrade shall be well dampened. A joint shall be constructed at the end of concrete placement, each day, or whenever the concrete placement work is terminated. The joint shall be vertical and square ended, and shall be placed at the point of an expansion joint, as defined in the following Section (27-3.01) and shall be dowelled into the existing concrete three-inches (3") and half the depth of concrete below the surface.