



Phone: 916.683.7111  
Fax: 916.691.3168

Web: [www.elkgrovecity.org](http://www.elkgrovecity.org)

8401 Laguna Palms Way  
Elk Grove, California 95758

## Standards Update Transmittal

Reference Number: **2024v-17**  
Standards: **Standard Construction Drawings SL-30, SL-31, SL-33.**

### Update:

1. Update drawing(s) to include fixture attachment to mast arm. Currently, the drawings do not specify what type of connection is needed between the fixture and mast arm pipe. Existing poles have a threaded connection which is failing and has become a chronic problem. The preferred option is a “quick stem mount”, which is available from Holophane. We can also accept an approved equal.
2. Drawing SL-31, note 2 indicates that all equipment shall conform to the City of Elk Grove approved equipment list. I suggest that we update the approved equipment list since it currently is not up to date.

### Effect of Update:

1. This update will help to eliminate fixture failure and will provide direction to contractors regarding required equipment.
2. This update will bring the approved equipment list to current standards.

Request for Update Initiated By:

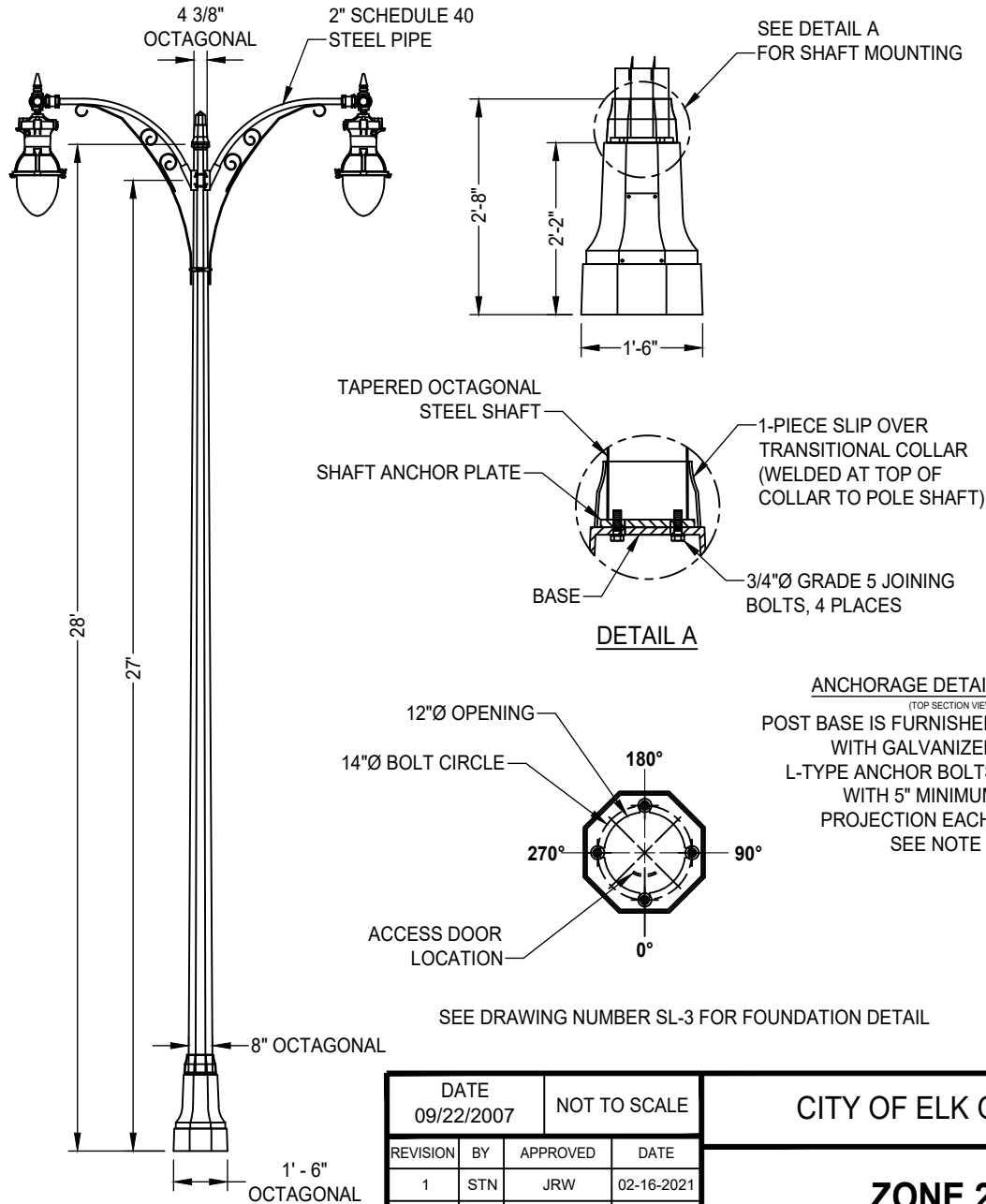
Ron Faulk 6/4/2024  
Ron Faulk, Operations Supervisor Date

Update Reviewed for Conformity and Consistency to Standards:

Shoaib Ahrary 6/19/2025 | 5:54 PM PDT  
Shoaib Ahrary, PE, Senior Civil Engineer Date

Update to Standards Approved:

Kristin Parsons 6/20/2025 | 8:44 AM PDT  
Kristin Parsons, PE, City Engineer Date



**APPLICATION:**

WIDE MEDIANS ON ARTERIALS AND THOROUGHFARES

**SPECIFICATIONS:**

**POST BASE**

THE BASE SHALL BE CAST IRON CONSTRUCTION WITH A TAPERED AND STEPPED OCTAGONAL PATTERN. A 1-PIECE SLIP OVER TRANSITION COLLAR COVERS THE BASE OF THE SHAFT. A DOOR IS LOCATED IN THE BASE FOR ANCHORAGE AND WIRING ACCESS. A GROUND SCREW (5/8") SHALL BE PROVIDED INSIDE THE BASE, OPPOSITE THE ACCESS DOOR.

**POST SHAFT**

THE POST SHAFT SHALL BE 11-GAUGE STEEL WITH A STEEL PLATE FOR MOUNTING TO THE BASE. THE OCTAGONAL SHAFT TAPERS FROM 8" (FLAT TO FLAT) AT THE BOTTOM TO 4-3/8" AT THE TOP, WITH A DECORATIVE OCTAGONAL FINIAL.

**CROSSARM**

THE CLAMP ON CROSSARM SHALL BE STEEL PIPE CONSTRUCTION WITH FLAT BAR SCROLLS AND 1-1/2" X 1/2" FLAT BAR CLAMP-ON BRACE. A SLEEVE GASKET SHALL BE INSTALLED TO PREVENT ARM MOVEMENT. ARMS SHALL HAVE A 2" PIPE SLEEVE FOR LUMINAIRE MOUNTING. THE CROSSARM MEASURES 52" FROM POST TO LUMINAIRE CENTERS. A LUMINAIRE LEVELING FITTER SHALL BE MOUNTED TO THE END OF THE PIPE ARM FOR LUMINAIRE MOUNTING. FIXTURE MOUNT TO CROSSARM SHALL BE HOLOPHANE WEST LIBERTY STYLE, QSM, OR EQUIVALENT. THREADED FIXTURE MOUNTS SHALL NOT BE ALLOWED.

**FINISH**

THE POST SHALL BE SHIPPED FINISHED WITH A STANDARD BLACK POWDER COAT FINISH.

**NOTES:**

1. ALL HARDWARE STAINLESS STEEL. ALL EXTERIOR HARDWARE TAMPER RESISTANT. BASE AND SHAFT TO BE SHIPPED AS A ONE-PIECE UNIT.
2. POLES AND LIGHTING EQUIPMENT SHALL CONFORM TO CITY OF ELK GROVE AUTHORIZED MATERIALS LIST
3. ANCHOR BOLT SIZES SHALL BE PURSUANT TO THE POLE MANUFACTURER'S DESIGN REQUIREMENTS, WHICH SHALL BE IN ACCORDANCE WITH AASHTO "STANDARD SPECIFICATIONS FOR STRUCTURAL SUPPORTS FOR HIGHWAY SIGNS, LUMINAIRES, AND TRAFFIC SIGNALS."

DATE 09/22/2007		NOT TO SCALE	
REVISION	BY	APPROVED	DATE
1	STN	JRW	02-16-2021
2	SJB	SMA	06-18-2025

CITY OF ELK GROVE - PUBLIC WORKS

**ZONE 2 ELECTROLIER  
(DUAL ARM)**

APPROVED BY:

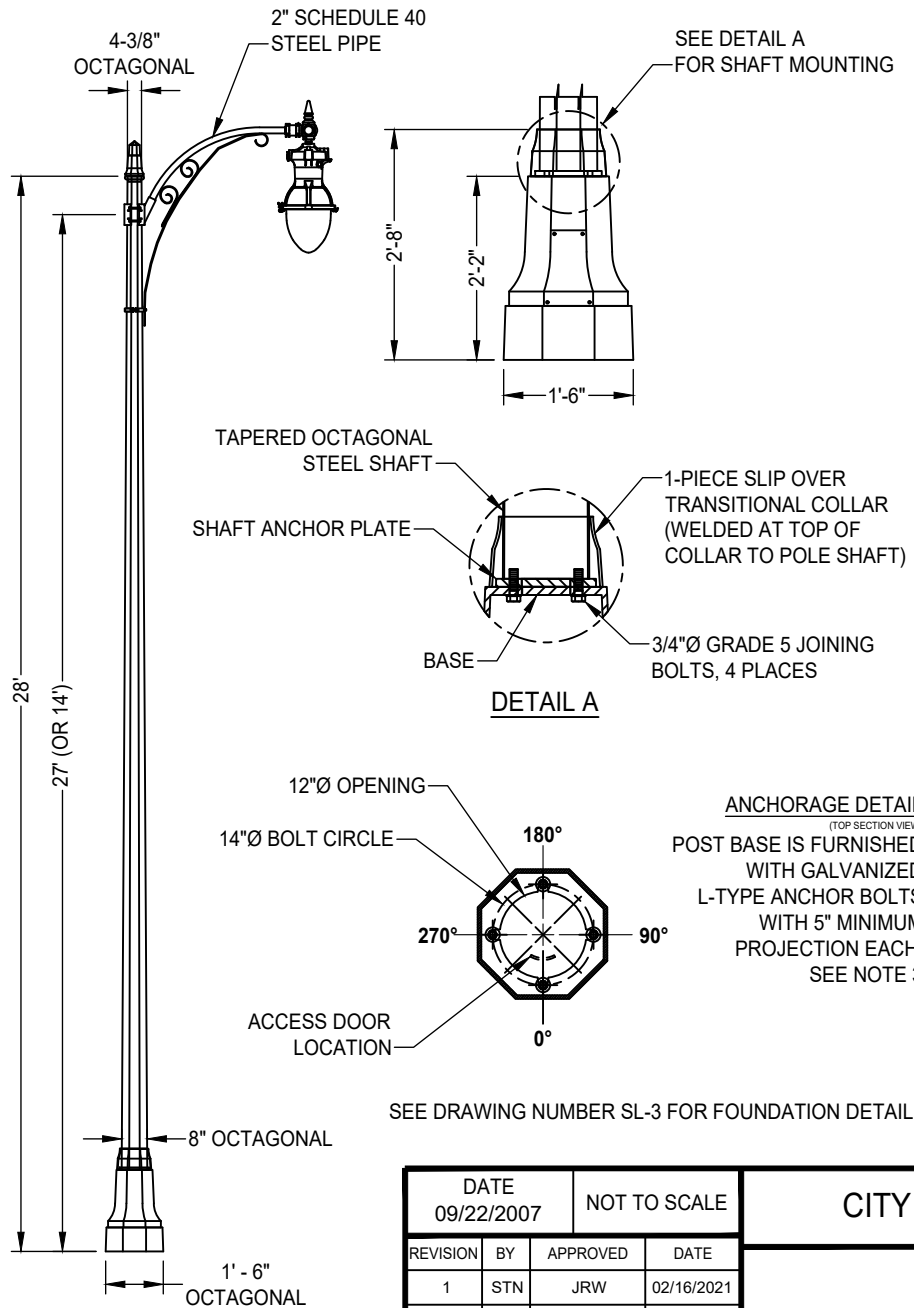
CITY ENGINEER

DATE



DRAWING NUMBER

**SL - 30**



**APPLICATION:**

ARTERIAL (REDUCED MEDIAN) AND COLLECTOR STREETS

**SPECIFICATIONS:**

**POST BASE**

THE BASE SHALL BE CAST IRON CONSTRUCTION WITH A TAPERED AND STEPPED OCTAGONAL PATTERN. A 1-PIECE SLIP OVER TRANSITION COLLAR COVERS THE BASE OF THE SHAFT. A DOOR IS LOCATED IN THE BASE FOR ANCHORAGE AND WIRING ACCESS. A GROUND SCREW (5/8") SHALL BE PROVIDED INSIDE THE BASE, OPPOSITE THE ACCESS DOOR.

**POST SHAFT**

THE POST SHAFT SHALL BE 11-GAUGE STEEL WITH A STEEL PLATE FOR MOUNTING TO THE BASE. THE OCTAGONAL SHAFT TAPERS FROM 8" (FLAT TO FLAT) AT THE BOTTOM TO 4-3/8" AT THE TOP, WITH A DECORATIVE OCTAGONAL FINIAL.

**CROSSARM**

THE CLAMP ON CROSSARM SHALL BE STEEL PIPE CONSTRUCTION WITH FLAT BAR SCROLLS AND 1-1/2" X 1/2" FLAT BAR CLAMP-ON BRACE. A SLEEVE GASKET SHALL BE INSTALLED TO PREVENT ARM MOVEMENT. ARMS SHALL HAVE A 2" PIPE SLEEVE FOR LUMINAIRE MOUNTING. THE CROSSARM MEASURES 52" FROM POST TO LUMINAIRE CENTERS. A LUMINAIRE LEVELING FITTER SHALL BE MOUNTED TO THE END OF THE PIPE ARM FOR LUMINAIRE MOUNTING. FIXTURE MOUNT TO CROSSARM SHALL BE HOLOPHANE WEST LIBERTY STYLE, QSM, OR EQUIVALENT. THREADED FIXTURE MOUNTS SHALL NOT BE ALLOWED.

**FINISH**

THE POST SHALL BE SHIPPED FINISHED WITH A STANDARD BLACK POWDER COAT FINISH.

**NOTES:**

1. ALL HARDWARE STAINLESS STEEL. ALL EXTERIOR HARDWARE TAMPER RESISTANT. BASE AND SHAFT TO BE SHIPPED AS A ONE-PIECE UNIT.
2. POLES AND LIGHTING EQUIPMENT SHALL BE LISTED ON THE AUTHORIZED MATERIALS LIST.
3. ANCHOR BOLT SIZES SHALL BE PURSUANT TO THE POLE MANUFACTURUR'S DESIGN REQUIREMENTS. WHICH SHALL BE IN ACCORDANCE WITH AASHTO "STANDARD SPECIFICATIONS FOR STRUCTURAL SUPPORTS FOR HIGHWAY SIGNS, LUMINAIRES, AND TRAFFIC SIGNALS."

DATE 09/22/2007		NOT TO SCALE	
REVISION	BY	APPROVED	DATE
1	STN	JRW	02/16/2021
2	SJB	SMA	06-18-2025

CITY OF ELK GROVE - PUBLIC WORKS

APPROVED BY:

CITY ENGINEER

DATE

**ZONE 2 ELECTROLIER  
(SERIES 'A')**



DRAWING NUMBER

**SL - 31**

