

Phone: 916.683.7111
Fax: 916.627.4400

www.elkgrovecity.org

PUBLIC WORKS
8401 Laguna Palms Way
Elk Grove, California 95758



Standards Update Transmittal

Reference Number: 2024v-06
Standards: Standard Drawings: SL-24, SL-25, SL-26, ST-11, ST-12A, ST-12B, ST-13, ST-14A, ST-14B, ST-15A, ST-15B, ST-17A, ST-22, T-6A, T-9A, T-9B

Update:

1. Modification to Standard Drawing(s):
 - a. SL-24, SL-25, SL-26, ST-11, ST-12A, ST-12B, ST-13, ST-14A, ST-14B, ST-15A, ST-15B, ST-17A, ST-22, T-6A, T-9A, T-9B
 - i. Revised drawings to reflect the street sections shown in Section 4-3, Street Design Standards of the City of Elk Grove Improvement Standards.

Effect of Update:

1. This modification will ensure that Section 4-3, Street Design Standards are consistent with Standard Drawings SL-24, SL-25, SL-26, ST-11, ST-12A, ST-12B, ST-13, ST-14A, ST-14B, ST-15A, ST-15B, ST-17A, ST-22, T-6A, T-9A, T-9B

Request for Update Initiated By: Development Services

Update Reviewed for Conformity and Consistency to Standards:

Shoaib Ahrary 3/7/2025 | 3:22 PM PST
Shoaib Ahrary, PE, ESD Manager Date

Update to Standards Approved:

Kristin Parsons 3/12/2025 | 9:45 AM PDT
Kristin Parsons, PE, City Engineer Date

STREET CLASSIFICATION	RIGHT - OF - WAY WIDTH	STREET LIGHT SUB-TYPE (SERIES)	STANDARD MOUNTING HEIGHT	MAXIMUM SPACING** (ONE SIDE ONLY)
MAJOR ARTERIAL	96'	A	30' - 9"	220'
MINOR ARTERIAL	74'	A	30' - 9"	220'
				MAXIMUM SPACING** (TWO-SIDES)
COLLECTOR	50'	B	21'	180'
PRIMARY RESIDENTIAL	40'	B	21'	200'
MINOR RESIDENTIAL	44'	B	21'	240'

NOTES:

1. WATTAGE AND MODEL NUMBER FOR LIGHT EMITTING DIODE (LED) LAMP SHALL BE SPECIFIED ON THE PLANS. EQUIPMENT SHALL CONFORM TO CITY OF ELK GROVE APPROVED EQUIPMENT LIST.
2. ILLUMINATION SHALL CONFORM TO STANDARD DRAWING SL-2.
3. SEE SECTION 5-8D OF THE CITY IMPROVEMENT STANDARDS, "SPACING," FOR DEFINITIONS OF ONE-SIDE AND TWO-SIDE SPACING.
- *4. SINGLE FAMILY AND DUPLEX FAMILY ZONING SHALL USE SERIES 'B' STREET LIGHT, 21' MOUNTING HEIGHT, AND 180' SPACING.
- **5. MAXIMUM SPACING MAY BE ADJUSTED AS LONG AS ILLUMINATION CRITERIA ARE MET WITH APPROVAL OF THE ENGINEER.


DATE 09/22/2017		NOT TO SCALE	
REVISION	BY	APPROVED	DATE
1	SJB	SMA	03-07-2025

CITY OF ELK GROVE - PUBLIC WORKS

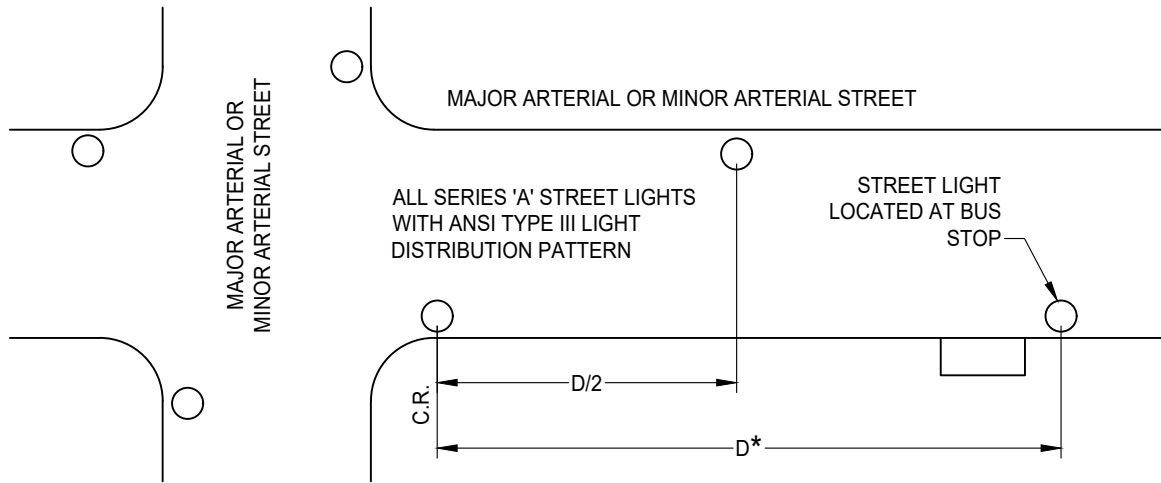
**COMMON TYPE STREET LIGHT POLE
SPACING GUIDE
(SERIES 'A' / SERIES 'B')**

APPROVED BY: _____ 03-12-2025
CITY ENGINEER DATE

DRAWING NUMBER
SL - 24



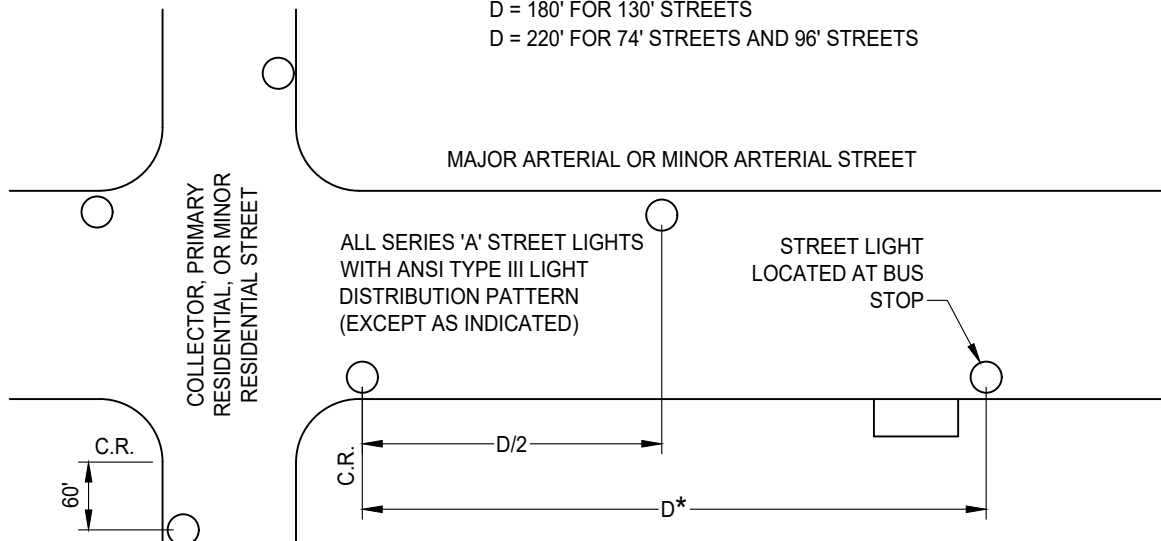
STREET LIGHT PLACEMENT ON MAJOR ARTERIAL AND MINOR ARTERIAL STREETS (96' AND 74' STREETS)



***SEE STANDARD DRAWING SL-24**

D = 180' FOR 130' STREETS

D = 220' FOR 74' STREETS AND 96' STREETS

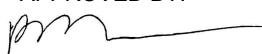


IN ACCORDANCE WITH STREET CLASSIFICATION,
SERIES 'A' OR SERIES 'B' STREET LIGHT WITH ANSI
TYPE III LIGHT DISTRIBUTION PATTERN.
(SEE STANDARD DRAWINGS SL-2 AND SL-24)

DATE 09/22/2017		NOT TO SCALE	
REVISION	BY	APPROVED	DATE
1	SJB	SMA	03-07-2025

CITY OF ELK GROVE - PUBLIC WORKS


**COMMON TYPE TYPICAL LOCATIONS
ARTERIAL STREETS
(SERIES 'A'/ SERIES 'B')**

APPROVED BY: 

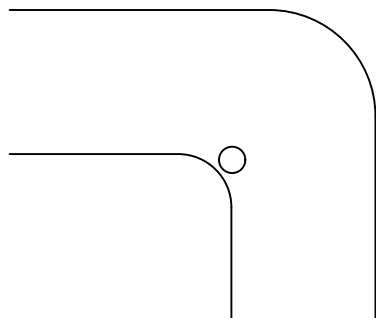
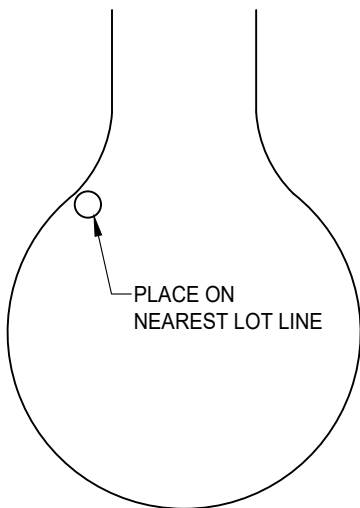
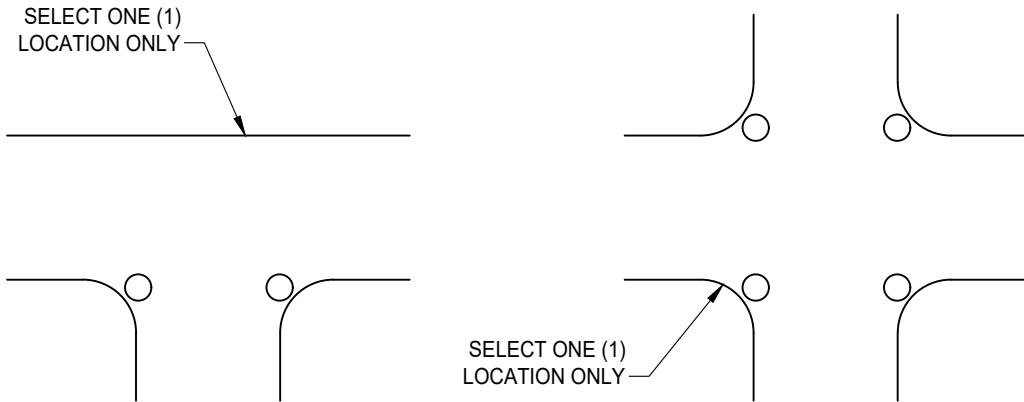
03-12-2025
DATE

CITY ENGINEER

DRAWING NUMBER
SL - 25



**STREET LIGHT PLACEMENT
ON COLLECTOR, PRIMARY RESIDENTIAL, AND
MINOR RESIDENTIAL STREETS
(ALL STREETS OTHER THAN 96' AND 74' STREETS)**



NOTE:

1. IN ACCORDANCE WITH STREET CLASSIFICATIONS, ALL ARE SERIES 'A' OR SERIES 'B' STREET LIGHTS WITH ANSI TYPE III LIGHT DISTRIBUTIONS PATTERN. SEE STANDARD DRAWINGS SL-2 AND SL-24


DATE: 09/22/2017		NOT TO SCALE	
REVISION	BY	APPROVED	DATE
1	SJB	SMA	03-07-2025

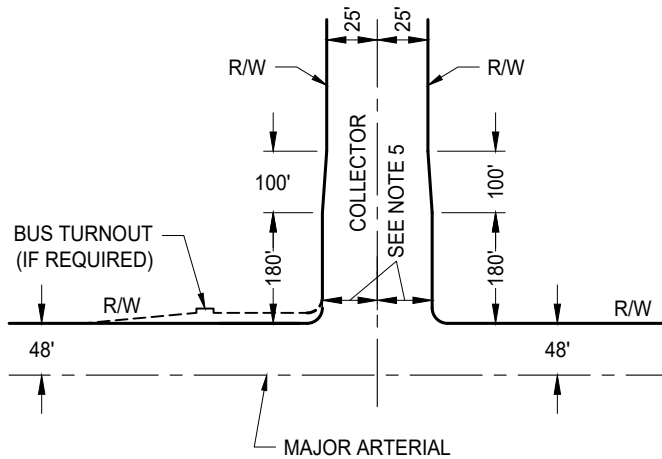
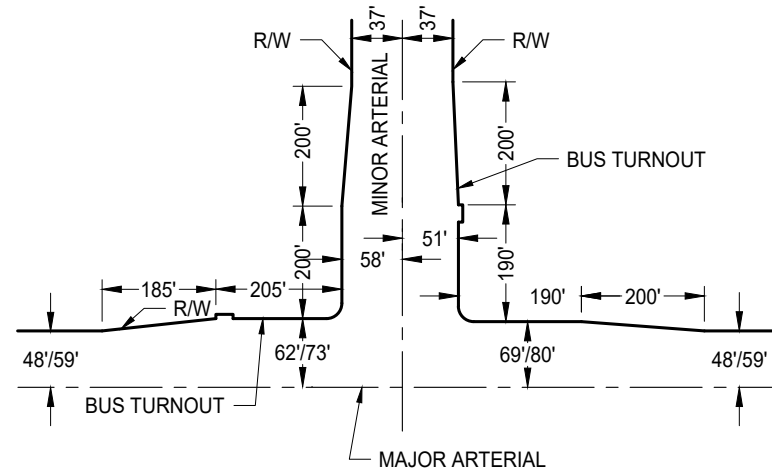
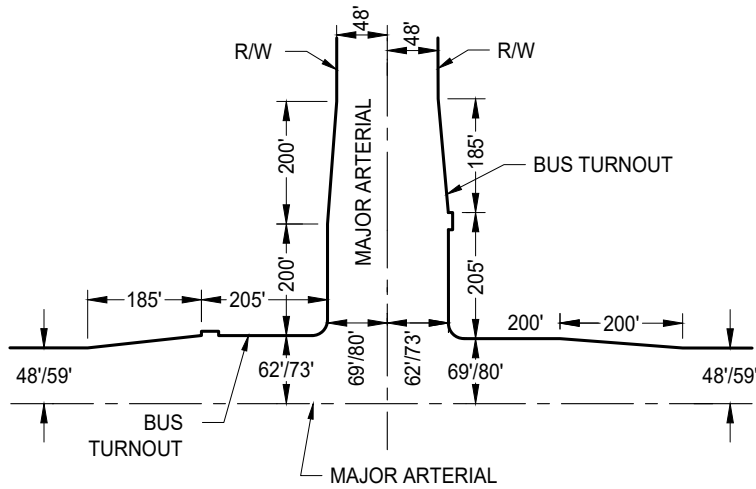
CITY OF ELK GROVE - PUBLIC WORKS

**COMMON TYPE TYPICAL LOCATIONS
COLLECTOR AND RESIDENTIAL STREETS
(SERIES 'A' / SERIES 'B')**

APPROVED BY: _____ 03-12-2025
CITY ENGINEER DATE

DRAWING NUMBER
SL - 26





NOTES:

1. RADIUS AT CORNERS IS 33'.
2. FOR BUS TURNOUT DIMENSIONS, SEE STANDARD DRAWING ST-27
3. TYPE 2 CURB AND GUTTER SHALL BE REQUIRED WITHIN ALL CURB RETURNS, AND AT ALL BUS TURNOUTS AS SHOWN ON STANDARD DRAWINGS ST-27 AND ST-28.
4. HALF WIDTH OF 56' COLLECTOR STREETS AT APPROACH TO MAJOR STREETS SHALL BE 31' IF STREET DOES NOT HAVE BICYCLE LANES AND 35' IF IT DOES. HALF WIDTH OF 50' COLLECTOR STREETS AT APPROACH TO MAJOR STREETS SHALL BE 33' IF STREET DOES NOT HAVE BICYCLE LANES AND 37' IF IT DOES.
5. SIDEWALK SHALL BE INCLUDED AS PART OF THE RIGHT-OF-WAY WHEN ADJACENT TO THE BACK OF CURB SUCH AS AT INTERSECTIONS AND DRIVEWAYS.


DATE: 09/22/2007		NOT TO SCALE	
REVISION	BY	APPROVED	DATE
1	SJB	SMA	03-07-2025

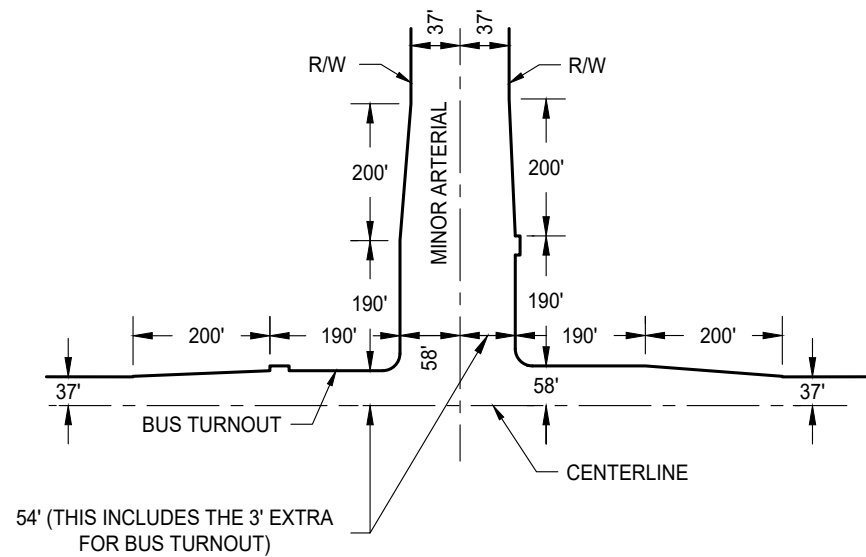
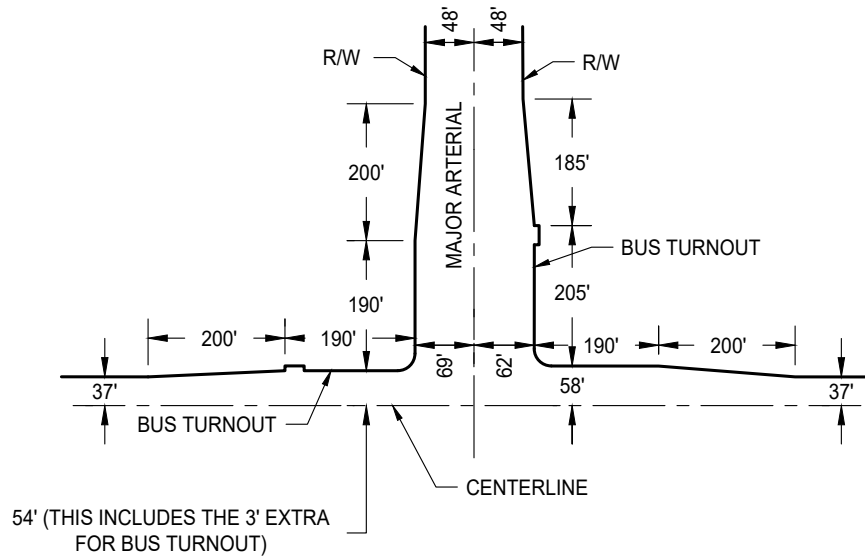
CITY OF ELK GROVE - PUBLIC WORKS

**WIDENING DETAILS FOR
MAJOR ARTERIALS AT VARIOUS
STREET INTERSECTIONS**

APPROVED BY: _____
03-12-2025
 CITY ENGINEER DATE

DRAWING NUMBER
ST - 11





NOTES:

1. RADIUS AT CORNERS IS 25'.
2. FOR BUS TURNOUT DIMENSIONS, SEE STANDARD DRAWING ST-27.
3. TYPE 2 CURB AND GUTTER SHALL BE REQUIRED WITHIN ALL CURB RETURNS, AND AT ALL BUS TURNOUTS AS SHOWN ON STANDARD DRAWINGS ST-27 AND ST-28.
4. SIDEWALK SHALL BE INCLUDED AS PART OF THE RIGHT-OF-WAY WHEN ADJACENT TO THE BACK OF CURB SUCH AS AT INTERSECTIONS AND DRIVEWAYS.

DATE: 09/22/2007		NOT TO SCALE	
REVISION	BY	APPROVED	DATE
1	SJB	SMA	03-07-2025


CITY OF ELK GROVE - PUBLIC WORKS

**WIDENING DETAILS
FOR MINOR ARTERIALS AT MAJOR
STREET INTERSECTIONS**

APPROVED BY: _____
CITY ENGINEER

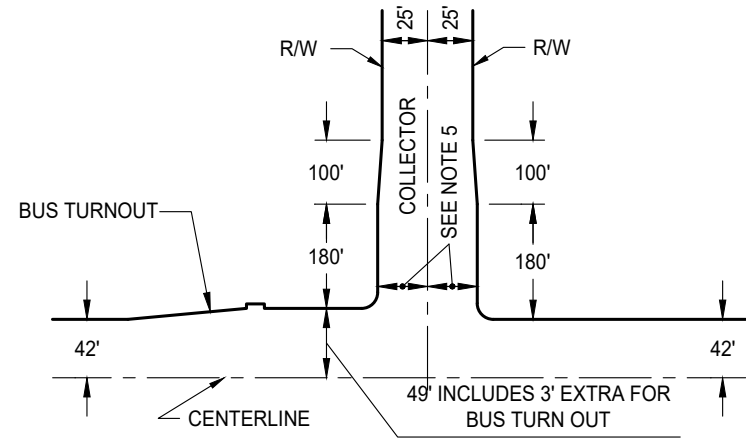
03-12-2025
DATE

DRAWING NUMBER
ST - 12A

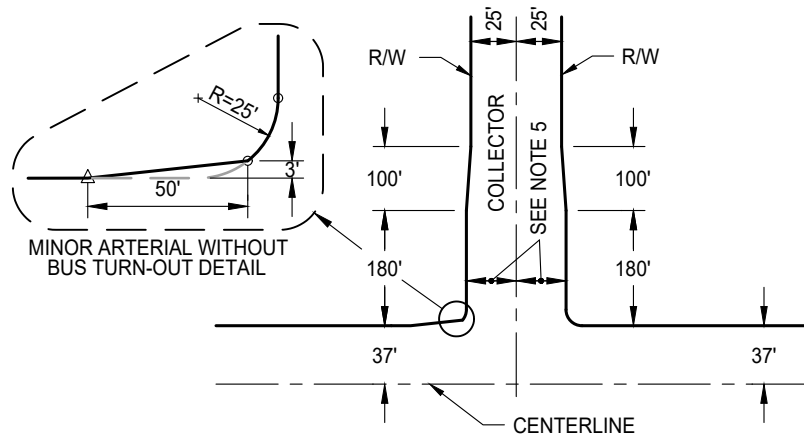


NOTES:

1. RADIUS AT CORNERS IS 33'.
2. FOR BUS TURNOUT DIMENSIONS, SEE STANDARD DRAWING ST-27.
3. TYPE 2 CURB AND GUTTER SHALL BE REQUIRED WITHIN ALL CURB RETURNS, AND AT ALL BUS TURNOUTS AS SHOWN ON STANDARD DRAWINGS ST-27 AND ST-28.
4. HALF WIDTH OF 56' COLLECTOR STREETS AT APPROACH TO MAJOR STREETS SHALL BE 31' IF STREET DOES NOT HAVE BICYCLE LANES AND 35' IF IT DOES. HALF WIDTH OF 50' COLLECTOR STREETS AT APPROACH TO MAJOR STREETS SHALL BE 33' IF STREET DOES NOT HAVE BICYCLE LANES AND 37' IF IT DOES.
5. SIDEWALK SHALL BE INCLUDED AS PART OF THE RIGHT-OF-WAY WHEN ADJACENT TO THE BACK OF CURB SUCH AS AT INTERSECTIONS AND DRIVEWAYS.



WITH BUS TURNOUT



WITHOUT BUS TURNOUT

DATE 09/22/2007		NOT TO SCALE	
REVISION	BY	APPROVED	DATE
1	SJB	SMA	03-07-2025

CITY OF ELK GROVE - PUBLIC WORKS

**WIDENING DETAILS FOR
MINOR ARTERIALS AT COLLECTOR
STREET INTERSECTIONS**

APPROVED BY:

[Signature] 03-12-2025

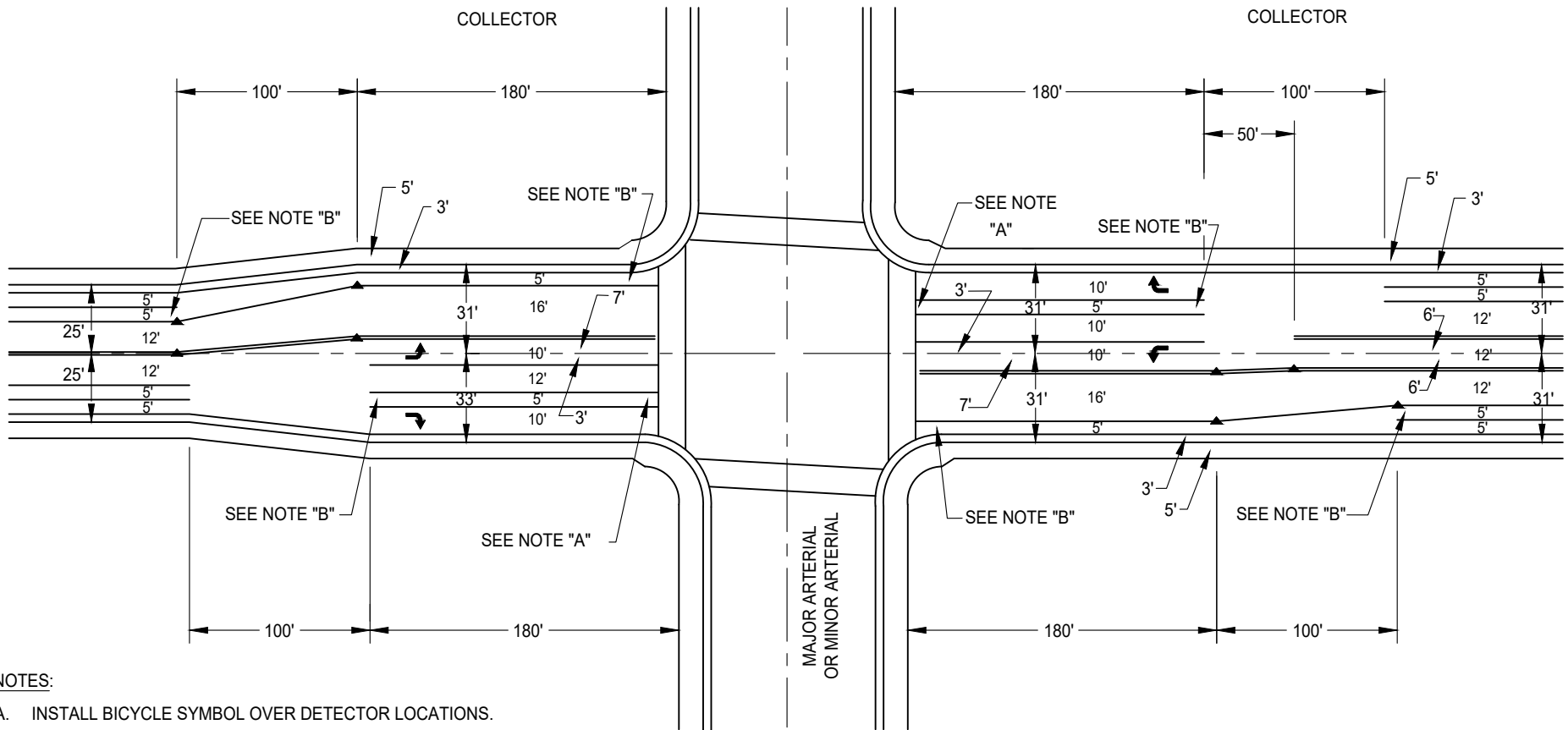
CITY ENGINEER

DATE



DRAWING NUMBER

ST - 12B



NOTES:

- A. INSTALL BICYCLE SYMBOL OVER DETECTOR LOCATIONS.
- B. INSTALL "BIKE", "LANE" AND " → " PAVEMENT LEGENDS AT THE FOLLOWING LOCATIONS:
 - APPROXIMATELY 10' PAST CROSSWALKS.
 - AT THE BEGINNING OF BICYCLE LANE ADJOINING RIGHT-TURN LANES.
- C. DIMENSIONS ARE TO CENTERLINE OF STRIPES.
- D. SIDEWALK SHALL BE INCLUDED AS PART OF THE RIGHT-OF-WAY WHEN ADJACENT TO THE BACK OF CURB SUCH AS AT INTERSECTIONS AND DRIVEWAYS.
- E. BIKE LANE MARKINGS SHALL BE IN ACCORDANCE WITH THE CURRENT VERSION OF THE CALIFORNIA MUTCD.

DATE: 09/22/2007		NOT TO SCALE	
REVISION	BY	APPROVED	DATE
1	SN	SA	07-29-2021
2	SJB	SMA	03-07-2025

CITY OF ELK GROVE - PUBLIC WORKS

**TYPICAL STRIPING FOR COLLECTOR STREETS
WITH BICYCLE LANES AT INTERSECTIONS
WITH ARTERIAL STREETS**

APPROVED BY:

03-12-2025

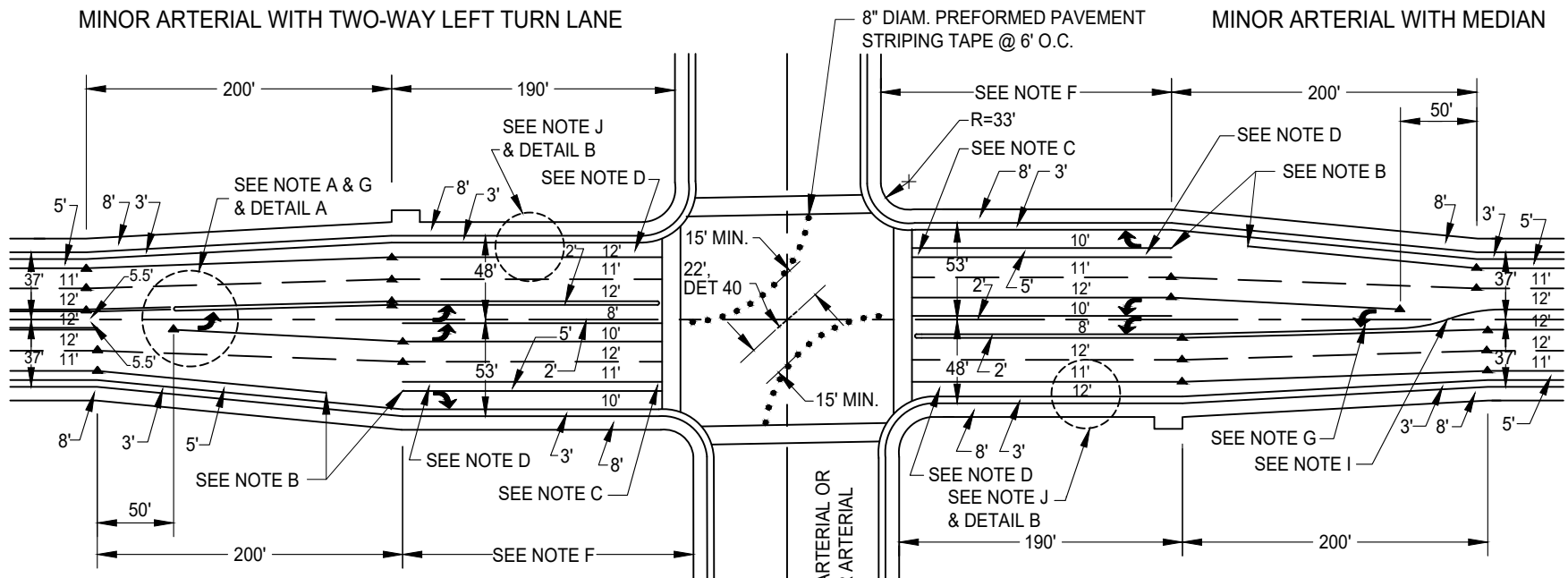
CITY ENGINEER

DATE



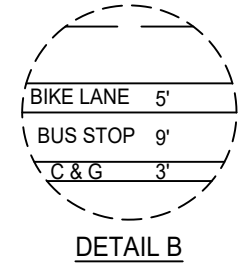
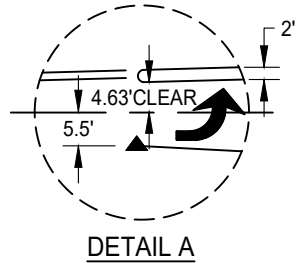
DRAWING NUMBER

ST - 13



NOTES:

- A. END OF RAISED MEDIAN MAY BE MOVED AS NECESSARY FOR DRIVEWAY LOCATIONS. SEE IMPROVEMENT STANDARD SECTION 4-7 (G)
- B. BIKE LANE STRIPE TO BE DISCONTINUED APPROX. 100' FROM START OF RIGHT-TURN LANE AND RESUMED AT BEGINNING OF RIGHT-TURN-ONLY LANE.
- C. INSTALL BICYCLE SYMBOL OVER DETECTOR LOCATIONS.
- D. INSTALL "BIKE", "LANE" AND "➔" PAVEMENT LEGENDS AS PER THE CURRENT VERSION OF THE CALIFORNIA MUTCD AT THE FOLLOWING LOCATIONS:
 - APPROXIMATELY 10' PAST CROSSWALKS;
 - AT BEGINNING OF BICYCLE LANE ADJOINING RIGHT-TURN LANES.
- E. DIMENSIONS ARE TO CENTERLINE OF STRIPES.
- F. LENGTH OF APPROACH ADJACENT TO RIGHT TURN LANE SHALL BE: 200' APPROACHING A MAJOR ARTERIAL 190' APPROACHING A MINOR ARTERIAL.
- G. DIRECTIONAL ARROWS ARE PROVIDED AT THE BEGINNING OF ALL TURN POCKETS. INSTALL ADDITIONAL ARROWS IF LENGTH OF TURN POCKET EXCEEDS 250 FT.
- H. ALL PAVEMENT MARKINGS AND STRIPING AS PER THE CURRENT VERSION OF THE CALIFORNIA MUTCD.
- I. 90' BAY TAPER AS PER THE CURRENT CALTRANS HDM.




- J. SIDEWALK SHALL BE INCLUDED AS PART OF THE RIGHT-OF-WAY WHEN ADJACENT TO THE BACK OF CURB SUCH AS AT INTERSECTIONS AND DRIVEWAYS.
- K. IF THE DRIVEWAY, APPROVED BY PUBLIC WORKS, IS WITHIN THE EXPANDED INTERSECTION, ADDITIONAL 3 FEET RIGHT-OF-WAY WILL BE REQUIRED. SEE DETAIL "B".
- L. BIKE LANE MARKINGS SHALL BE IN ACCORDANCE WITH THE CURRENT VERSION OF THE CALIFORNIA MUTCD.

DATE: 09/22/2007		NOT TO SCALE	
REVISION	BY	APPROVED	DATE
1	SN	SA	07-29-2021
2	SJB	SMA	03-07-2025

CITY OF ELK GROVE - PUBLIC WORKS

TYPICAL STRIPING FOR MINOR ARTERIAL INTERSECTIONS WITH ARTERIALS

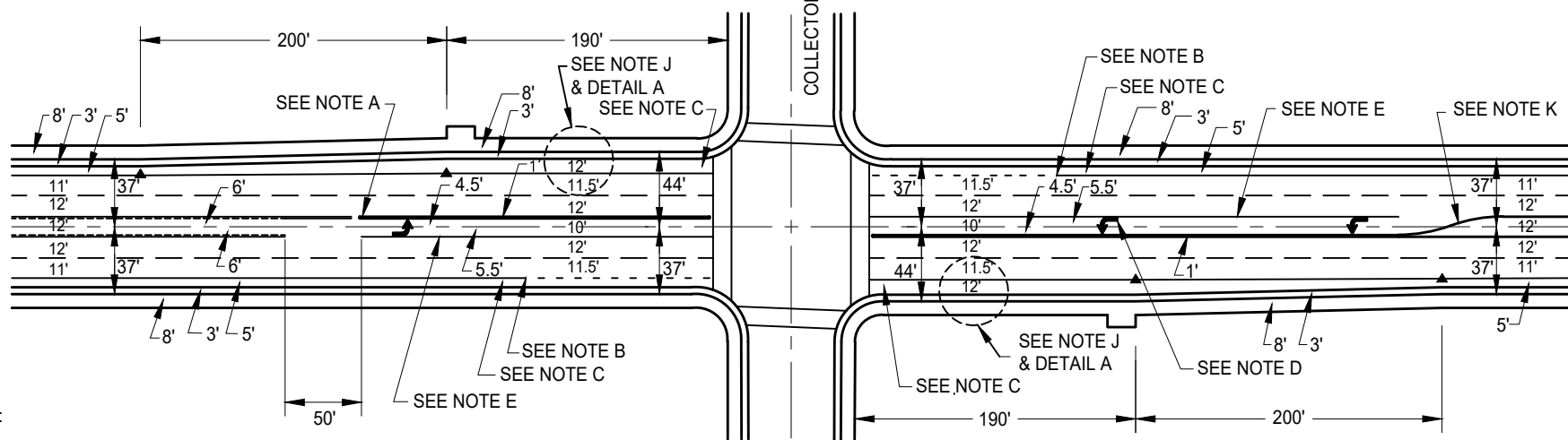
APPROVED BY:  03-12-2025
 CITY ENGINEER DATE

DRAWING NUMBER
ST - 14A



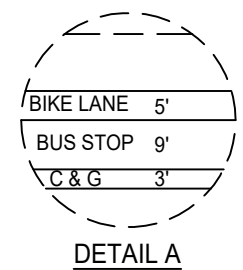
MINOR ARTERIAL WITH TWO-WAY LEFT TURN LANE

MINOR ARTERIAL WITH MEDIAN



NOTES:


- A. END OF RAISED MEDIAN MAY BE MOVED AS NECESSARY FOR DRIVEWAY LOCATIONS. SEE IMPROVEMENT STANDARD SECTION 4-7 (G)
- B. BIKE LANE STRIPING TO BE DASHED BEGINNING 120' FROM INTERSECTION.
- C. INSTALL "BIKE", "LANE", AND " → " PAVEMENT LEGENDS AS PER THE CURRENT VERSION OF THE CALIFORNIA MUTCD, AT THE FOLLOWING LOCATIONS:
 - APPROXIMATELY 10' PAST CROSSWALKS;
 - BEFORE START OF DASHED BICYCLE LANE STRIPING.
- D. DIRECTIONAL ARROWS ARE PROVIDED AT THE BEGINNING OF ALL TURN POCKETS. INSTALL ADDITIONAL LEFT-TURN ARROW MIDWAY IN THE LENGTH OF THE TURN LANE IF IT EXCEEDS 250'.
- E. CONSULT WITH PUBLIC WORKS TO DETERMINE POCKET LENGTH.
- F. DIMENSIONS ARE TO CENTERLINE OF STRIPES.
- G. SHOULD DESIGN OF ROADWAY NOT INCLUDE BUS TURNOUTS, DESIGN OF INTERSECTIONS OF ARTERIAL & COLLECTOR STREETS SHALL CONFORM TO THE DETAIL ON DRAWING ST-12B.
- H. ALL PAVEMENT MARKINGS AND STRIPING AS PER THE CURRENT VERSION OF THE CALIFORNIA MUTCD.
- I. SIDEWALK SHALL BE INCLUDED AS PART OF THE RIGHT-OF-WAY WHEN ADJACENT TO THE BACK OF CURB SUCH AS AT INTERSECTIONS AND DRIVEWAYS.
- J. IF THE DRIVEWAY, APPROVED BY PUBLIC WORKS, IS WITHIN THE EXPANDED INTERSECTION, ADDITIONAL 3 FEET RIGHT OF WAY WILL BE REQUIRED. SEE DETAIL "A".
- K. 90° BAY TAPER AS PER THE CURRENT CALTRANS HDM.
- L. BIKE LANE MARKINGS SHALL BE IN ACCORDANCE WITH THE CURRENT VERSION OF THE CALIFORNIA MUTCD.




DATE: 09/22/2007		NOT TO SCALE	
REVISION	BY	APPROVED	DATE
1	SN	SA	07-29-2021
2	SJB	SMA	03-07-2025

CITY OF ELK GROVE - PUBLIC WORKS

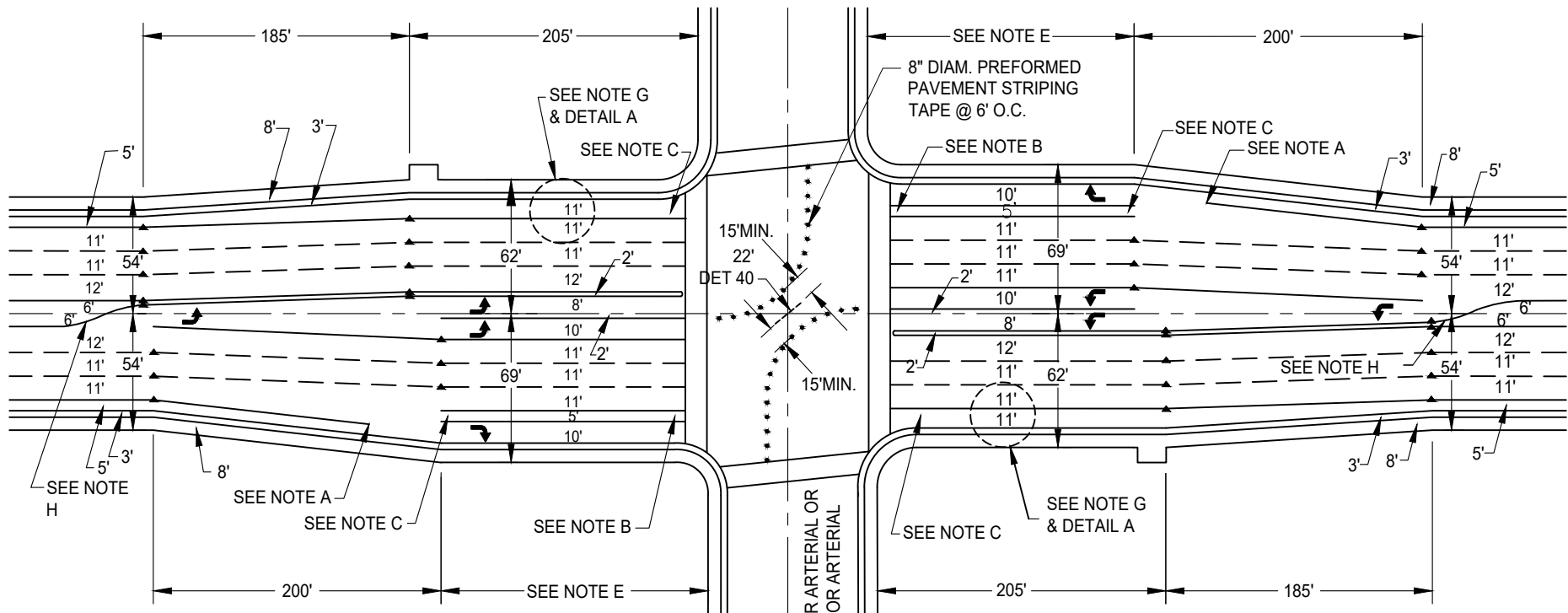
**TYPICAL STRIPING FOR
MINOR ARTERIAL INTERSECTIONS
WITH COLLECTORS**

APPROVED BY:  03-12-2025
 CITY ENGINEER DATE

DRAWING NUMBER
ST - 14B

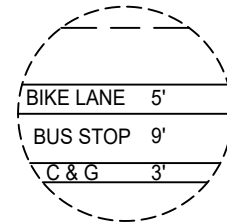


MAJOR ARTERIAL



NOTES:

- A. BIKE LANE STRIPE TO BE DISCONTINUED APPROXIMATELY 100' FROM RIGHT-TURN LANE AND RESUMED AT BEGINNING OF RIGHT-TURN ONLY LANE.
- B. INSTALL BICYCLE SYMBOL OVER DETECTOR LOCATIONS.
- C. INSTALL "BIKE", "LANE" AND " → " PAVEMENT LEGENDS AT THE FOLLOWING LOCATIONS:
 - APPROXIMATELY 10' PAST CROSSWALKS.
 - AT THE BEGINNING OF BICYCLE LANE ADJOINING RIGHT-TURN LANES.
- D. DIMENSIONS ARE TO CENTERLINE OF STRIPES.
- E. LENGTH OF APPROACH ADJACENT TO RIGHT TURN LANE SHALL BE: 200' APPROACHING A MAJOR ARTERIAL. 190' APPROACHING A MINOR ARTERIAL.
- F. SIDEWALK SHALL BE INCLUDED AS PART OF THE RIGHT-OF-WAY WHEN ADJACENT TO THE BACK OF CURB SUCH AS AT INTERSECTIONS AND DRIVEWAYS.
- G. IF THE DRIVEWAY, APPROVED BY PUBLIC WORKS, IS WITHIN THE EXPANDED INTERSECTION, ADDITIONAL 3 FEET RIGHT-OF-WAY WILL BE REQUIRED. SEE DETAIL A.
- H. 90° BAY TAPER AS PER THE CURRENT CALTRANS HDM.
- I. BIKE LANE MARKINGS SHALL BE IN ACCORDANCE WITH THE CURRENT VERSION OF THE CALIFORNIA MUTCD.



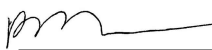
DETAIL A

DATE: 09/22/2007		NOT TO SCALE	
REVISION	BY	APPROVED	DATE
1	SN	SA	07-29-2021
2	SJB	SMA	03-07-2025

DATE: 09/22/2007		NOT TO SCALE	
REVISION	BY	APPROVED	DATE
1	SN	SA	07-29-2021
2	SJB	SMA	03-07-2025

CITY OF ELK GROVE - PUBLIC WORKS


TYPICAL STRIPING FOR MAJOR ARTERIAL INTERSECTIONS WITH ARTERIALS

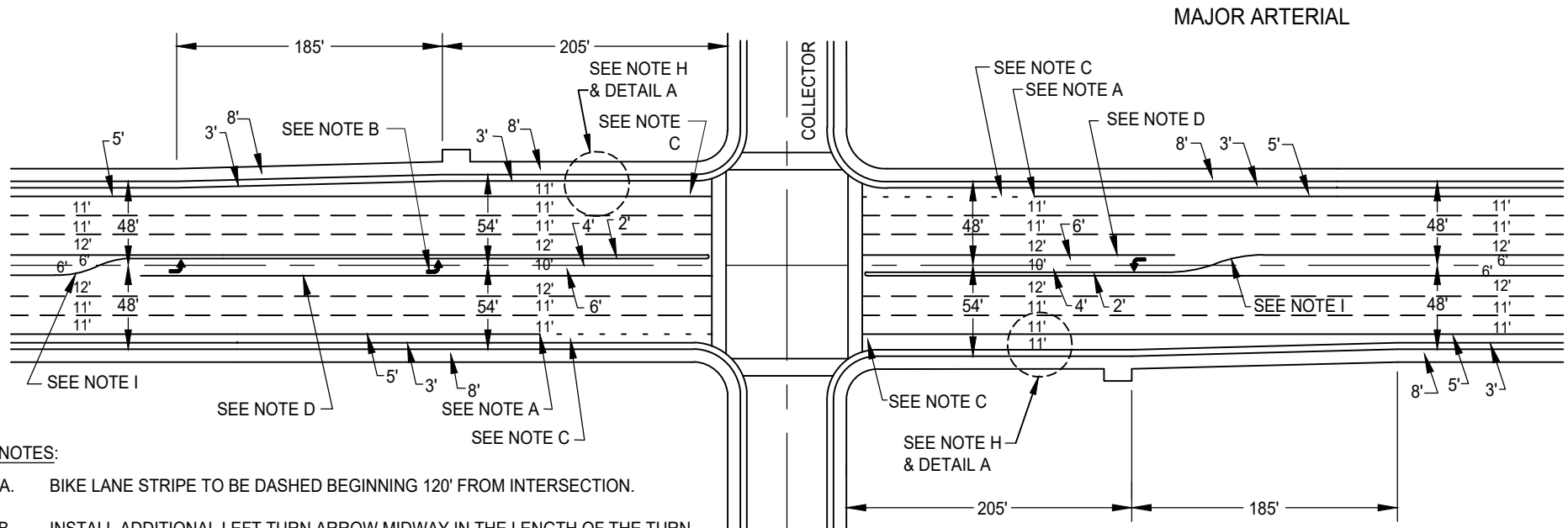
APPROVED BY: 

03-12-2025
DATE

CITY ENGINEER

DRAWING NUMBER
ST - 15A





NOTES:

- A. BIKE LANE STRIPE TO BE DASHED BEGINNING 120' FROM INTERSECTION.
- B. INSTALL ADDITIONAL LEFT TURN ARROW MIDWAY IN THE LENGTH OF THE TURN LANE IF IT EXCEEDS 250'.
- C. INSTALL "BIKE", "LANE" AND " " PAVEMENT LEGENDS AS PER THE CURRENT VERSION OF CALIFORNIA MUTCD AT THE FOLLOWING LOCATIONS:
 - APPROXIMATELY 10' PAST CROSSWALKS;
 - BEFORE START OF DASHED BICYCLE LANE STRIPING.
- D. LENGTH OF TURN POCKET IS TO BE SIZED ACCORDING TO TRAFFIC NEEDS. 180' MIN. SEE 3-10 H OF TRANSPORTATION DIVISION DESIGN PRACTICE GUIDE. AND DIRECTIONAL ARROWS ARE PROVIDED AT THE BEGINNING OF ALL TURN POCKETS. IF POCKET IS LONGER THAN 100 FT. ADDITIONAL ARROWS SHALL BE PLACED AT THE END.
- E. DIMENSIONS ARE TO CENTERLINE OF STRIPES.
- F. ALL PAVEMENT MARKINGS AND STRIPING AS PER THE CURRENT VERSION OF THE CALIFORNIA MUTCD.
- G. SIDEWALK SHALL BE INCLUDED AS PART OF THE RIGHT-OF-WAY WHEN ADJACENT TO THE BACK OF CURB SUCH AS AT INTERSECTIONS AND DRIVEWAYS.
- H. IF THE DRIVEWAY, APPROVED BY PUBLIC WORKS, IS WITHIN THE EXPANDED INTERSECTION, ADDITIONAL 3 FEET RIGHT OF WAY WILL BE REQUIRED. SEE DETAIL A.
- I. 90' BAY TAPER AS PER THE CURRENT CALTRANS HDM.
- J. BIKE LANE MARKINGS SHALL BE IN ACCORDANCE WITH THE CURRENT VERSION OF THE CALIFORNIA MUTCD.


DATE: 09/22/2007		NOT TO SCALE	
REVISION	BY	APPROVED	DATE
1	SN	SA	07-29-2021
2	SJB	SMA	03-07-2025

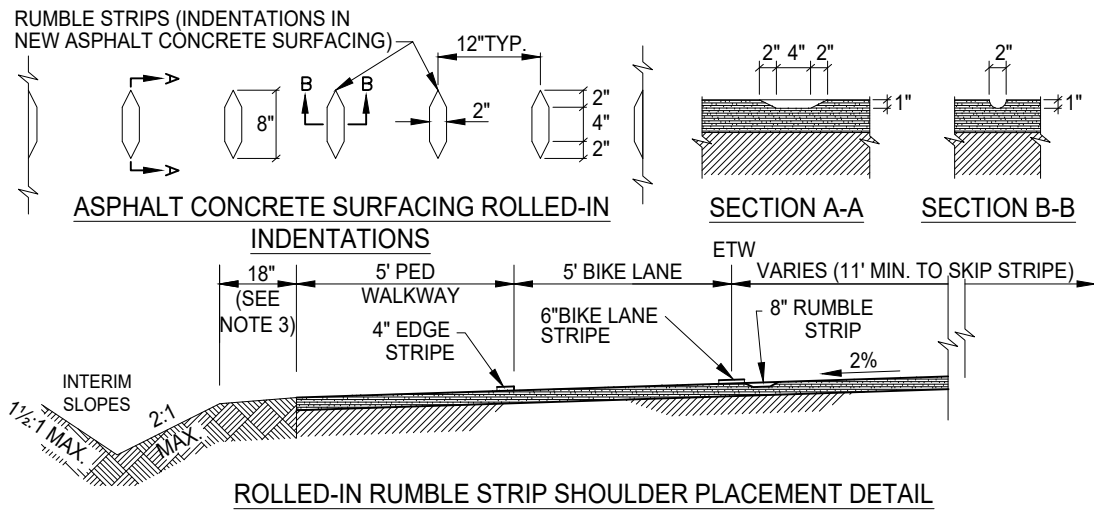
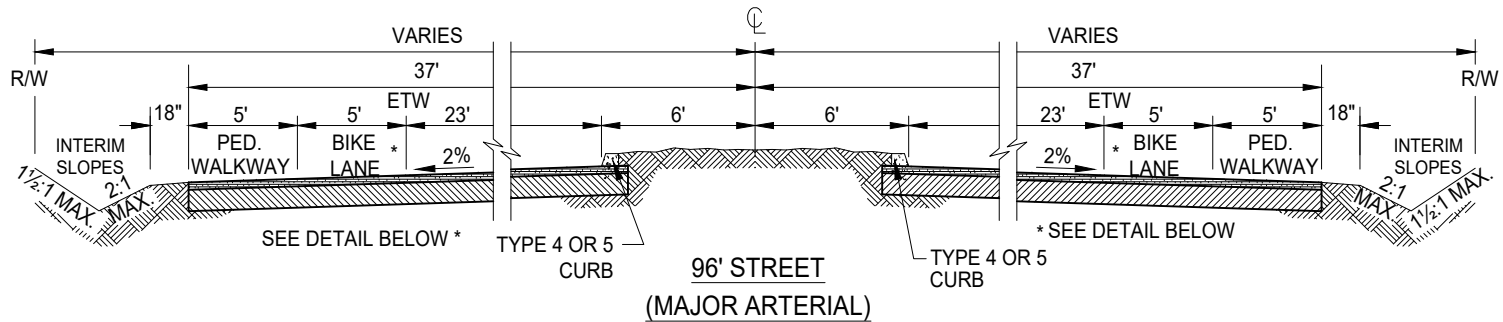
CITY OF ELK GROVE - PUBLIC WORKS

TYPICAL STRIPING FOR MAJOR ARTERIAL INTERSECTIONS WITH COLLECTORS

APPROVED BY: _____ 03-12-2025
 CITY ENGINEER DATE

DRAWING NUMBER
ST - 15B






NOTES:

1. RUMBLE STRIP SHALL STOP 120' FROM THE C.R. ON THE MAJOR ROAD APPROACHING ENTERING SIDE STREETS, AND BEGIN AT C.R. ON THE MAJOR ROAD DEPARTING ENTERING SIDE STREETS.
2. POSITION BIKE LANE LEGENDS BETWEEN RUMBLE STRIP AND EDGE LINE STRIPE.
3. EARTHEN SHOULDER MAY BE ELIMINATED IF SHOULDER CONFLICTS WITH TREES OR RIGHT-OF-WAY LIMITS AND FULL DEPTH ASPHALT SECTION IS USED.


DATE 09/22/2007		NOT TO SCALE	
REVISION	BY	APPROVED	DATE
1	SJB	SMA	03-07-2025

CITY OF ELK GROVE - PUBLIC WORKS

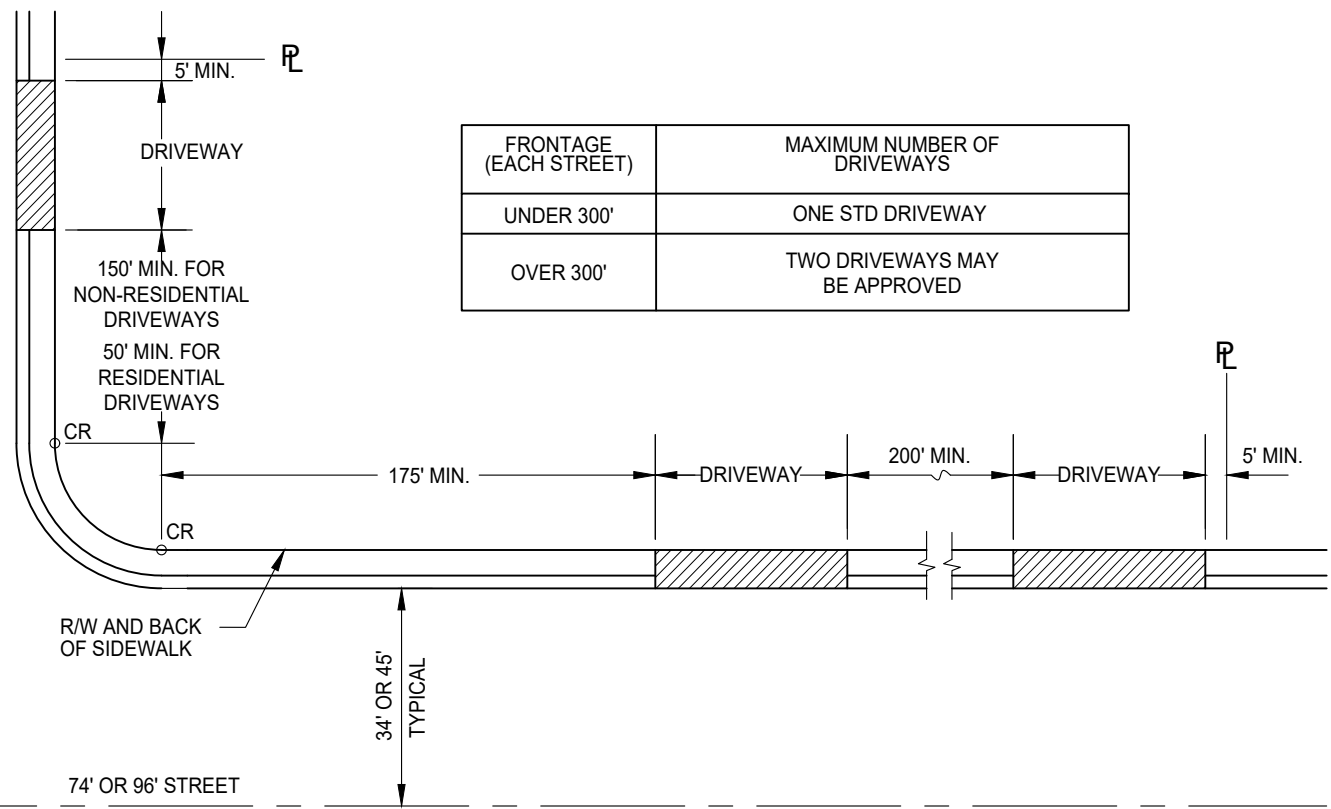
**TYPICAL SECTIONS INTERIM IMPROVEMENTS
FOR MAJOR ARTERIAL STREETS WITH
ROLLED-IN RUMBLE STRIPS**

APPROVED BY:

 CITY ENGINEER
 03-12-2025
 DATE

DRAWING NUMBER
ST - 17A



MINOR RESIDENTIAL, PRIMARY
RESIDENTIAL, OR COLLECTOR STREET



NOTES:

1. DRIVEWAYS ON 74' AND 96' STREETS SHALL HAVE A MINIMUM CLEAR SPACING OF 200' BETWEEN DRIVEWAYS. LESSER SPACING MAY BE APPROVED BY THE DIRECTOR FOR SMALL LOTS WHERE A MINIMUM OF ONE DRIVEWAY PER STREET FRONTAGE WILL BE APPROVED.
2. FOR ADDITIONAL DRIVEWAY REQUIREMENTS SEE SECTION 4-7 OF THE CITY IMPROVEMENT STANDARDS.

DATE: 09/22/2007		NOT TO SCALE	
REVISION	BY	APPROVED	DATE
1	SJB	SMA	03-07-2025

CITY OF ELK GROVE - PUBLIC WORKS


DRIVEWAY LOCATION STANDARDS

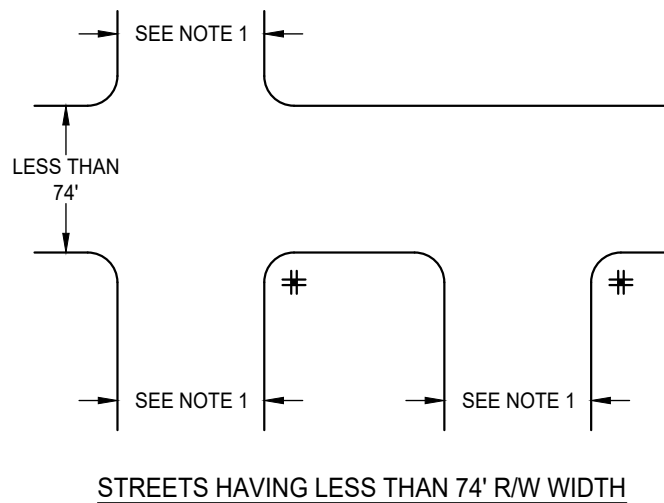
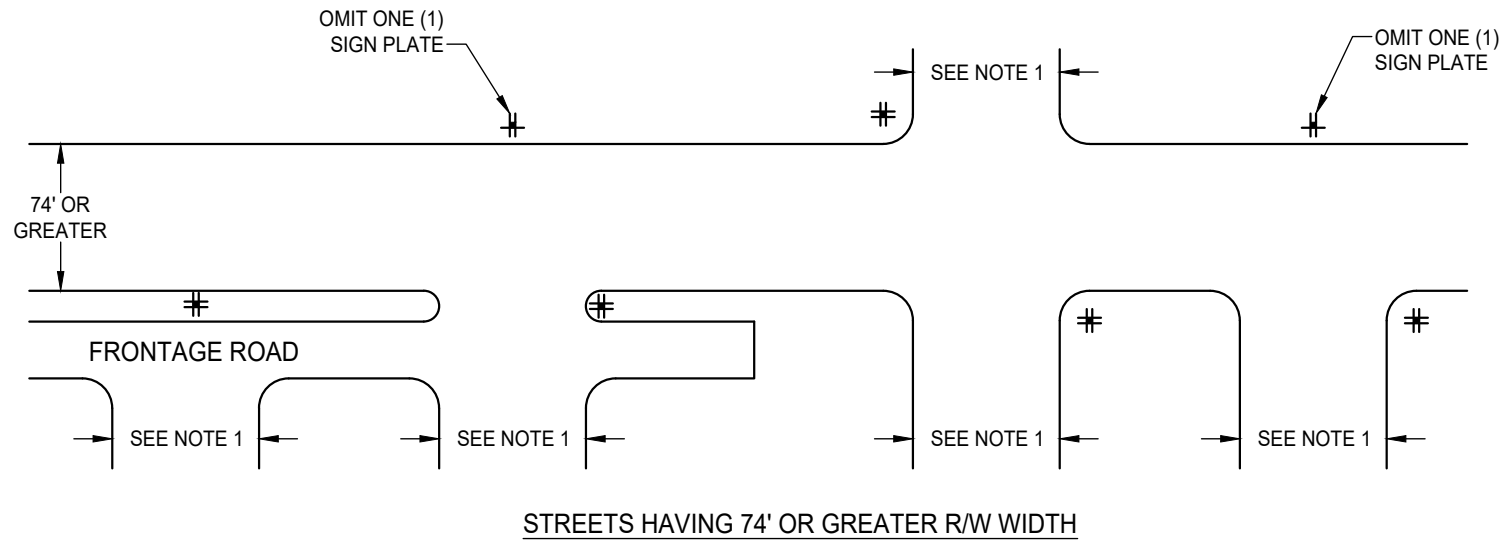
APPROVED BY: _____

03-12-2025
DATE

CITY ENGINEER

DRAWING NUMBER
ST - 22





NOTES:

1. SIDE STREETS INDICATED ARE STREETS WITH R/W WIDTHS EQUAL TO OR LESS THAN R/W WIDTH FOR THROUGH STREET
2. STREET SIGNS ARE TO BE LOCATED AT MID-RETURN APPROXIMATELY 30 INCHES BEHIND THE FACE OF CURB OR 6" BEHIND ATTACHED SIDEWALKS. SEE STANDARD DRAWING T-1 WHEN COMBINED WITH A STOP SIGN.
3. SIGNS SHALL BE INSTALLED ON NORTHEAST AND SOUTHWEST CORNERS OF INTERSECTIONS. SIGNS SHALL BE INSTALLED ON STREET LIGHTING STANDARD WHEN APPROPRIATE AND AS APPROVED BY CITY.
4. CITY TO REVIEW AND APPROVE SIGN LOCATIONS PRIOR TO INSTALLATION.
5. SEE STANDARD DRAWINGS T-1, T-3, T-4, T-5A, T-5B, AND T-6B.

LEGEND:

STANDARD STREET NAME SIGN INSTALLATION. FOUR (4) SIGN PLATES ON POST OR ON STREET LIGHT POLE.

THREE (3) SIGN PLATES ON POST OR ON STREET LIGHT POLE.

DATE 09/22/2007		NOT TO SCALE	
REVISION	BY	APPROVED	DATE
1	STN	JRW	02-16-2021
2	SJB	SMA	03-07-2025

CITY OF ELK GROVE - PUBLIC WORKS

STREET NAME SIGN GENERAL LOCATION

APPROVED BY:

[Signature] 03-12-2025

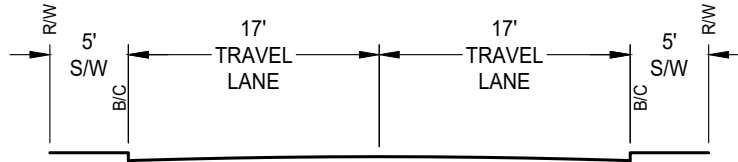
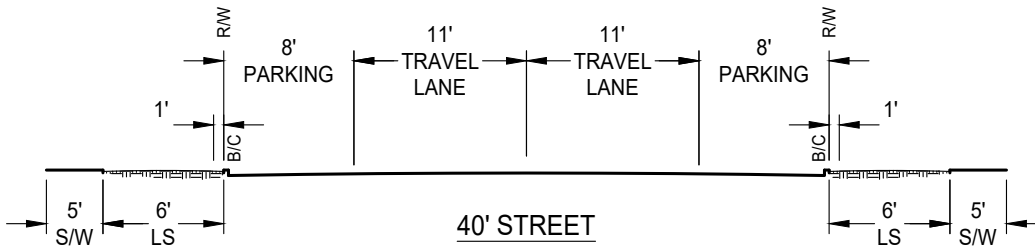
CITY ENGINEER

DATE

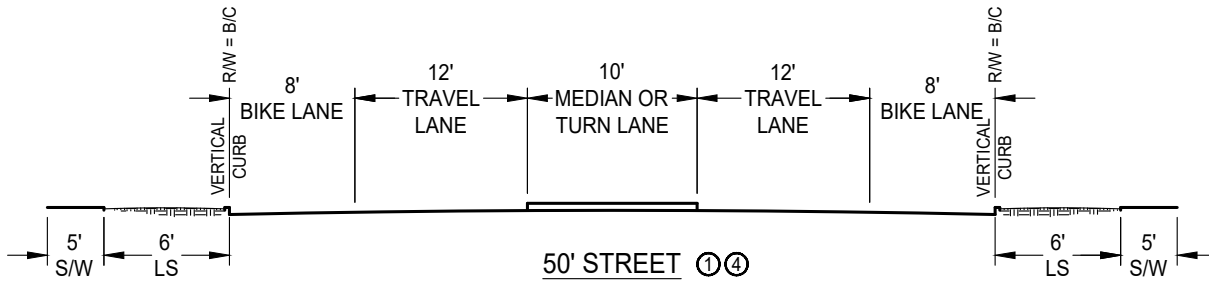


DRAWING NUMBER

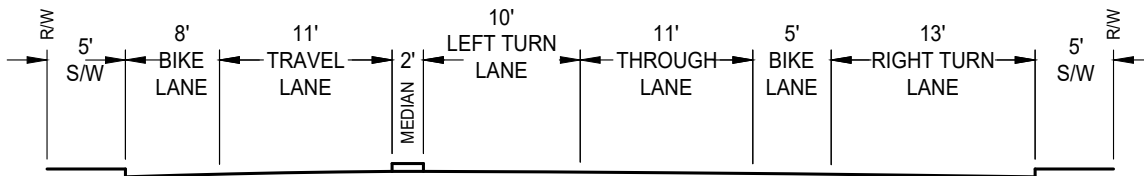
T - 6A



44' STREET ②



50' STREET ①④



70' EXPANDED INTERSECTION ④

AT THE DISCRETION OF PUBLIC WORKS

- ① ADJACENT TO SCHOOLS OR PARKS WIDEN THE SIDEWALK TO 8'. ALSO ADD 12'.
- ② 8' OF LANDSCAPING SEPARATING THE STREET FROM THE SIDEWALK MAY BE ADDED.
- ③ IF BIKE LANES ARE NOT NEEDED, REDUCE BY 11'.
- ④ LANDSCAPING AND SIDEWALK SHALL BE DEDICATED BY FEE TITLE OR PEDESTRIAN EASEMENT AS APPROVED BY THE DIRECTOR.

MINOR DEVIATION MAY BE APPROVED BY THE DIRECTOR.


DATE 09/22/2017		NOT TO SCALE	
REVISION	BY	APPROVED	DATE
1	STN	JRW	02-16-2021
2	SJB	SMA	03-07-2025

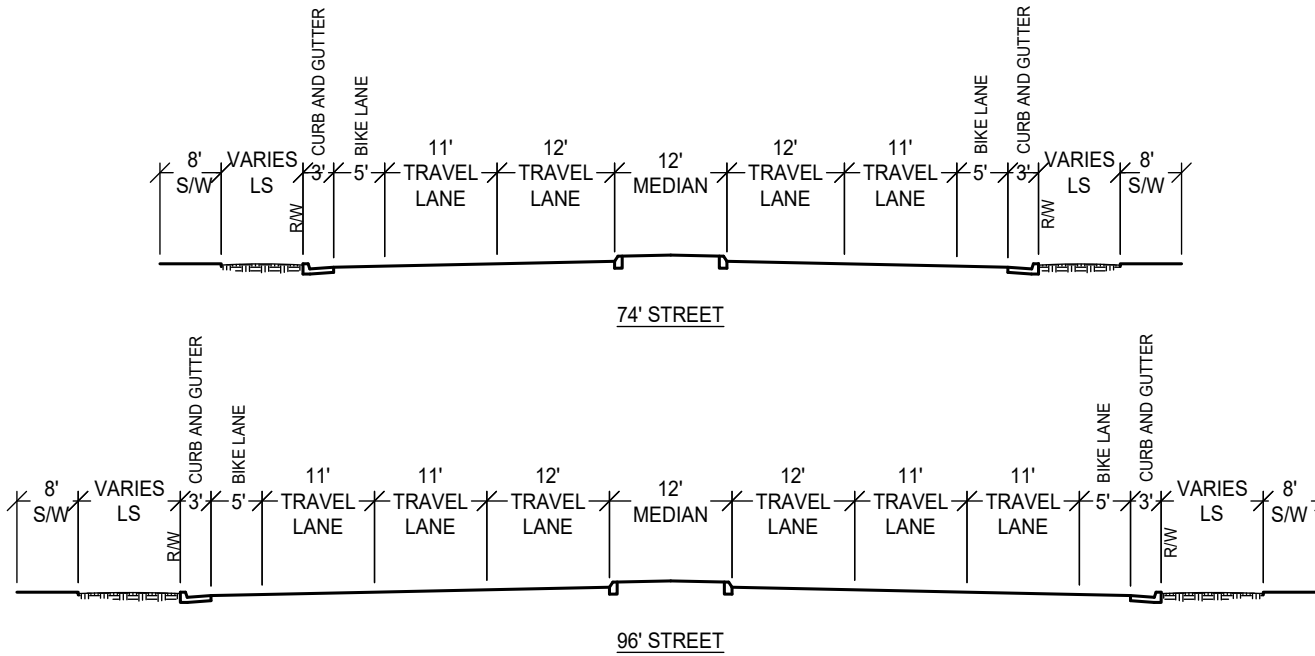
CITY OF ELK GROVE - PUBLIC WORKS

TYPICAL STREET CROSS SECTIONS
40', 44', 50' AND 70'

APPROVED BY: _____ 03-12-2025
CITY ENGINEER DATE

DRAWING NUMBER
T - 9A





AT THE DISCRETION OF PUBLIC WORKS

- ① LANDSCAPING AND SIDEWALK SHALL BE DEDICATED BY FEE TITLE OR PEDESTRIAN EASEMENT AS APPROVED BY THE DIRECTOR.
- MINOR DEVIATION MAY BE APPROVED BY THE DIRECTOR.

DATE: 09/22/2007		NOT TO SCALE	
REVISION	BY	APPROVED	DATE
1	STN	STN	07-20-2020
2	SJB	SMA	03-07-2025

CITY OF ELK GROVE - PUBLIC WORKS

TYPICAL STREET CROSS SECTIONS
74' AND 96'

APPROVED BY: _____ 03-12-2025

CITY ENGINEER _____ DATE

DRAWING NUMBER
T - 9B

