

Phone: 916.683.7111
Fax: 916.627.4400

www.elkgrovecity.org

PUBLIC WORKS
8401 Laguna Palms Way
Elk Grove, California 95758



Standards Update Transmittal

Reference Number: 2024v-13
Standards: Standard Drawing: L-21, L-22, and ST-45
Improvement Standards: 4.18

Update:

1. Modification to Standard Drawing:
 - a. L-21 KNOCK-DOWN BOLLARD AND STATIONARY BOLLARD, delete knock-down bollard detail to create L-21 for stationary bollard detail only.
 - b. L-22 REMOVABLE BOLLARD, delete standard.
 - c. ST-45 MULTI-USE TRAIL CONNECTION AT MID-BLOCK CROSSWALK, remove detail for knock-down bollard and diamond striping. Increase 4" yellow solid stripe to 6" stripe.
2. Modification to Improvement Standard:
 - a. 4.18 PEDESTRIAN LANES AND TRAILS, remove reference to Standard Drawing detail L-22 as it has been deleted.

Effect of Update:

1. The installation of bollards on pedestrian lanes and trails is no longer a standard requirement.

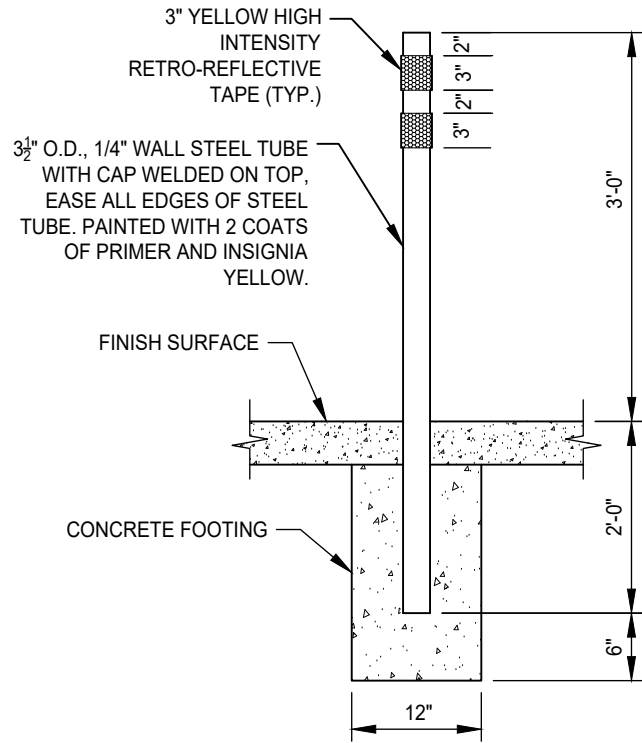
Request for Update Initiated By: Bollards Sub-Committee

Update Reviewed for Conformity and Consistency to Standards:

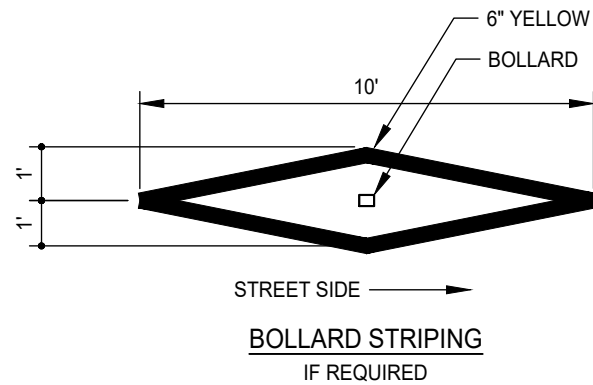
Shoaib Ahrary 5/27/2025 | 12:27 PM PDT
Shoaib Ahrary, PE, ESD Manager Date

Update to Standards Approved:

Kristin Parsons 5/27/2025 | 3:12 PM PDT
Kristin Parsons, PE, City Engineer Date



STATIONARY BOLLARD



DATE: 09/22/2007		NOT TO SCALE	
REVISION	BY	APPROVED	DATE
1	SJB	SMA	05-01-2025

CITY OF ELK GROVE - PUBLIC WORKS

APPROVED BY:

[Signature] 05-28-2025

CITY ENGINEER

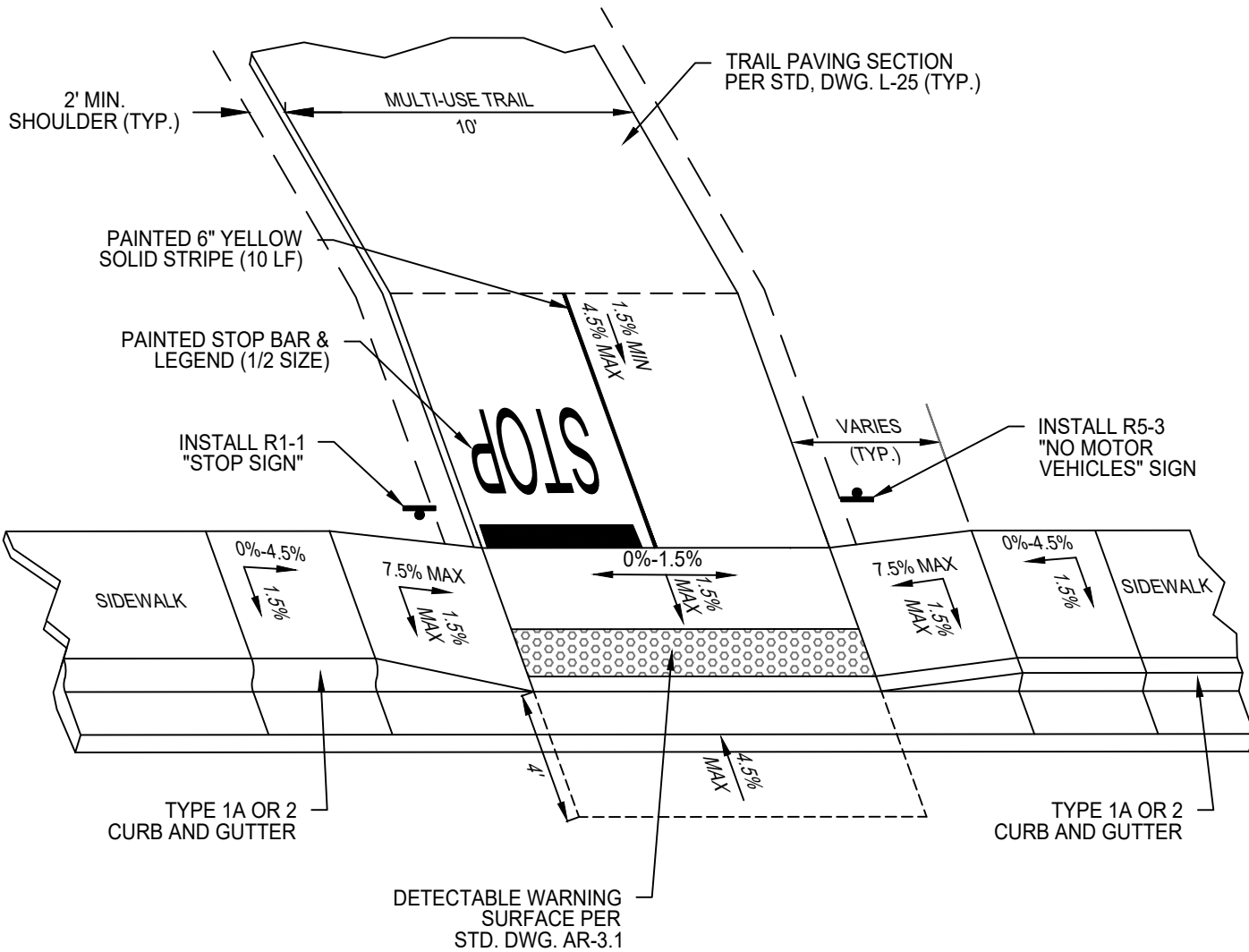
DATE

STATIONARY BOLLARD



DRAWING NUMBER

L - 21



NOTES:

1. TRAIL CONNECTION MUST BE AT A CROSSWALK.
2. MID-BLOCK CROSSWALK SIGNAGE, STRIPING AND/OR SIGNAL TO BE INSTALLED AS DETERMINED BY THE CITY.

DATE 03-02-2022		NOT TO SCALE	
REVISION	BY	APPROVED	DATE
1	SJB	SMA	05-01-2025

CITY OF ELK GROVE - PUBLIC WORKS


**MULTI-USE TRAIL CONNECTION
AT MID-BLOCK CROSSWALK**

APPROVED BY: _____

05-28-2025
DATE

CITY ENGINEER

DRAWING NUMBER
ST-45



4.18 PEDESTRIAN LANES AND TRAILS

Pedestrian lanes and trails within a development shall conform to the current version of the City's Bicycle, Pedestrian, and Trails Master Plan and these Standards.

Bollards placed as trail entrance barriers shall conform to Standard Drawings L-21.