

Phone: 916.683.7111  
Fax: 916.627.4400

www.elkgrovecity.org

PUBLIC WORKS  
8401 Laguna Palms Way  
Elk Grove, California 95758



## Standards Update Transmittal

Reference Number: 2024v-16  
Standards: Standard Drawings, SD-12, SD-13, SD-19.3 and new SD-19.4  
Standard Construction Specifications 38-5

### Update:

1. New Standard Drawing:
  - a. SD-19.4, PRECAST DROP INLET TYPE J, create a new standard drawing for precast drop inlet Type J
2. Modification to 2024 COEG Standard Drawings:
  - a. SD-12, DROP INLET B, changed open-back hood thickness to 3/4" from 1/2", add call out for curb and gutter with frame detail, remove arrow from plan view
  - b. SD-13, DROP INLET C, remove note 3, update title of sections, general cleanup of drawing
  - c. SD-19.3, MODIFIED TYPE J INLET, remove note 8, update note 6, remove manhole frame and cover, align plan view over section A-A, and general drawing clean up.
3. Modification to Standard Construction Specifications:
  - a. 38-5, STORM DRAIN INLET LATERALS, correct the minimum diameter width of lateral pipes from 18" to 12"

### Effect of Update:

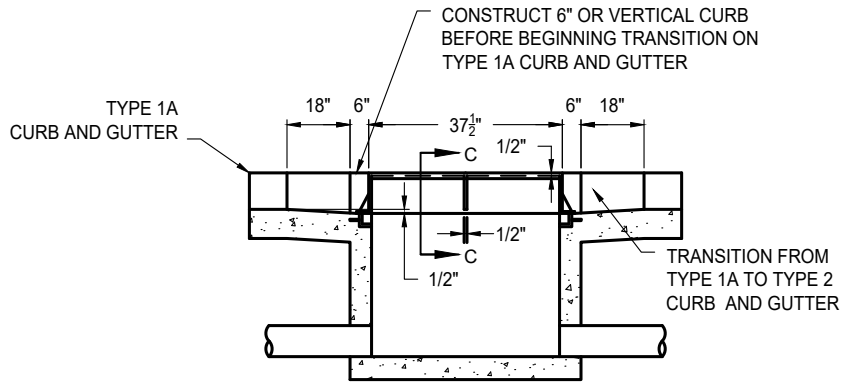
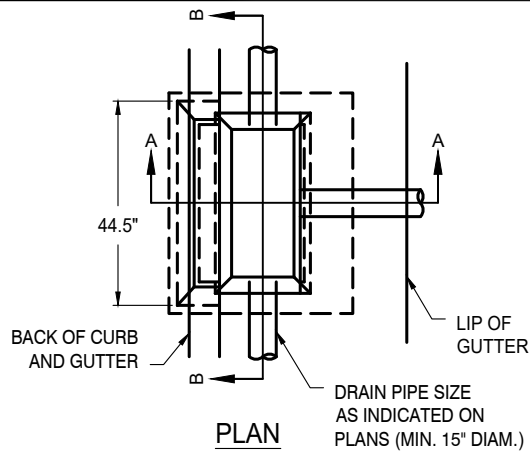
*New SD-19.4 is not in 2024 COEG standard drawings however, the list below is incorporated in 2024 COEG standard drawings SD-12, SD-13, and SD-19.3:*

1. Supplements standard drawings for drain inlets and provides inlet standard for inlets where led invert depth is between 48" and 120".
2. Allow to construct deeper inlets.
3. To provide an alternative when other standard inlets exceed a maximum depth of 6'.

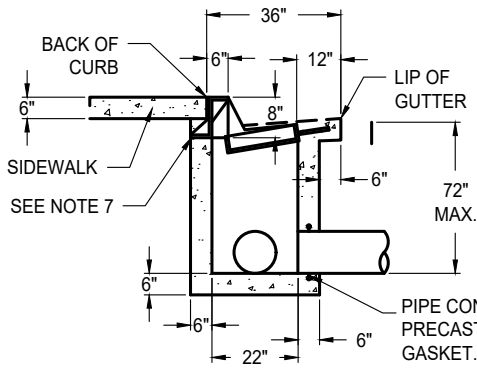
Request for Update Initiated By: John Pumphrey 08/11/23

Update Reviewed for Conformity and Consistency to Standards: Shoaib Ahrary 5/16/2025 | 3:27 PM PDT  
Shoaib Ahrary, PE, ESD Manager Date

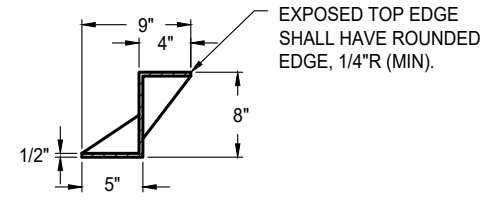
Update to Standards Approved: Kristin Parsons 5/27/2025 | 7:41 AM PDT  
Kristin Parsons, PE, City Engineer Date



SECTION B-B

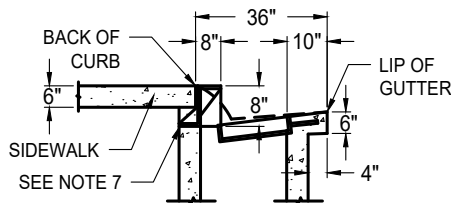


SECTION A-A  
TYPE 2 - VERTICAL CURB AND GUTTER

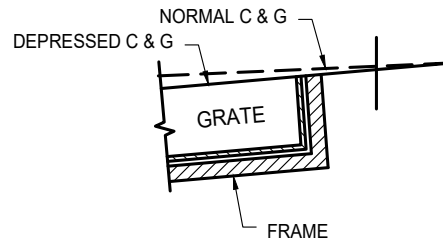


SECTION C-C  
OPEN-BACK HOOD (CAST IRON)

PIPE CONNECTIONS SHALL CONFORM TO ASTM C-923. PRECAST UNITS SHALL BE BOOT TYPE OR COMPRESSION GASKET. CAST-IN-PLACE UNITS SHALL INCLUDE A WATER STOP.



SECTION A-A  
TYPE 1A - ROLLED CURB AND GUTTER



CURB AND GUTTER WITH FRAME

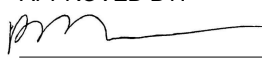
NOTES:

- STANDARD DEPRESSION FOR INLET IS 1-1/2" AND LIP OF GUTTER MUST BE SET BACK 3" FROM GUTTER FLOW LINE.
- FRAME AND GRATE SHALL CONFORM TO STANDARD DRAWINGS SD-14 AND SD-15.
- OPEN-BACK CAST IRON HOOD SHALL BE H-20 RATED, 1/2" THICK, AND REQUIRES NO GALVANIZING.
- EXPOSED EDGES SHALL HAVE A 1/8" R (MINIMUM).
- AN EDGING TOOL SHALL BE USED ON ALL EDGES WHERE THE CONCRETE SIDEWALK AND CURB MEET THE TOP OF THE HOOD.
- EXPOSED SURFACES OF THE GRATES, FRAMES AND HOODS WITH THE PARTS ASSEMBLED AND DISASSEMBLED SHALL BE PAINTED WITH COMMERCIAL QUALITY ASPHALTUM PAINT AFTER TESTING AND ASSEMBLY.
- SEE SD-12.1 FOR INSTALLATION OF INLETS AT DETACHED SIDEWALKS.
- WHEN MORE THAN ONE GRATE IS PROPOSED, STD DWG SD-16 FOR SUPPORT ASSEMBLY.

DATE: 09/22/2017		NOT TO SCALE	
REVISION	BY	APPROVED	DATE
01	SJB	SMA	04/4/2025

CITY OF ELK GROVE - PUBLIC WORKS

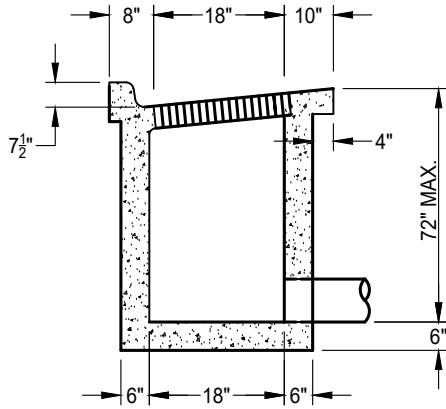
DROP INLET  
TYPE B

APPROVED BY:  
  
CITY ENGINEER  
5-27-2025  
DATE

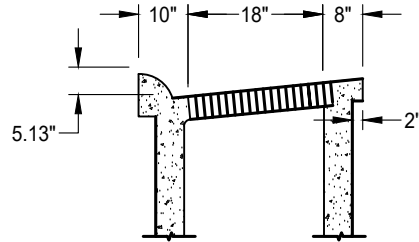


DRAWING NUMBER

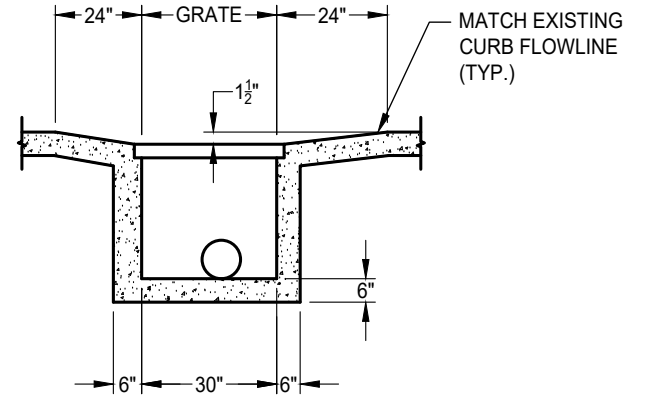
SD - 12



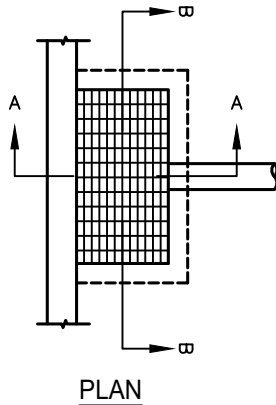
**SECTION A-A**  
TYPE 2 - VERTICAL CURB AND GUTTER



**SECTION A-A**  
TYPE 1A - ROLLED CURB AND GUTTER



**SECTION B-B**  
STANDARD DEPRESSION



**PLAN**

**NOTES:**

1. STANDARD DEPRESSION FOR INLET IS 1-1/2".
2. FRAME AND GRATE SHALL CONFORM TO STANDARD DRAWINGS SD-14 AND SD-15.
3. ALL EXPOSED EDGES SHALL HAVE A 1/8" R (MINIMUM).
4. AN EDGING TOOL SHALL BE USED ON ALL EDGES WHERE THE CONCRETE SIDEWALK AND CURB MEET THE TOP OF THE HOOD.
5. EXPOSED SURFACES OF THE GRATES, FRAMES, AND HOODS WITH THE PARTS ASSEMBLED AND DISASSEMBLED SHALL BE PAINTED WITH COMMERCIAL QUALITY ASPHALTUM PAINT AFTER TESTING AND ASSEMBLY.

DATE 09/22/2007		NOT TO SCALE	
REVISION	BY	APPROVED	DATE
01	BT	JRW	02/16/2021
02	SJB	SMA	04/04/2025

CITY OF ELK GROVE - PUBLIC WORKS

**DROP INLET  
TYPE C**

APPROVED BY:

 5-27-2025

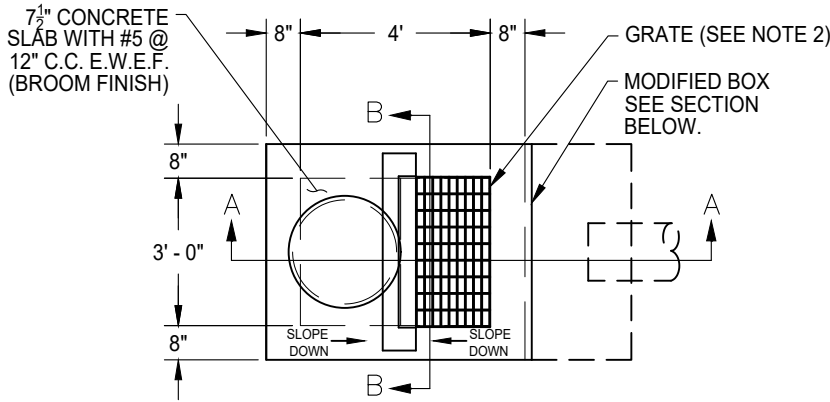
CITY ENGINEER

DATE

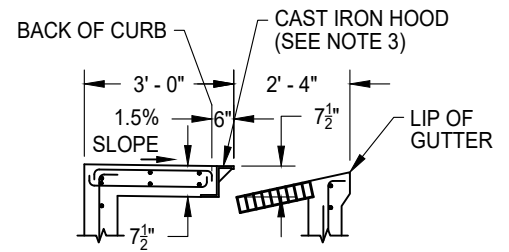


DRAWING NUMBER

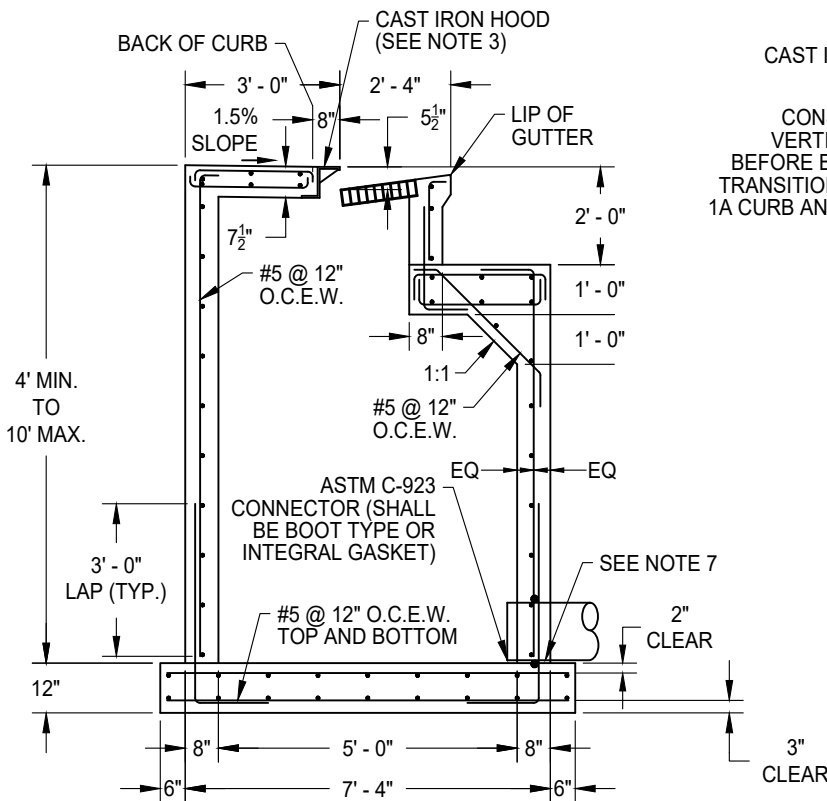
**SD - 13**



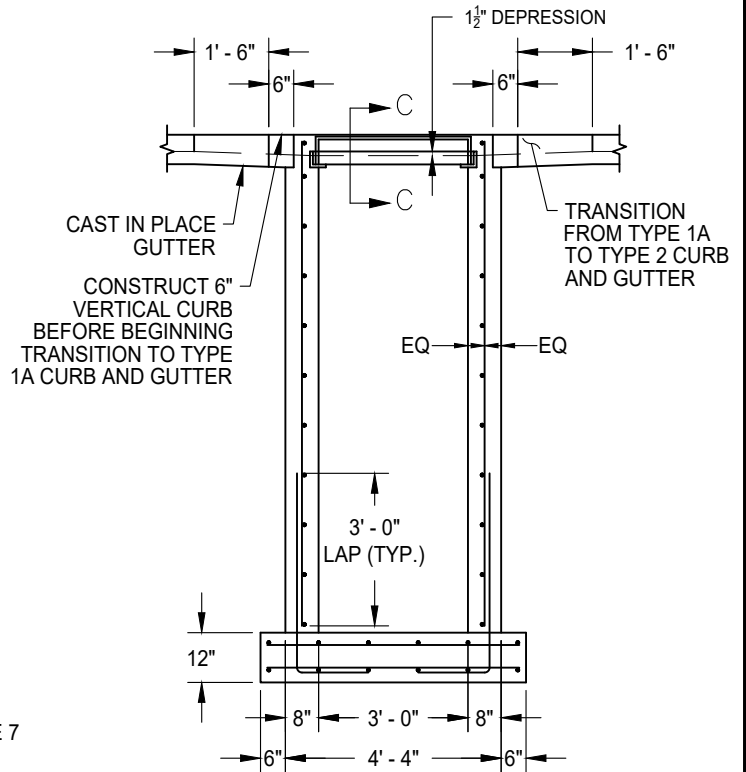
PLAN VIEW



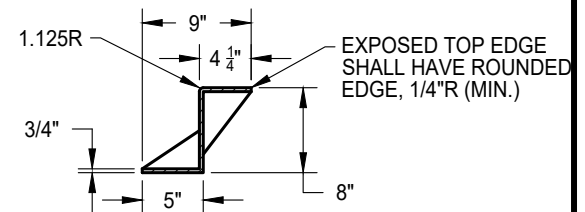
SECTION A-A  
TYPE 2 - VERTICAL CURB AND GUTTER  
(FOR INFORMATION NOT SHOWN OR NOTED REFER TO SECTION A-A TYPE 1A CURB AND GUTTER)



SECTION A-A  
TYPE 1A - ROLLED CURB AND GUTTER



SECTION B-B



SECTION C-C  
OPEN-BACK HOOD (CAST IRON)

- NOTES:**
- STANDARD DEPRESSION FOR INLET IS 1-1/2".
  - FRAME AND GRATE SHALL CONFORM TO STANDARD DRAWINGS SD-14 AND SD-15.
  - OPEN BACK CAST IRON HOOD SHALL BE H-20 RATED, 3/4" THICK, AND REQUIRES NO GALVANIZING.
  - ALL EXPOSED EDGES SHALL HAVE A 1/8" RADIUS (MINIMUM).
  - AN EDGING TOOL SHALL BE USED ON ALL EDGES WHERE THE CONCRETE SIDEWALK AND CURB MEET THE TOP OF THE HOOD.
  - EXPOSED SURFACES OF THE GRATES, FRAMES, AND HOODS WITH THE PARTS ASSEMBLED DISASSEMBLED SHALL BE PAINTED WITH COMMERCIAL QUALITY ASPHALTUM PAINT AFTER TESTING AND ASSEMBLY.
  - THE MINIMUM PIPE SIZE IS 12". IF THE INLET DEPTH IS GREATER THAN 4', THE MINIMUM PIPE SIZE SHALL BE 15".
  - THE MANHOLE FRAME AND COVER SHALL BE PER STANDARD DRAWING SD-9.


DATE: 09/22/2017		NOT TO SCALE	
REVISION	BY	APPROVED	DATE
01	SJB	SMA	04/04/2025

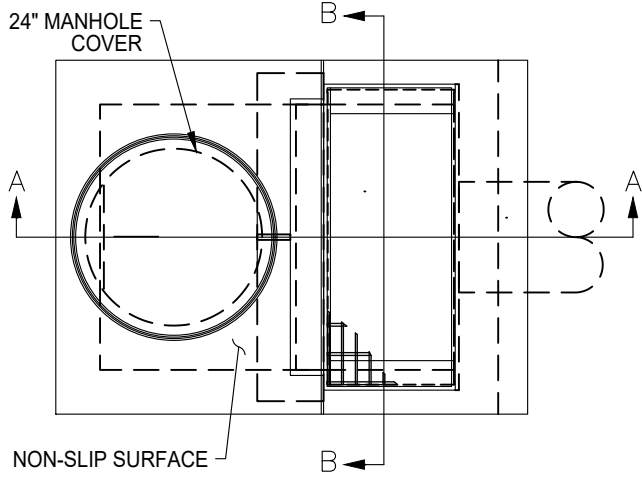
**CITY OF ELK GROVE - PUBLIC WORKS**

**MODIFIED TYPE J INLET**

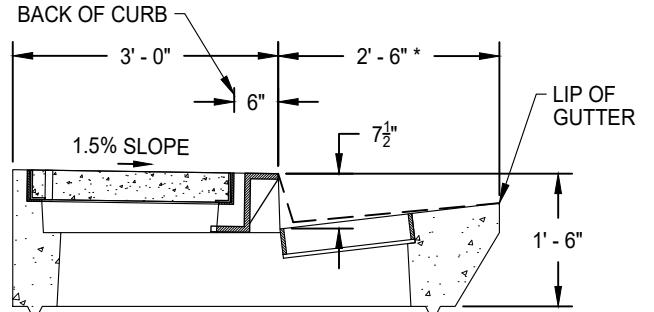
APPROVED BY: \_\_\_\_\_  
05-27-2025  
CITY ENGINEER DATE

DRAWING NUMBER  
**SD - 19.3**

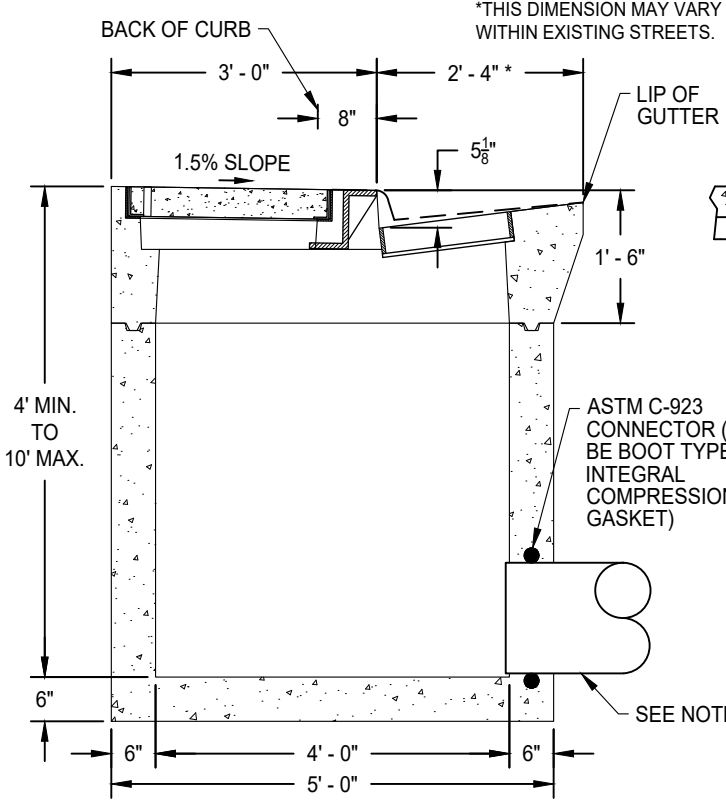




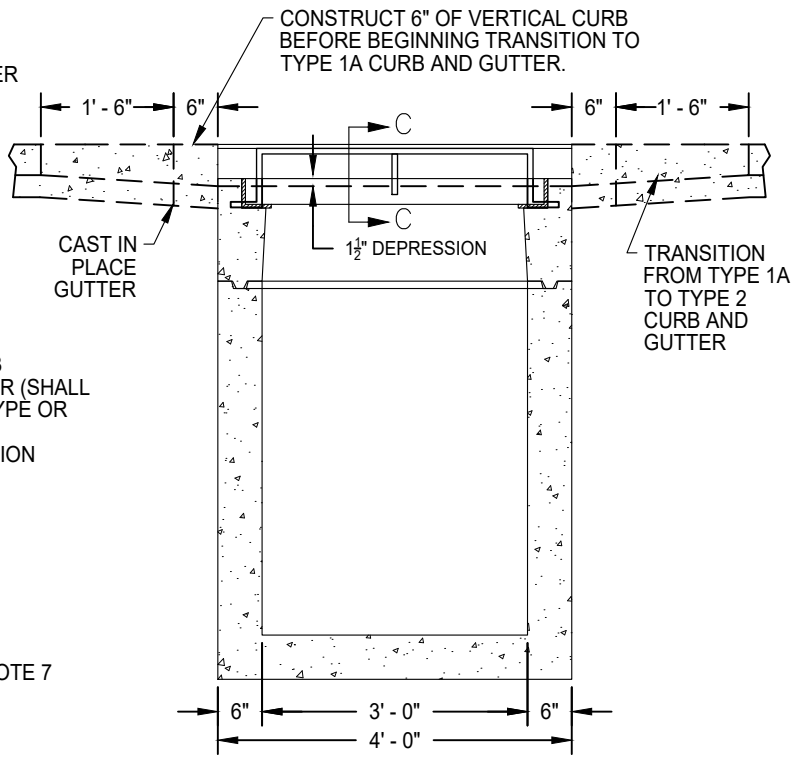
PLAN VIEW



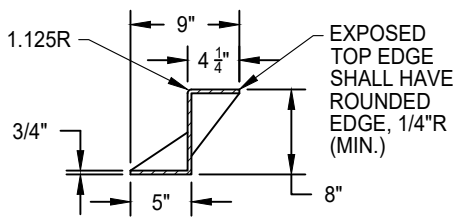
SECTION A-A  
TYPE 2 CURB AND GUTTER  
(FOR INFORMATION NOT SHOWN OR NOTED REFER TO SECTION A-A TYPE 1A CURB AND GUTTER)



SECTION A-A  
TYPE 1A CURB AND GUTTER



SECTION B-B



SECTION C-C  
OPEN-BACK HOOD (CAST IRON)

NOTES:

- STANDARD DEPRESSION FOR INLET IS 1-1/2".
- FRAME AND GRATE SHALL CONFORM TO STANDARD DRAWINGS SD-14 AND SD-15.
- OPEN BACK CAST IRON HOOD SHALL BE H-20 RATED, 3/4" THICK, AND REQUIRES NO GALVANIZING.
- ALL EXPOSED EDGES SHALL HAVE A 1/8" RADIUS (MINIMUM).
- AN EDGING TOOL SHALL BE USED ON ALL EDGES WHERE THE CONCRETE SIDEWALK AND CURB MEET THE TOP OF THE HOOD
- EXPOSED SURFACES OF THE GRATE, FRAMES AND HOOD WITH THE PARTS ASSEMBLED AND DISASSEMBLED SHALL BE PAINTED WITH COMMERCIAL QUALITY ASPHALTUM PAINT AFTER TESTING AND ASSEMBLY OR GALVANIZED.
- THE MINIMUM PIPE SIZE IS 12". IF THE INLET DEPTH IS GREATER THAN 4', THE MINIMUM PIPE SIZE SHALL BE 15".
- THE MANHOLE FRAME AND COVER SHALL BE PER STANDARD DRAWING SD-9.


DATE: 5/27/2025		NOT TO SCALE	
REVISION	BY	APPROVED	DATE

CITY OF ELK GROVE - PUBLIC WORKS

**PRECAST DROP INLET  
TYPE J**

APPROVED BY: \_\_\_\_\_  
5-27-2025  
CITY ENGINEER DATE

DRAWING NUMBER  
**SD - 19.4**



### **38-5 STORM DRAIN INLET LATERALS**

Unless otherwise shown on the Plans or in the Special Provisions, storm drain inlet laterals shall be a minimum of twelve inches (12”) in diameter and materials for inlet laterals shall conform to the requirements of Section 50, “Construction Materials”, of these Specifications for each respective type and class of pipe. Connections of laterals to manholes and inlets shall be water and soil tight, and shall conform to Section 39, "Manholes", and Section 27-13, "Drop Inlets and Catch Basins”, of these Specifications.

All inlet laterals shall be inspected by lamping conforming to Section 38-9.05, "Lamping of Storm Drain Inlet Laterals", in this Section of these Specifications or television inspection. When the radius or length of the lateral exceeds thirty feet (30’), a television inspection is required conforming to Section 38-9.04, "Television Video Inspection (TVI) – Storm Drains", in this Section of these Specifications. Other proposed methods of inspection may be approved by the City.