

NOTE:

1. FOR 36" BOX TREES. STAGE WITH TWO 2" X 12' LONG SCHEDULE 40 GALVANIZED STEEL PIPES. PAINTED WITH TWO COATS OF DARK GREEN PAINT. TIE TREE WITH A METAL TWIST BRACE BOLTED TO THE STAKES OR OTHER APPROVED TREE TIE AS SPECIFIED.

DATE: 09/22/2017		NOT TO SCALE	
REVISION	BY	APPROVED	DATE


CITY OF ELK GROVE - PUBLIC WORKS

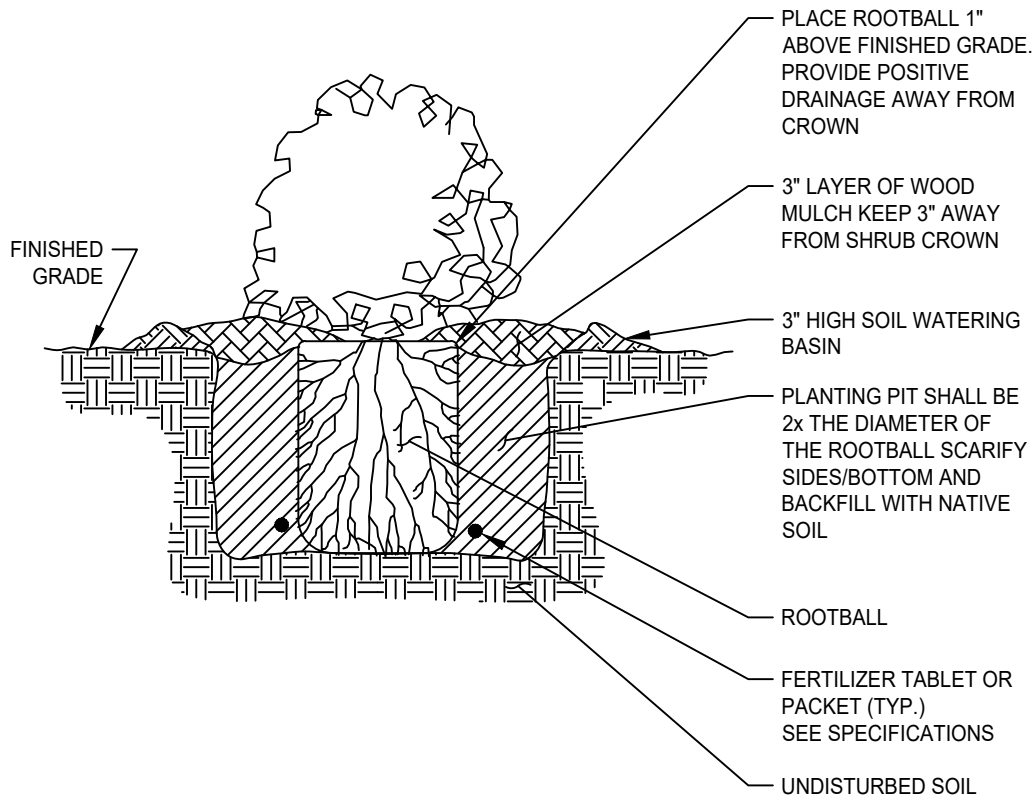
TREE PLANTING

APPROVED BY:
Paul Muroch
CITY ENGINEER

10/24/2018
DATE

DRAWING NUMBER
L - 1





DATE: 09/22/2017		NOT TO SCALE	
REVISION	BY	APPROVED	DATE

CITY OF ELK GROVE - PUBLIC WORKS

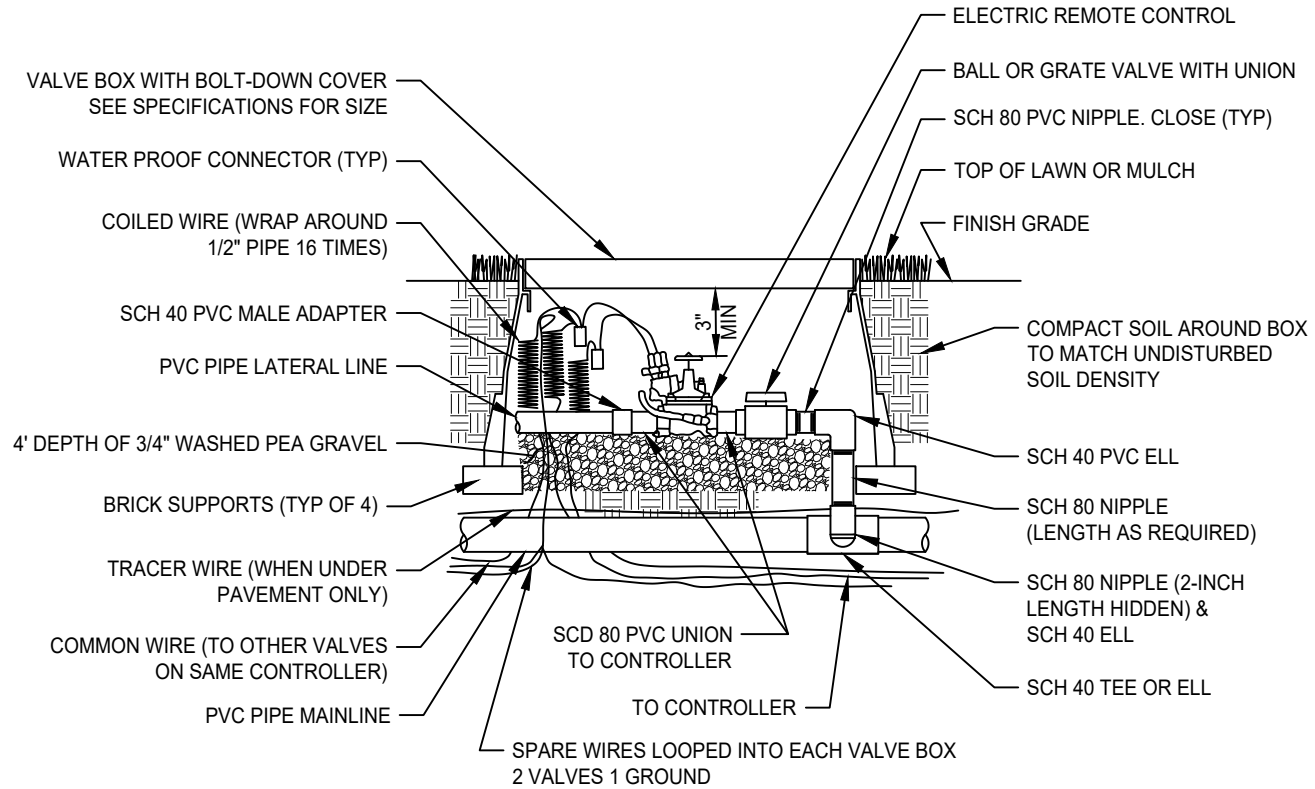
APPROVED BY:
Paul Murock
 CITY ENGINEER
 10/24/2018
 DATE

SHRUB PLANTING



DRAWING NUMBER

L - 2



NOTES:

1. ALL WIRE SHALL BE TAPED AND BUNDLED EVERY TEN FEET AND SHALL BE INSTALLED AS PER LOCAL CODE.
2. SHUT-OFF VALVES 3" AND SMALLER SHALL BE SCH. 80 BALL VALVES. VALVES LARGER THAN 3" SHALL BE BRASS GATE VALVES.
3. ALL VALVE BOXES AND LIDS WITHIN THE SIDEWALK SHALL BE OF TRAFFIC RATED QUALITY.

DATE: 09/22/2007		NOT TO SCALE	
REVISION	BY	APPROVED	DATE

CITY OF ELK GROVE - PUBLIC WORKS

REMOTE CONTROL VALVE

APPROVED BY:

Paul M. Muelich

10/24/2018

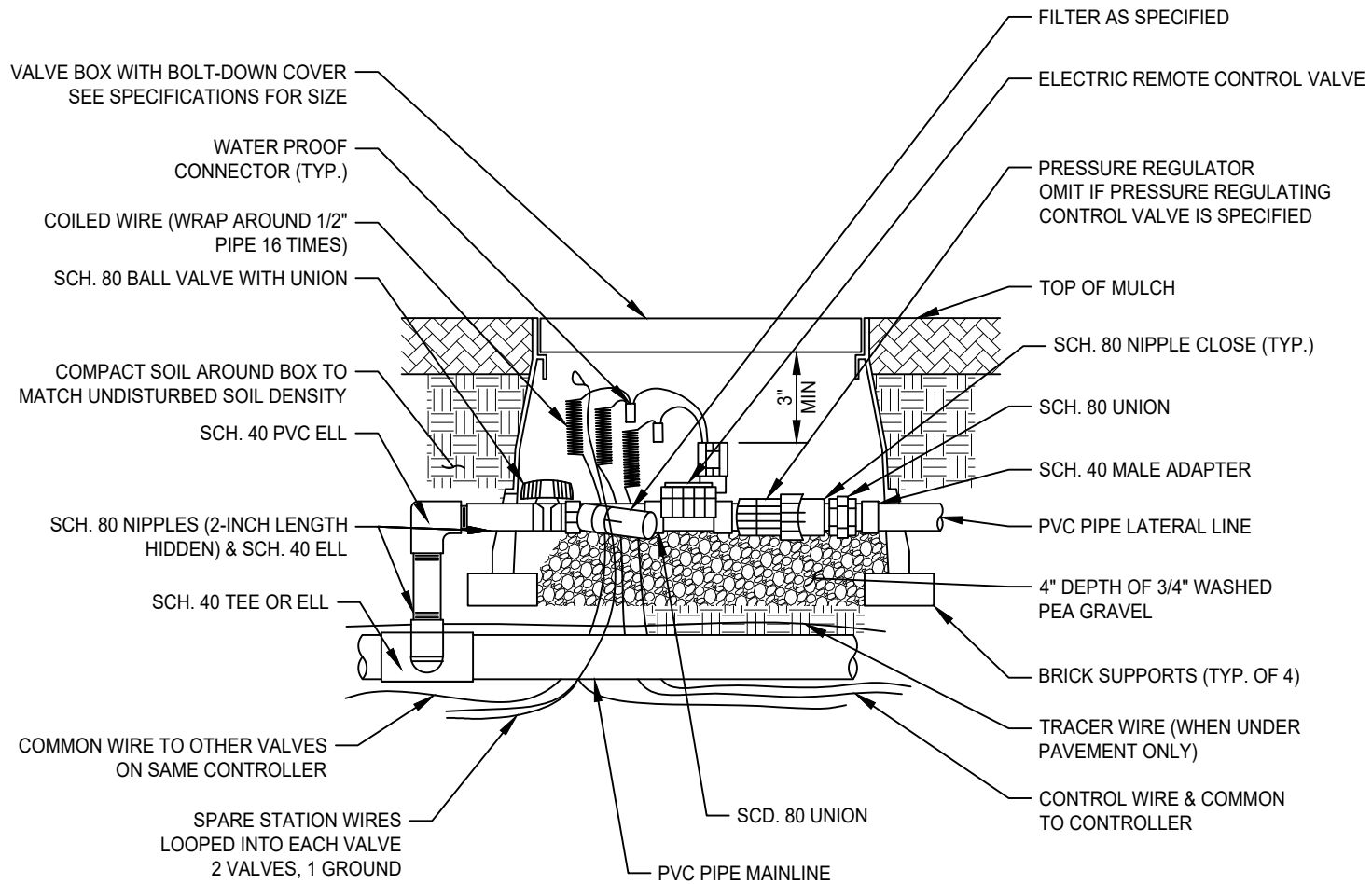
CITY ENGINEER

DATE



DRAWING NUMBER

L - 3



NOTES:

1. ALL WIRE SHALL BE TAPED AND BUNDLED EVERY TEN FEET AND SHALL BE INSTALLED AS PER LOCAL CODE.
2. ALL VALVE BOXES AND LIDS WITHIN THE SIDEWALK SHALL BE OF TRAFFIC RATED QUALITY.

DATE: 09/22/2007		NOT TO SCALE	
REVISION	BY	APPROVED	DATE

CITY OF ELK GROVE - PUBLIC WORKS

**DRIP IRRIGATION
VALVE ASSEMBLY**

APPROVED BY:

Paul Murock

CITY ENGINEER

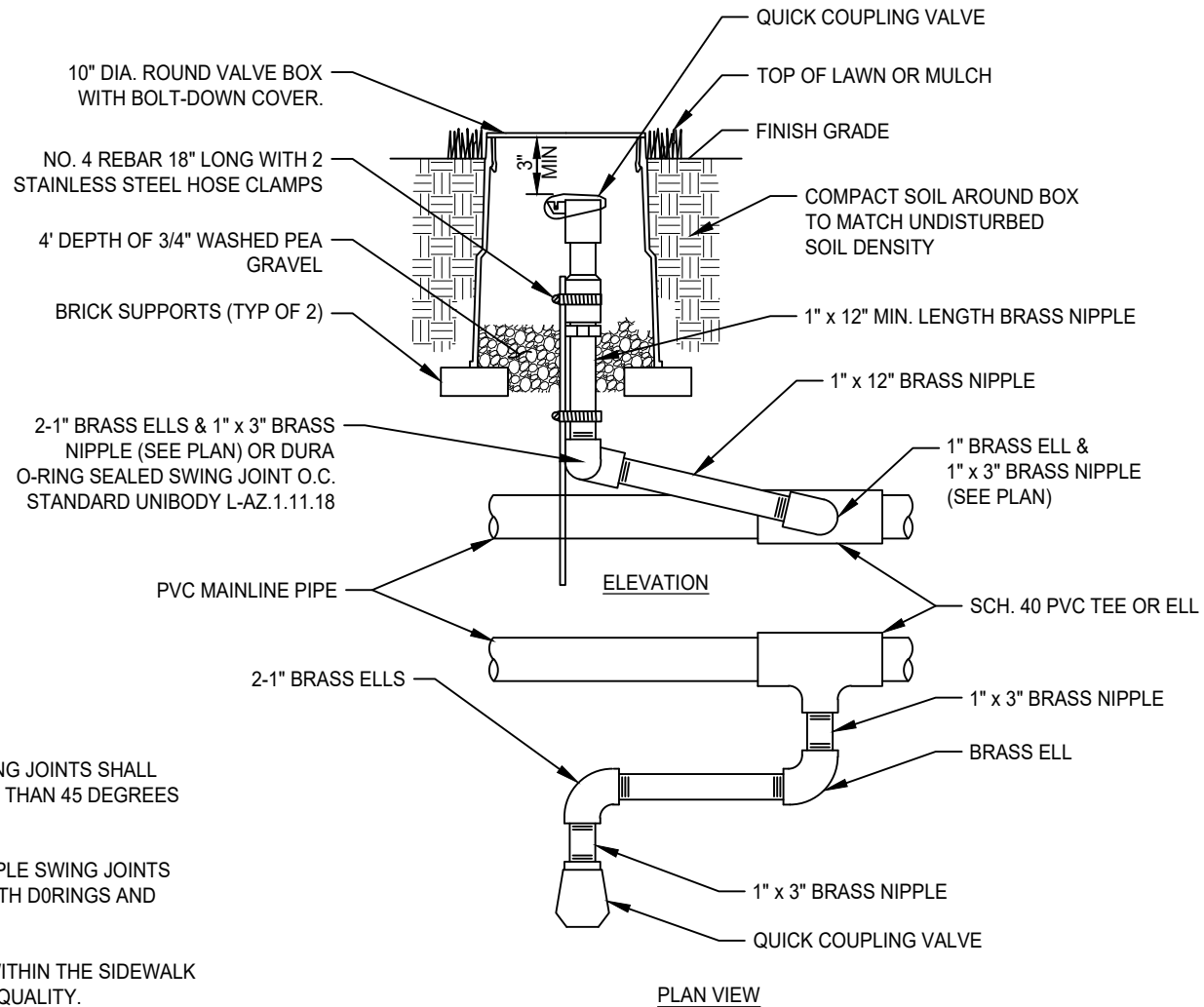
10/24/2018

DATE



DRAWING NUMBER

L - 4



NOTES:

1. INSTALLATION OF TRIPLE SWING JOINTS SHALL BE AT AN ANGLE NO GREATER THAN 45 DEGREES TO HORIZONTAL
2. ALL PRE-MANUFACTURED TRIPLE SWING JOINTS SHALL BE MANUFACTURED WITH O-RINGS AND SHALL BE RATED AT 200 PSI.
3. ALL VALVE BOXES AND LIDS WITHIN THE SIDEWALK SHALL BE OF TRAFFIC RATED QUALITY.

DATE: 09/22/2007		NOT TO SCALE	
REVISION	BY	APPROVED	DATE

CITY OF ELK GROVE - PUBLIC WORKS

APPROVED BY:

Paul M. Mudgett

10/24/2018

CITY ENGINEER

DATE

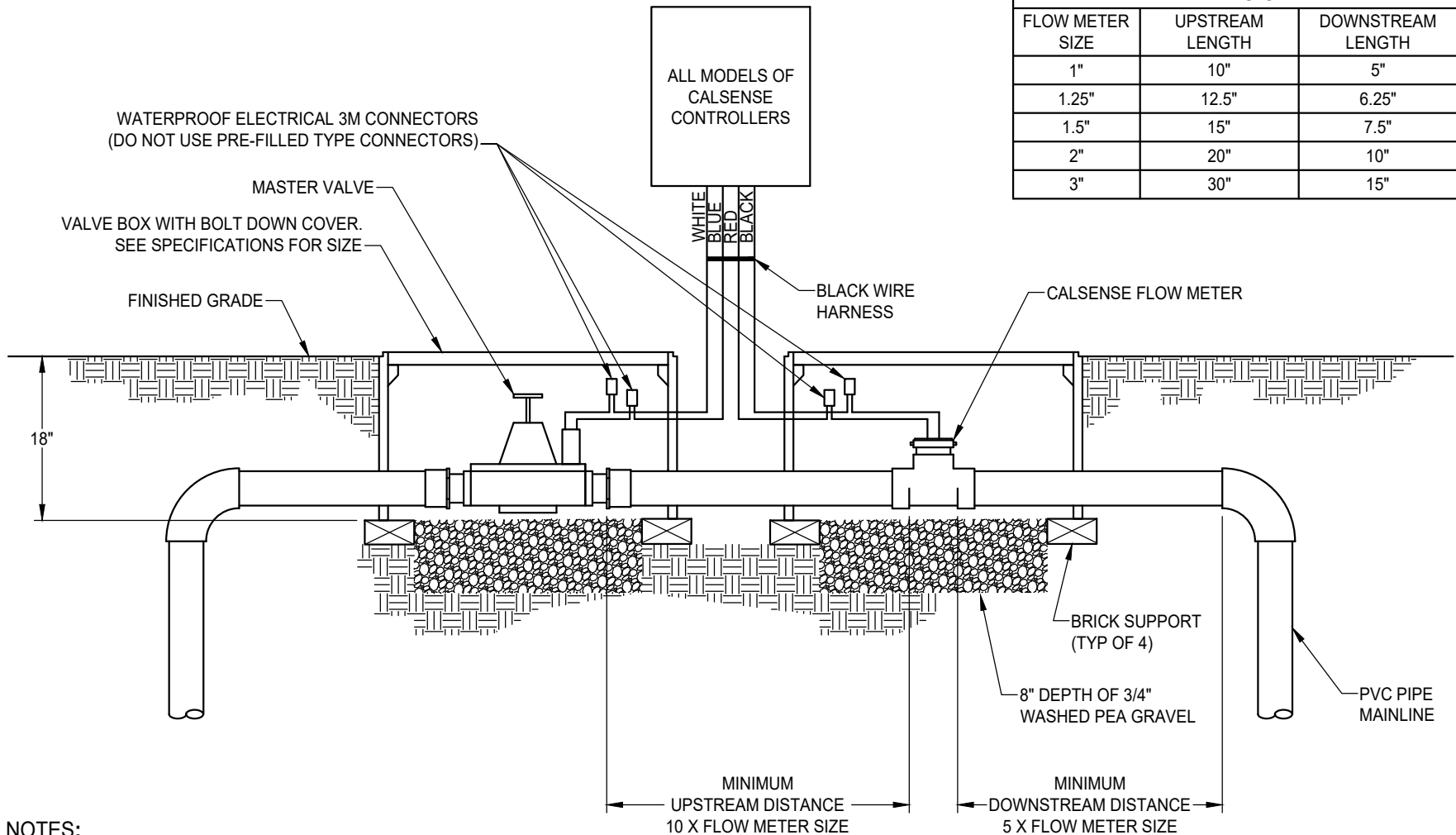
QUICK COUPLING VALVE



DRAWING NUMBER

L - 5

PIPE SIZING CHART		
FLOW METER SIZE	UPSTREAM LENGTH	DOWNSTREAM LENGTH
1"	10"	5"
1.25"	12.5"	6.25"
1.5"	15"	7.5"
2"	20"	10"
3"	30"	15"



NOTES:

1. ALL VALVE BOXES AND LIDS WITHIN THE SIDEWALK AREA SHALL BE TRAFFIC RATED QUALITY.

DATE: 09/22/2007		NOT TO SCALE	
REVISION	BY	APPROVED	DATE


CITY OF ELK GROVE - PUBLIC WORKS

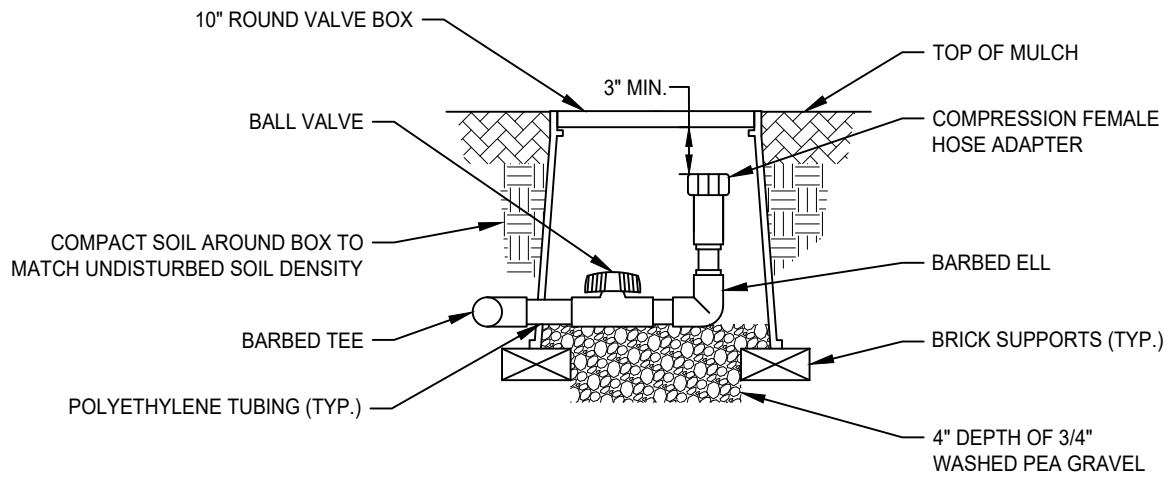
**MASTER VALVE
FLOW SENSOR**

APPROVED BY:
Paul Murock
CITY ENGINEER

10/24/2018
DATE

DRAWING NUMBER
L - 6





NOTES:

1. ALL VALVE BOXES AND LIDS WITHIN THE SIDEWALK AREA SHALL BE OF TRAFFIC RATED QUALITY.

DATE: 09/22/2007		NOT TO SCALE	
REVISION	BY	APPROVED	DATE


CITY OF ELK GROVE - PUBLIC WORKS

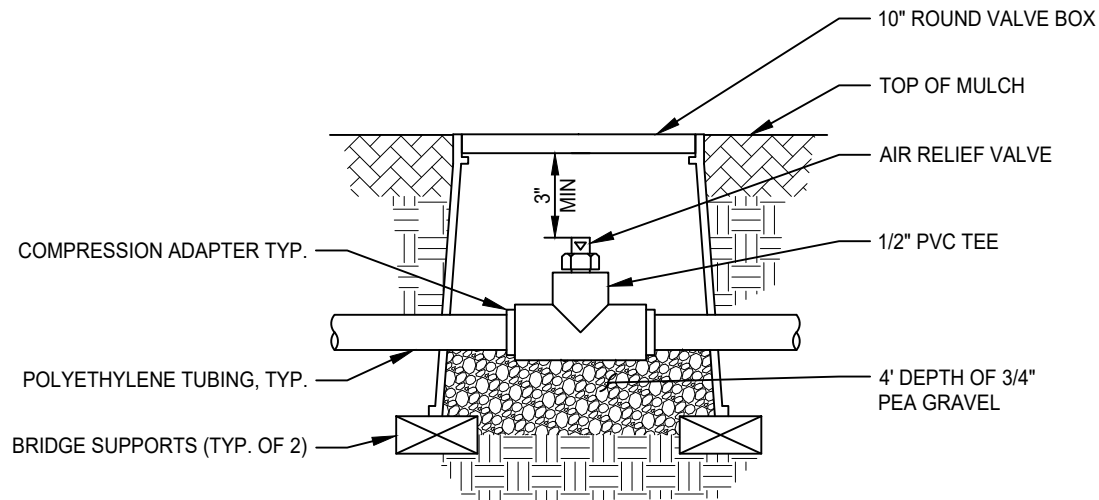
FLUSH VALVE

APPROVED BY:
Paul Murock
CITY ENGINEER

10/24/2018
DATE

DRAWING NUMBER
L - 7





NOTES:

1. AIR RELIEF VALVE SHALL BE INSTALLED AT THE HIGHEST POINT OF THE SYSTEM ABOVE ALL DRIPLINE LATERALS.
2. ALL VALVE BOXES AND LIDS WITHIN THE SIDEWALK SHALL BE OF TRAFFIC RATED QUALITY.

DATE: 09/22/2007		NOT TO SCALE	
REVISION	BY	APPROVED	DATE

CITY OF ELK GROVE - PUBLIC WORKS

AIR RELIEF VALVE

APPROVED BY:

Paul Murock

CITY ENGINEER

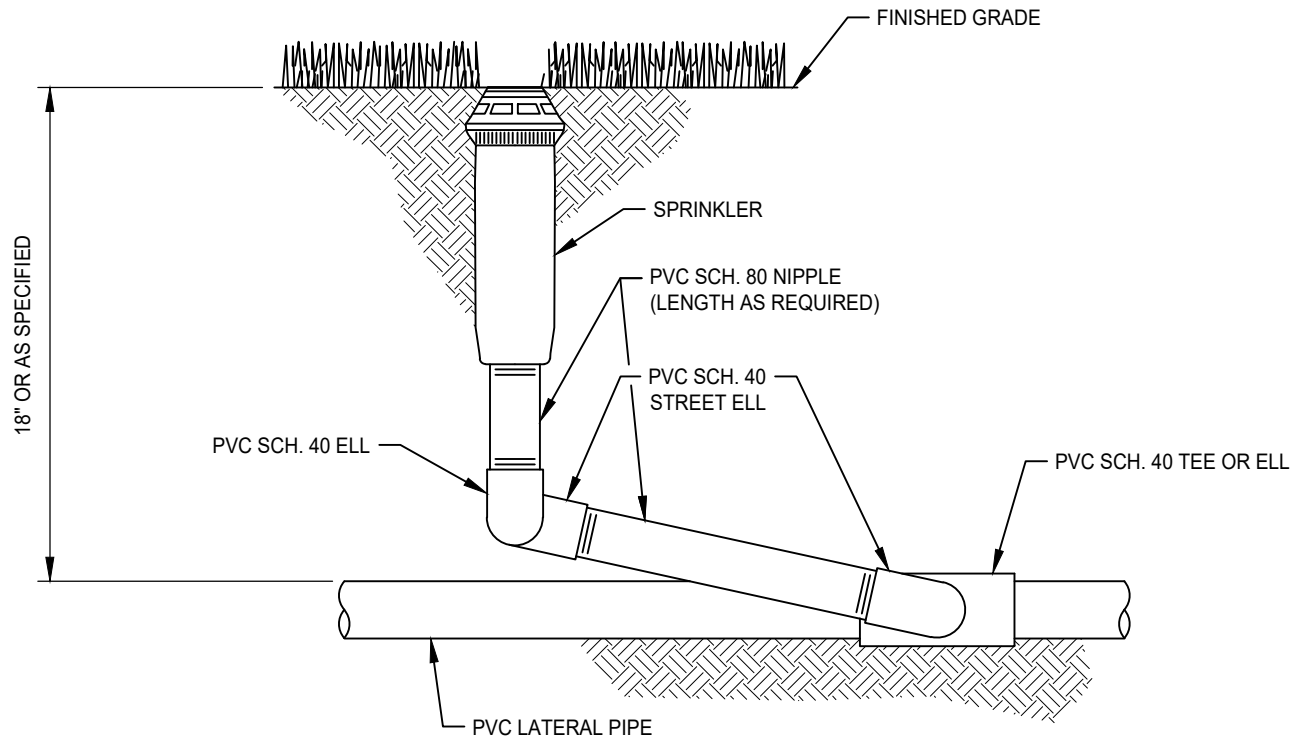
10/24/2018

DATE



DRAWING NUMBER

L - 8



NOTES:

1. INSTALLATION OF TRIPLE SWING JOINTS SHALL BE AT AN ANGLE NO GREATER THAN 45 DEGREES TO HORIZONTAL.
2. ALL PRE-MANUFACTURED TRIPLE SWING JOINTS SHALL BE MANUFACTURED WITH O-RINGS AND SHALL BE RATED AT 200 PSI.

DATE: 09/22/2007		NOT TO SCALE	
REVISION	BY	APPROVED	DATE

CITY OF ELK GROVE - PUBLIC WORKS

POP-UP ROTOR SPRINKLER

APPROVED BY:

Paul Murock

CITY ENGINEER

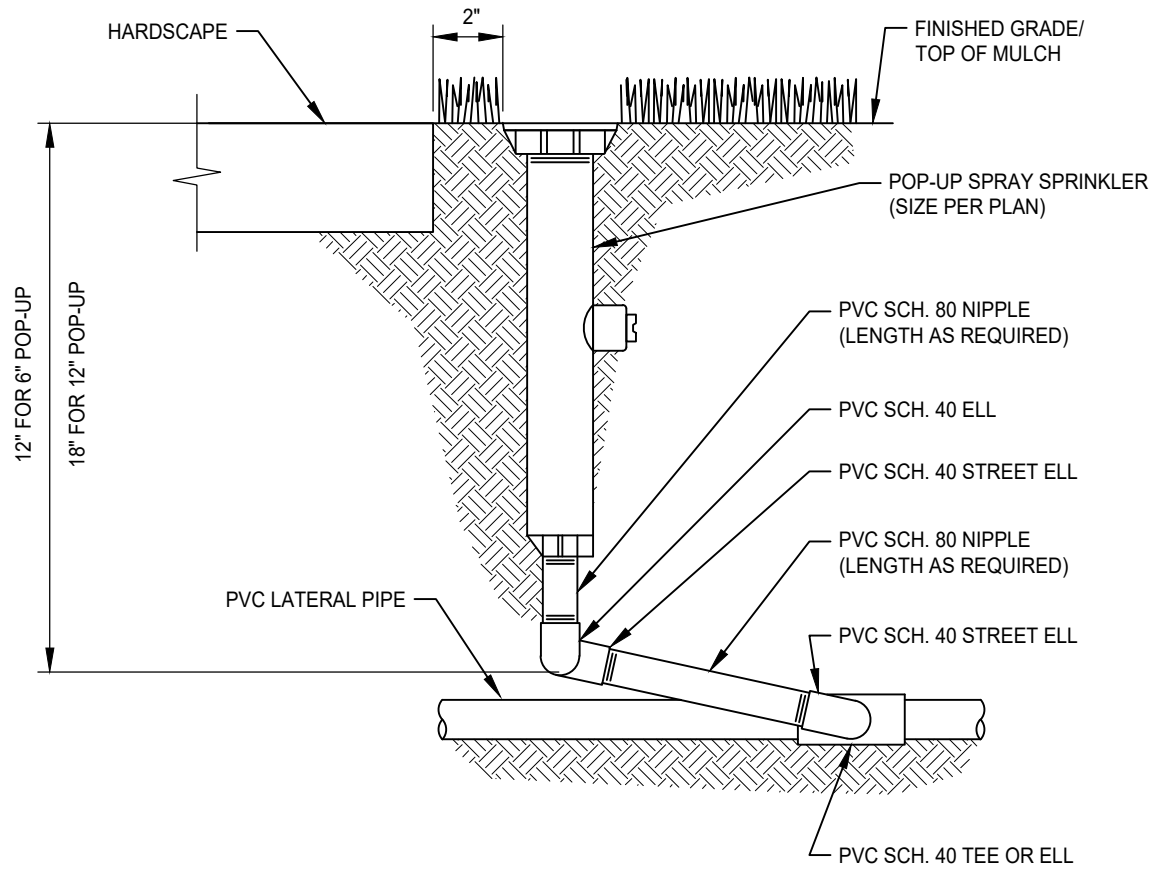
10/24/2018

DATE



DRAWING NUMBER

L - 9



NOTES:

1. INSTALLATION OF TRIPLE SWING JOINTS SHALL BE AT AN ANGLE NO GREATER THAN 45 DEGREES TO HORIZONTAL.
2. ALL PRE-MANUFACTURED TRIPLE SWING JOINTS SHALL BE MANUFACTURED WITH O-RINGS AND SHALL BE RATED AT 200 PSI.

DATE: 09/22/2007		NOT TO SCALE	
REVISION	BY	APPROVED	DATE

CITY OF ELK GROVE - PUBLIC WORKS

POP-UP SPRAY SPRINKLER

APPROVED BY:

Paul Murock

CITY ENGINEER

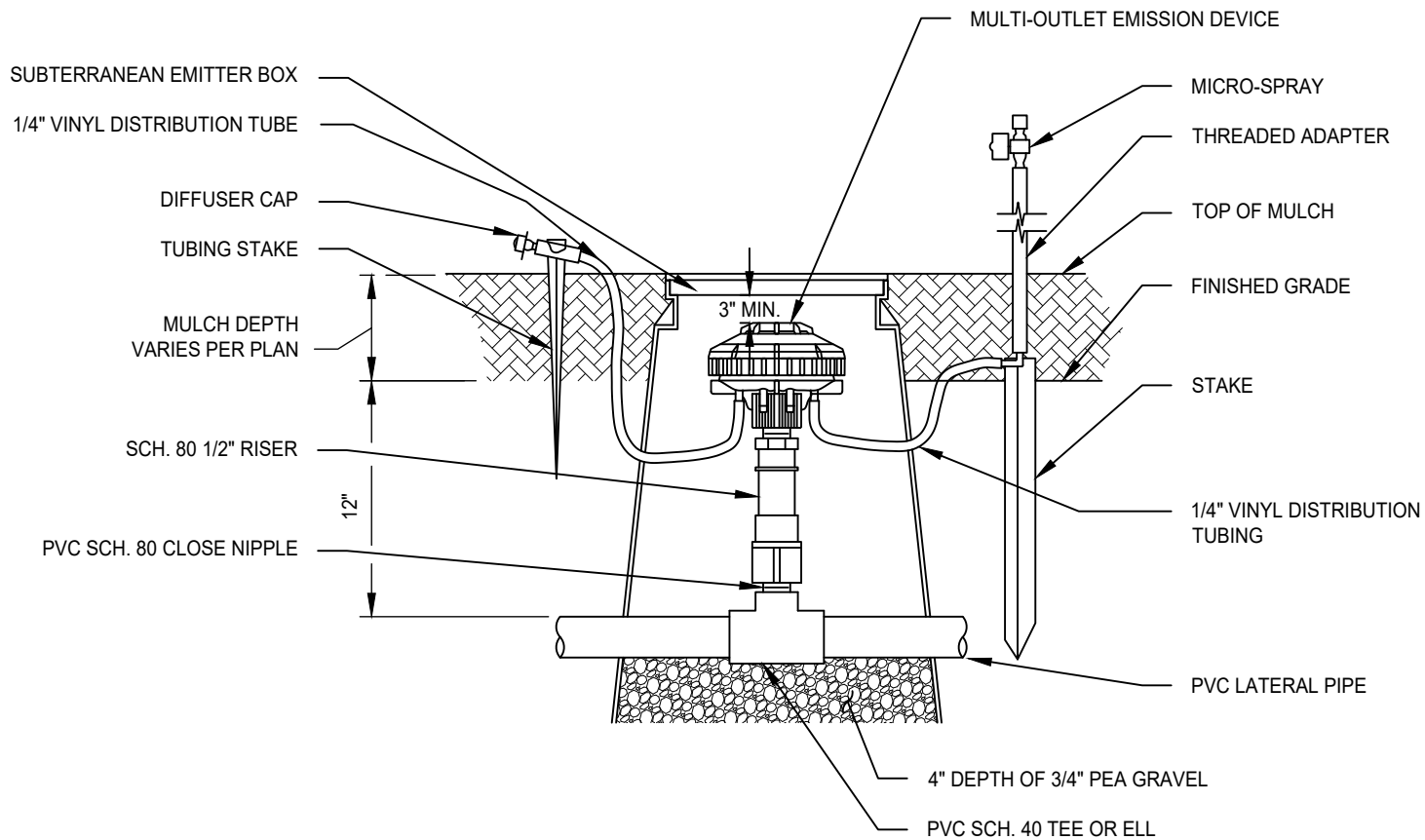
10/24/2018

DATE



DRAWING NUMBER

L - 10



DATE: 09/22/2007		NOT TO SCALE	
REVISION	BY	APPROVED	DATE

CITY OF ELK GROVE - PUBLIC WORKS

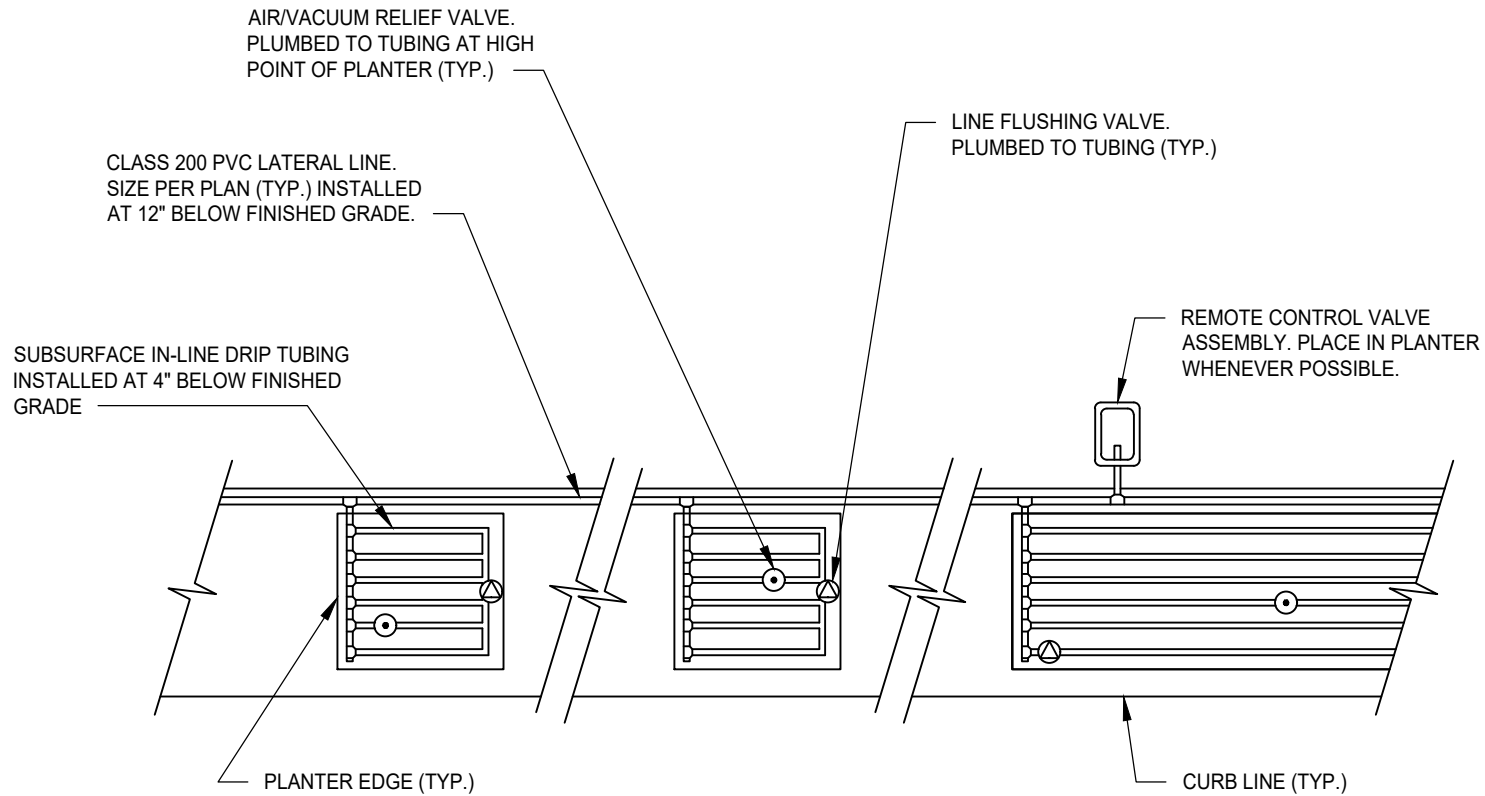
**DRIP IRRIGATION
MULTI-OUTLET EMITTER**

APPROVED BY:
Paul Murock
CITY ENGINEER 10/24/2018
DATE



DRAWING NUMBER

L - 12



NOTES:

1. ALL DRIP TUBING FITTINGS SHALL BE BARBED.

DATE: 09/22/2007		NOT TO SCALE	
REVISION	BY	APPROVED	DATE

CITY OF ELK GROVE - PUBLIC WORKS

**SUBSURFACE IN-LINE
DRIP IRRIGATION LAYOUT**

APPROVED BY:

Paul Murock

CITY ENGINEER

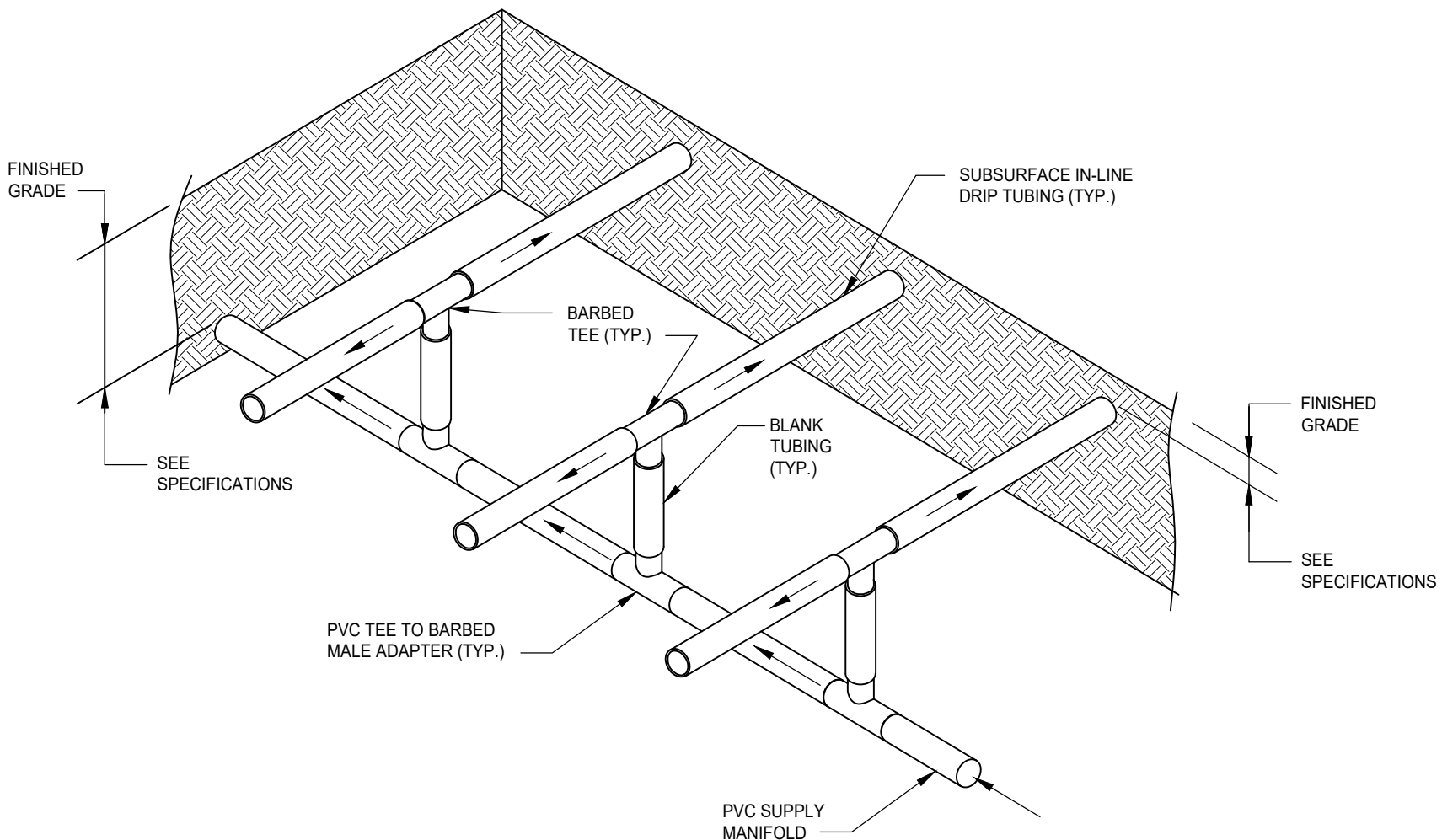
10/24/2018

DATE



DRAWING NUMBER

L - 13



DATE: 09/22/2007		NOT TO SCALE	
REVISION	BY	APPROVED	DATE

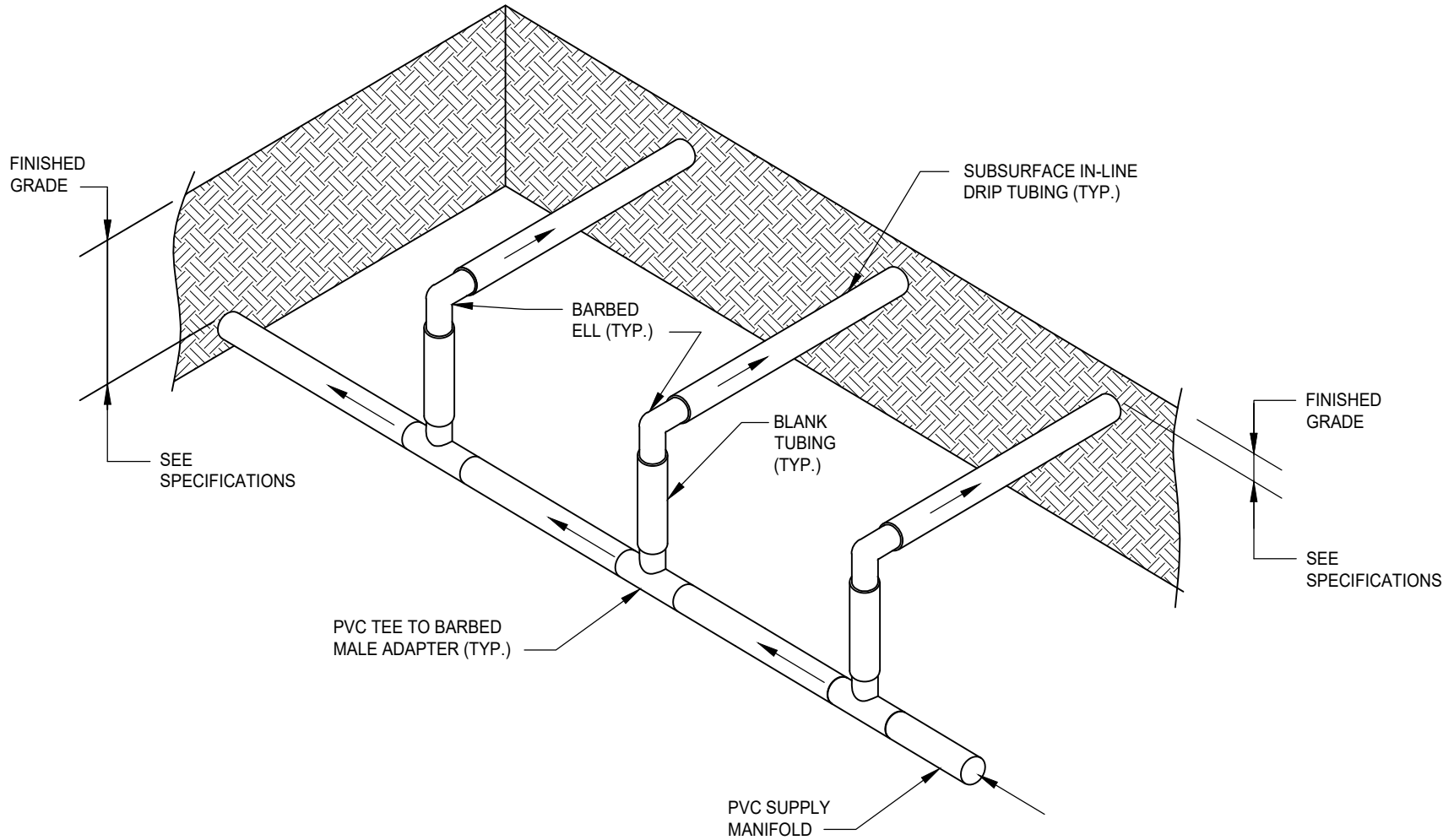
CITY OF ELK GROVE - PUBLIC WORKS

**SUBSURFACE IN-LINE DRIP
IRRIGATION CENTER-FEED
SUPPLY MANIFOLD**

APPROVED BY:
Paul Murock
CITY ENGINEER 10/24/2018
DATE



DRAWING NUMBER
L - 14



DATE: 09/22/2007		NOT TO SCALE	
REVISION	BY	APPROVED	DATE


CITY OF ELK GROVE - PUBLIC WORKS

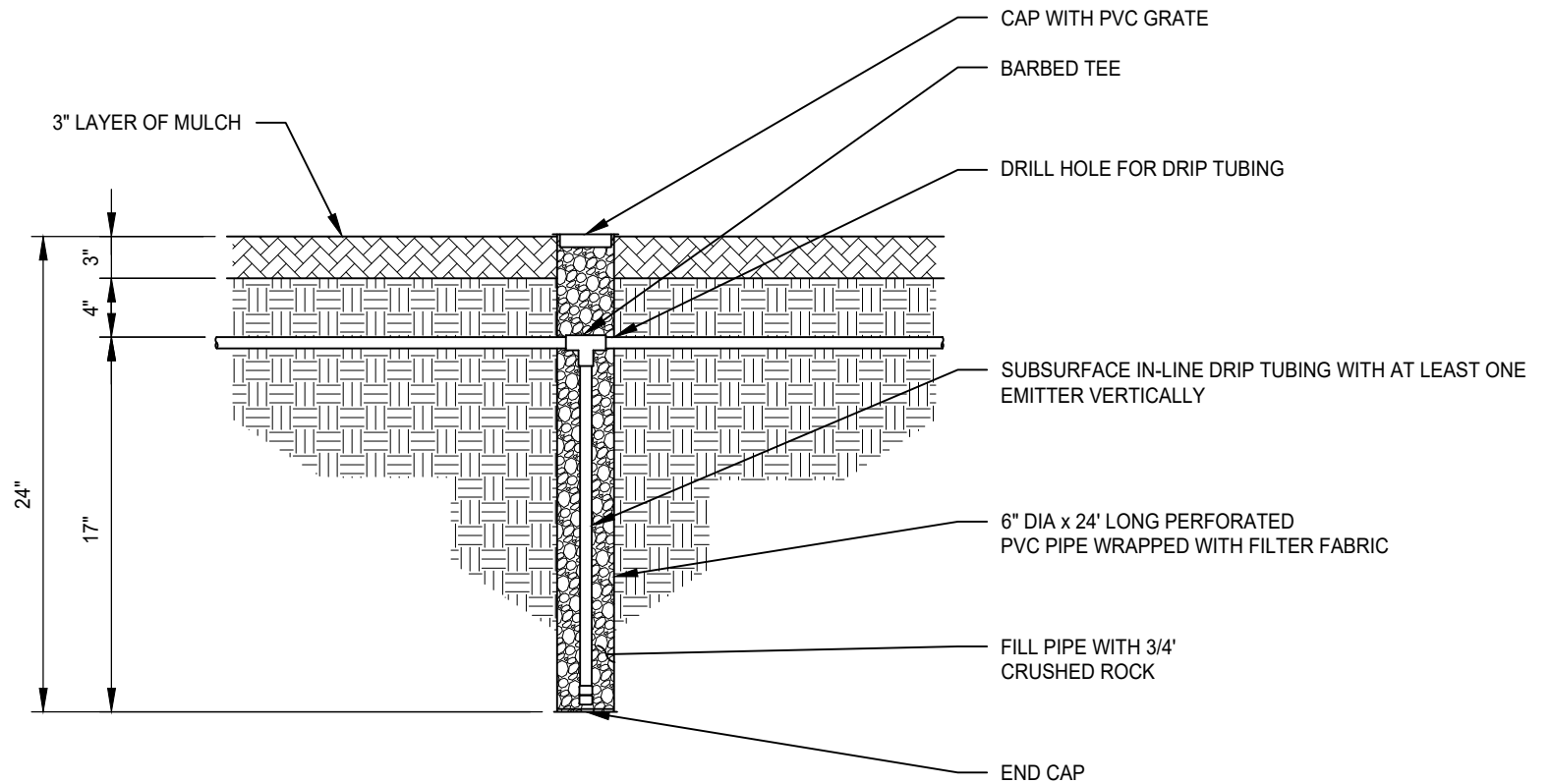
**SUBSURFACE IN-LINE DRIP
IRRIGATION END-FEED
SUPPLY MANIFOLD**

APPROVED BY:
Paul Murock
CITY ENGINEER

10/24/2018
DATE

DRAWING NUMBER
L - 15





DATE: 09/22/2007		NOT TO SCALE	
REVISION	BY	APPROVED	DATE

CITY OF ELK GROVE - PUBLIC WORKS

**DEEP WATERING PIPE
FOR TREES**

APPROVED BY:

Paul Murock

CITY ENGINEER

10/24/2018

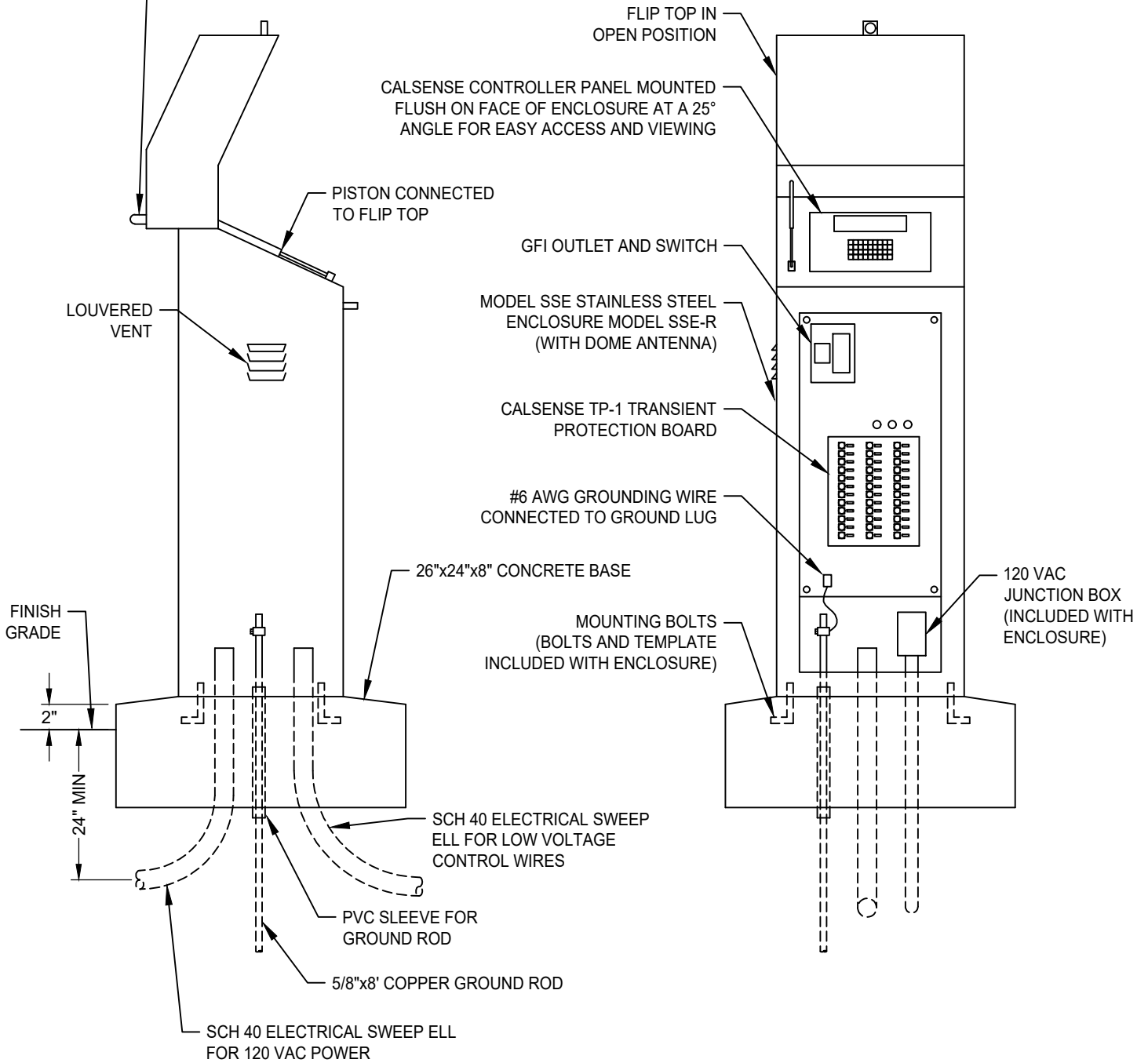
DATE



DRAWING NUMBER

L - 16

OPTIONAL DOME ANTENNA
 MODEL ANT-1 (DIGITAL RADIO)
 MODEL ANT-1-RR (DIGITAL RADION AND RR RADIO REMOTE OPTION)
 MODEL LR-DOME (LOCAL RADIO)
 MODEL LR-DOME-RR (LOCAL RADIO AND RR RADIO REMOTE OPTION)
 MODEL RR-DOME (RADIO REMOTE OPTION)



DATE: 09/22/2017		NOT TO SCALE	
REVISION	BY	APPROVED	DATE

CITY OF ELK GROVE - PUBLIC WORKS

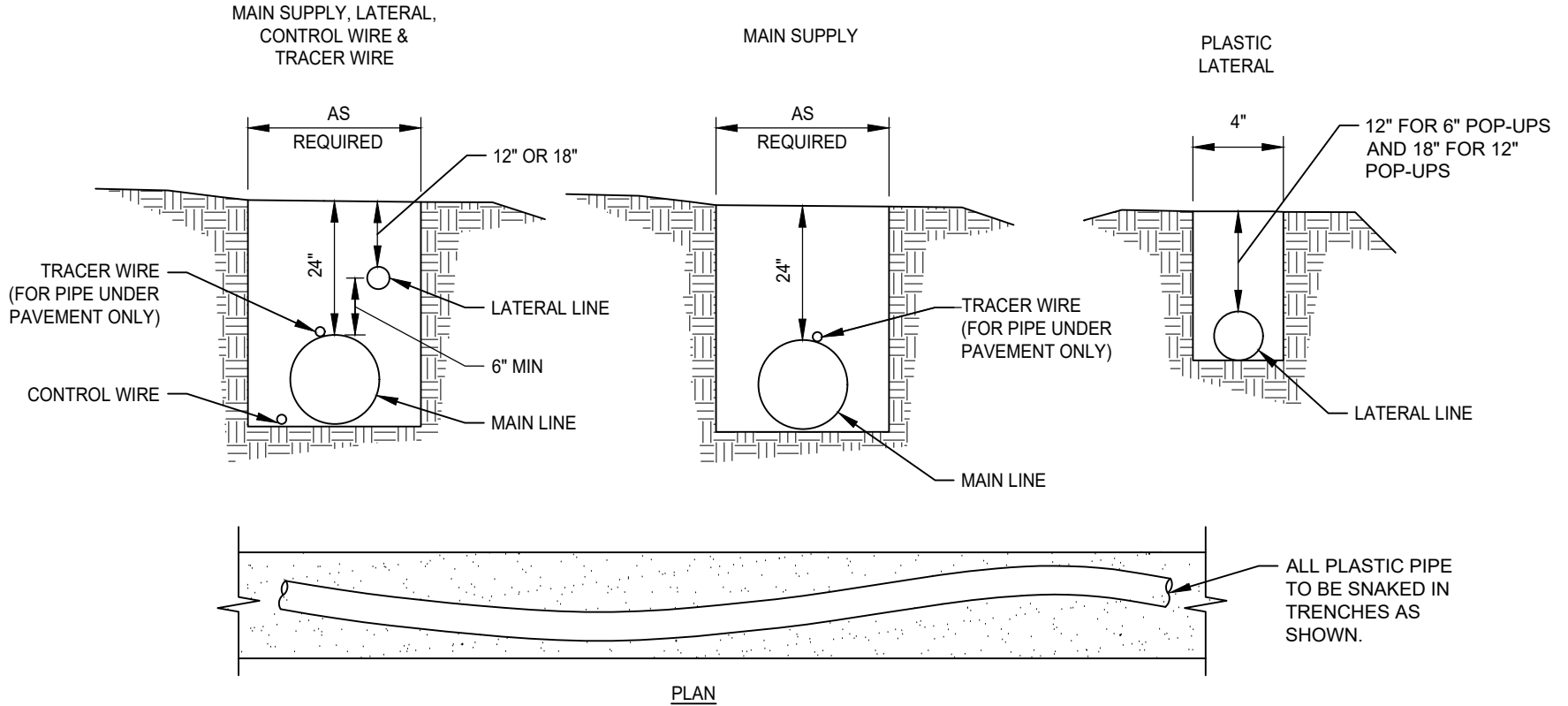
APPROVED BY:
Paul Murock
 10/24/2018
 CITY ENGINEER DATE

IRRIGATION CONTROLLER ENCLOSURE



DRAWING NUMBER

L - 17



NOTES:

1. ALL TRENCH DEPTHS ARE MEASURED FROM TOP OF FINISH GRADE.
2. TRACER WIRE SHALL BE REQUIRED ONLY WHEN PIPES ARE INSTALLED UNDER PAVEMENT.
3. ALL PIPE TO BE INSTALLED IN ACCORDANCE WITH MANUFACTURERS INSTALLATION SPECIFICATIONS.
4. IF SPRINKLER HEAD AND NIPPLE HEIGHT EXCEED 11" LATERAL LINE DEPTH SHALL BE 18".
5. INSTALL PIPE BEDDING UNDER PIPING, WHEN SPECIFIED.
6. INSTALL SLEEVING UNDER PAVING PER PLANS.

DATE: 09/22/2007		NOT TO SCALE	
REVISION	BY	APPROVED	DATE


CITY OF ELK GROVE - PUBLIC WORKS

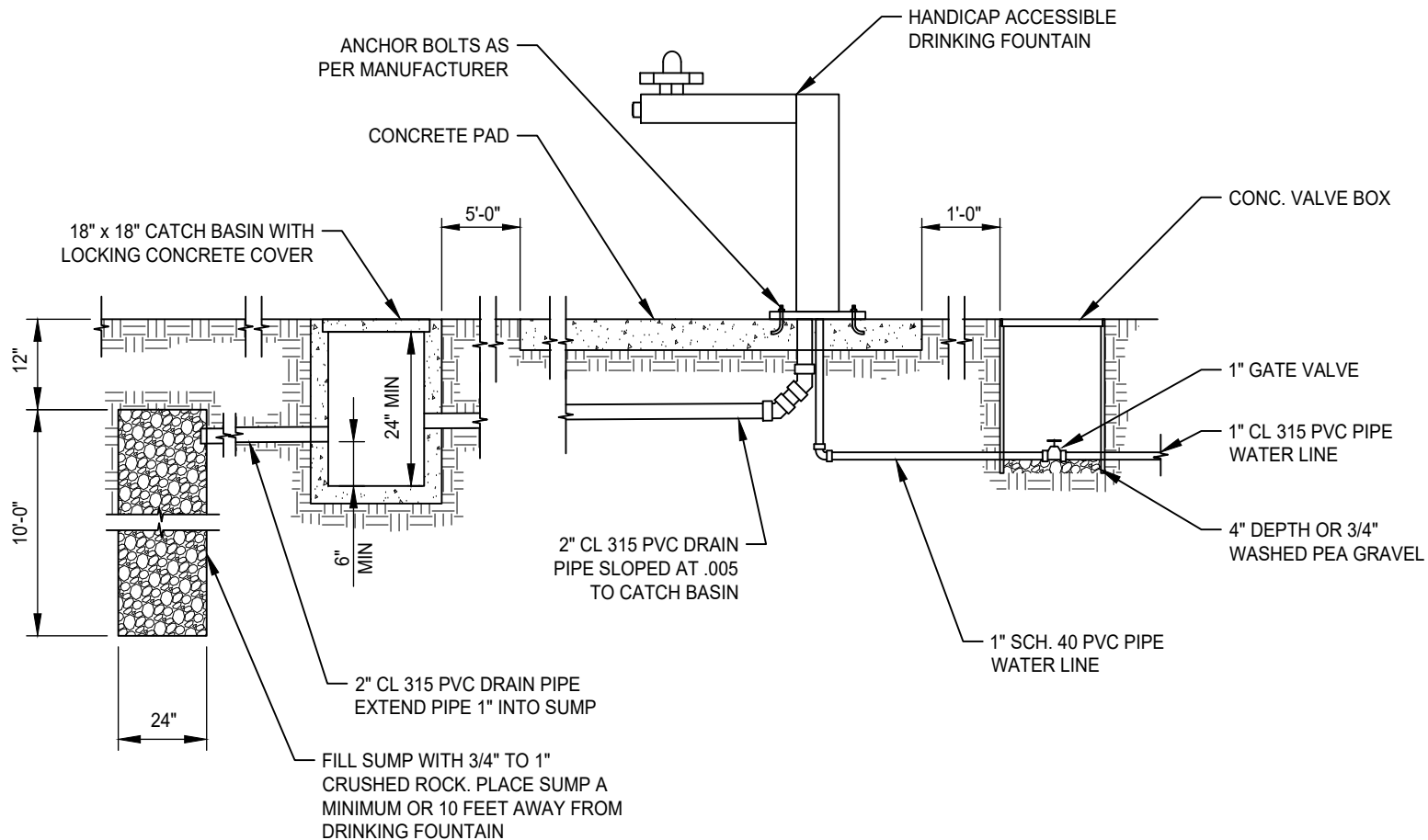
**IRRIGATION SYSTEM
TRENCHING**

APPROVED BY:
Paul Murock
CITY ENGINEER

10/24/2018
DATE

DRAWING NUMBER
L - 18






DATE: 09/22/2007		NOT TO SCALE	
REVISION	BY	APPROVED	DATE


CITY OF ELK GROVE - PUBLIC WORKS

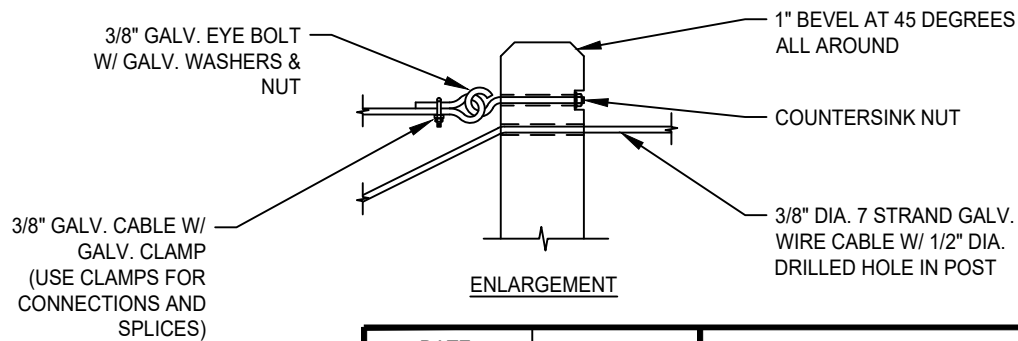
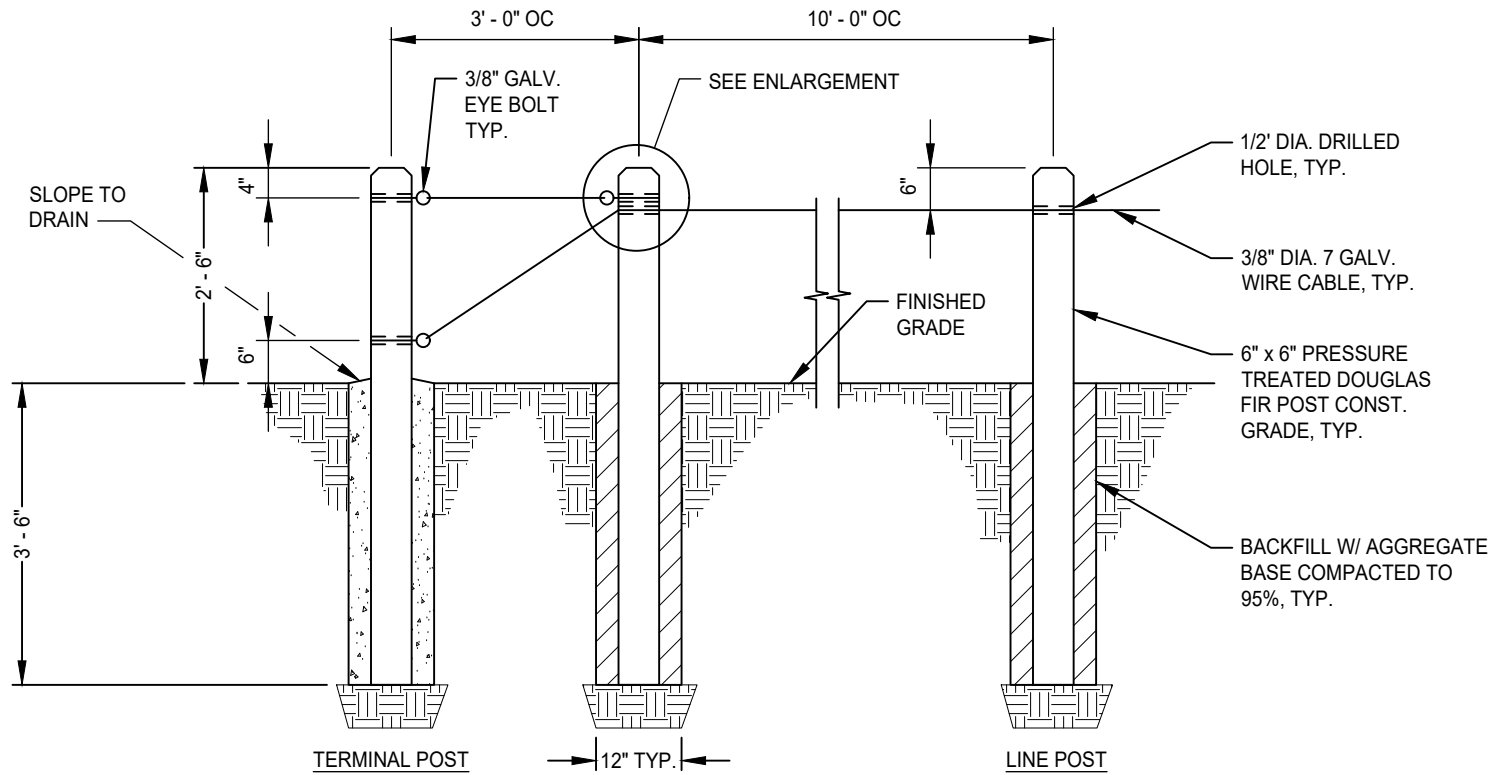
DRINKING FOUNTAIN

APPROVED BY:

 CITY ENGINEER

10/24/2018
 DATE

DRAWING NUMBER
L - 19





NOTES:

1. CONCRETE FOOTING SHALL BE INSTALLED AT ALL TERMINAL POSTS AND AT ALL BENDS.

DATE: 09/22/2007		NOT TO SCALE	
REVISION	BY	APPROVED	DATE
1	SJB	SMA	06-18-2025

CITY OF ELK GROVE - PUBLIC WORKS

POST AND CABLE FENCING

APPROVED BY:

[Signature] 06-20-2025

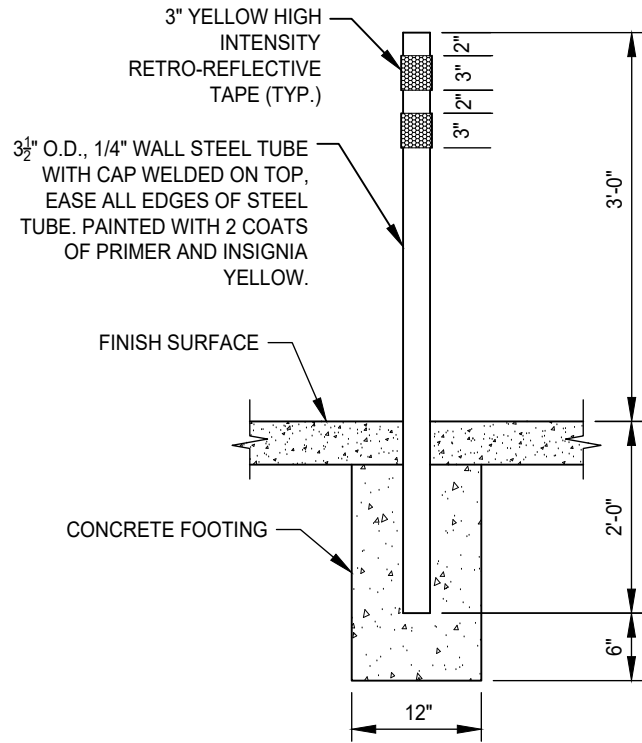
CITY ENGINEER

DATE

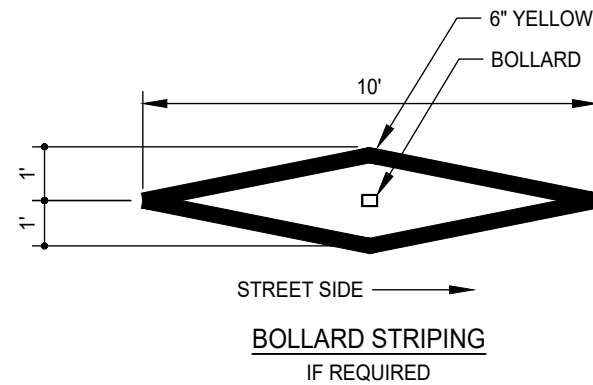


DRAWING NUMBER

L - 20



STATIONARY BOLLARD



DATE: 09/22/2007		NOT TO SCALE	
REVISION	BY	APPROVED	DATE
1	SJB	SMA	05-01-2025

CITY OF ELK GROVE - PUBLIC WORKS

APPROVED BY:

[Signature] 05-28-2025

CITY ENGINEER

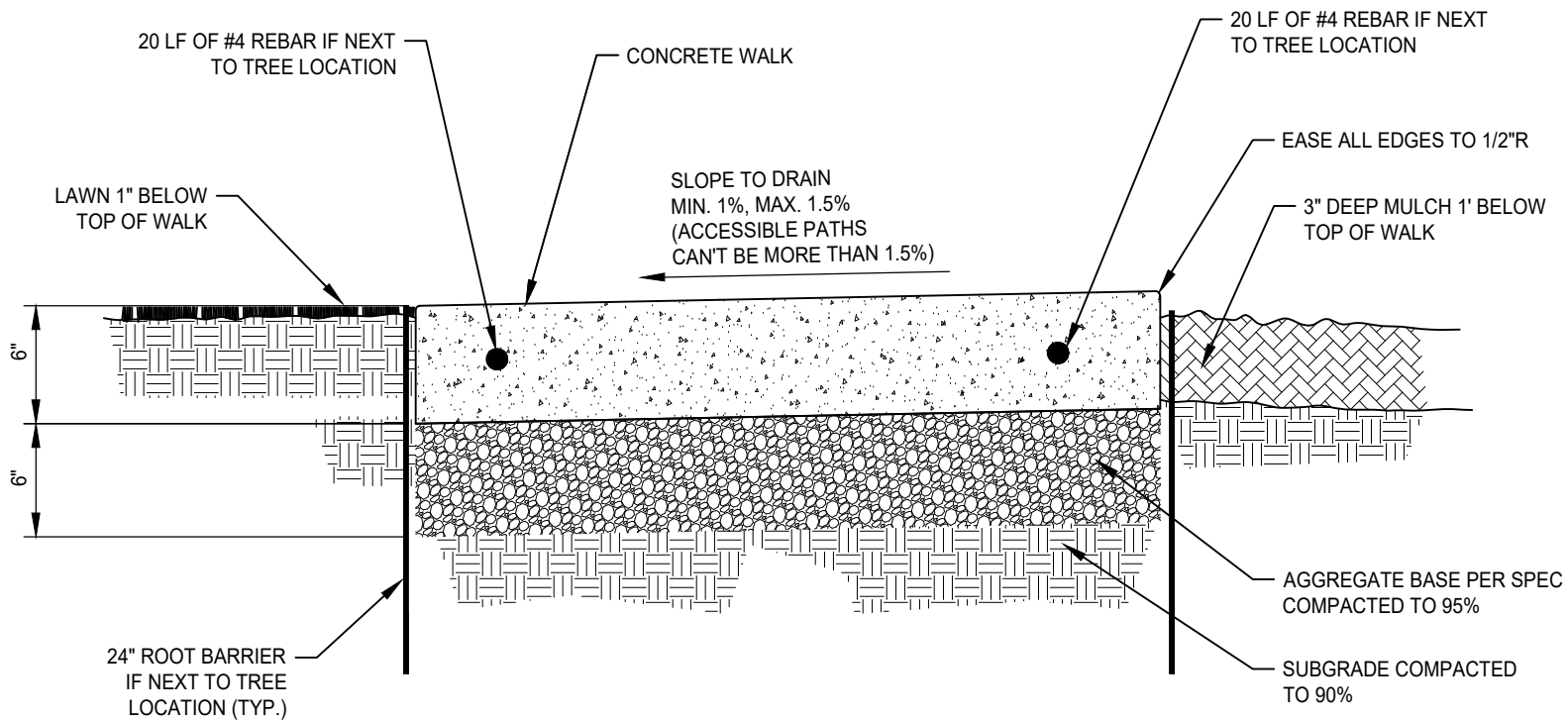
DATE

STATIONARY BOLLARD



DRAWING NUMBER

L - 21



NOTES:

1. PROVIDE 25% OF THICKNESS OR 1.5" DEEP SCORE JOINTS AT 10'-0" ON CENTER.
2. PROVIDE EXPANSION JOINTS AT 20'-0" INTERVALS.
3. CLASS "B" CONCRETE.
4. MEDIUM BROOM FINISH PERPENDICULAR TO WALK EDGE UNLESS OTHERWISE SPECIFIED.
5. PROVIDE FULL DEPTH FELT EXPANSION JOINTS WHEN ABUTTING WALKS, WALLS AND BUILDINGS.

DATE 09/22/2007		NOT TO SCALE	
REVISION	BY	APPROVED	DATE
01	KB	JRW	02/16/2021


CITY OF ELK GROVE - PUBLIC WORKS

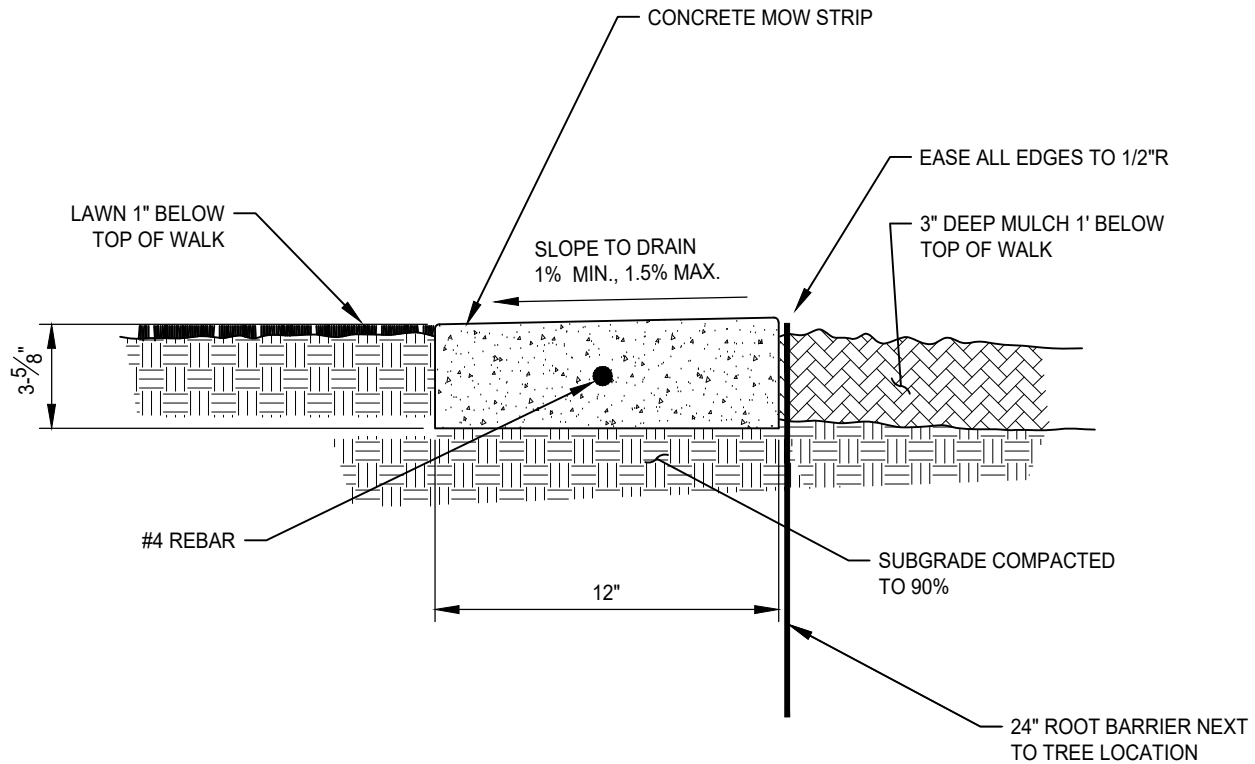
**CONCRETE WALK
(IN PARK AREAS, NOT FRONTAGE
AREAS)**

APPROVED BY:
Robert M. Mudgett
CITY ENGINEER

02/17/2021
DATE

DRAWING NUMBER
L - 23





NOTES:

1. PROVIDE 1" DEEP SCORE JOINTS AT 10'-0" ON CENTER.
2. PROVIDE EXPANSION JOINTS AT 20'-0" INTERVALS.
3. CLASS "B" CONCRETE.
4. MEDIUM BROOM FINISH UNLESS OTHERWISE SPECIFIED.
5. PROVIDE FULL DEPTH FELT EXPANSION JOINTS WHEN ABUTTING WALKS, WALLS AND BUILDINGS.

DATE: 09/22/2007		NOT TO SCALE	
REVISION	BY	APPROVED	DATE

CITY OF ELK GROVE - PUBLIC WORKS

CONCRETE MOW STRIP

APPROVED BY:

Paul Murock

CITY ENGINEER

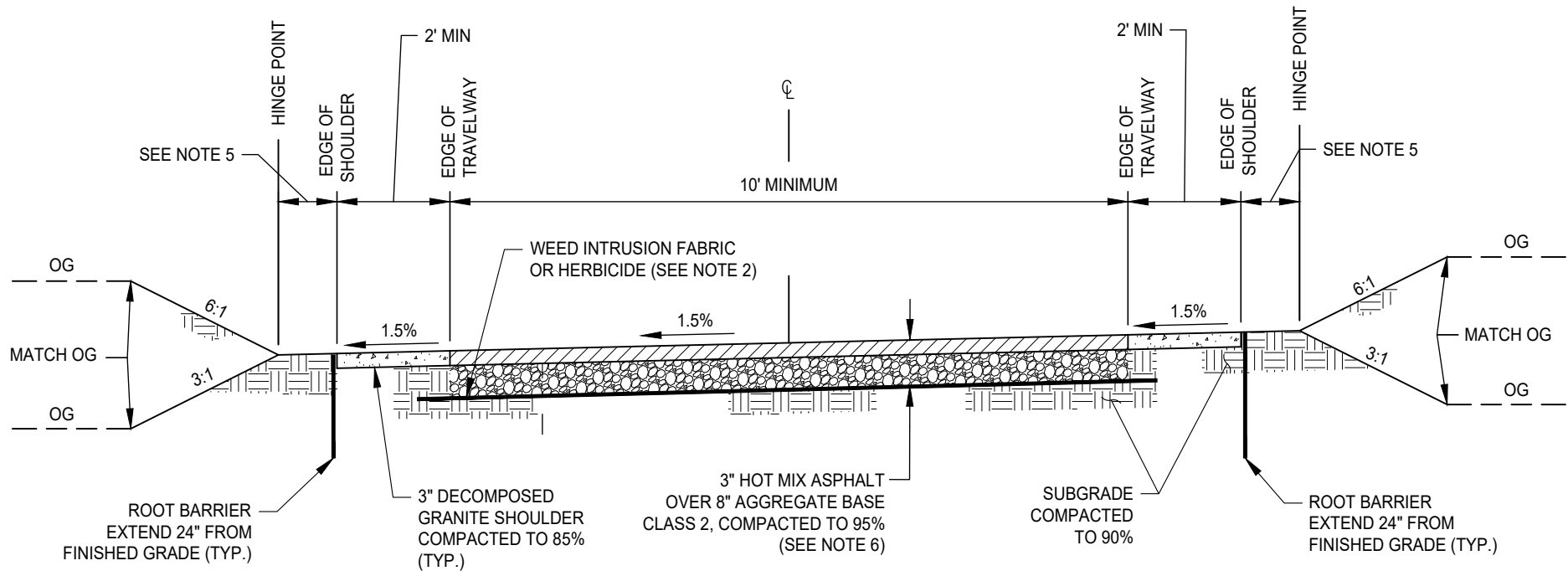
10/24/2018

DATE



DRAWING NUMBER

L - 24




NOTES:

1. APPLY PRE-EMERGENT HERBICIDE UNDER DECOMPOSED GRANITE PRIOR TO INSTALLING IT.
2. APPLY PRE-EMERGENT HERBICIDE OR WEED INTRUSION FABRIC TO AGGREGATE BASE PRIOR TO PAVING ASPHALT CONCRETE.
3. APPLY A 4" WIDE SOLID THERMOPLASTIC YELLOW CENTERLINE STRIPE CONTINUOUSLY DOWN THE CENTER OF THE BIKE TRAIL.
4. A MINIMUM 3-FOOT HORIZONTAL CLEARANCE FROM THE PAVED EDGE OF A BIKE PATH TO OBSTRUCTIONS SHALL BE PROVIDED.
5. FOR TRAILS PARALLEL AND ADJACENT TO CITY STREET, THE TRAIL EDGE OF TRAVELED WAY SHALL BE 5' MINIMUM FROM THE ROADWAY EDGE OF SHOULDER OR 5' MINIMUM FROM THE ROADWAY TOP FACE OF CURB, WHICHEVER IS GREATER.
6. A GEOTECHNICAL RECOMMENDATION IS REQUIRED FOR AN R-VALUE OF LESS THAN 50 TO PROVIDE A DESIGN LIFE OF 20 YEARS AND A TI OF 5.


DATE 09/22/2007		NOT TO SCALE	
REVISION	BY	APPROVED	DATE
01	KB	JRW	02/16/2021

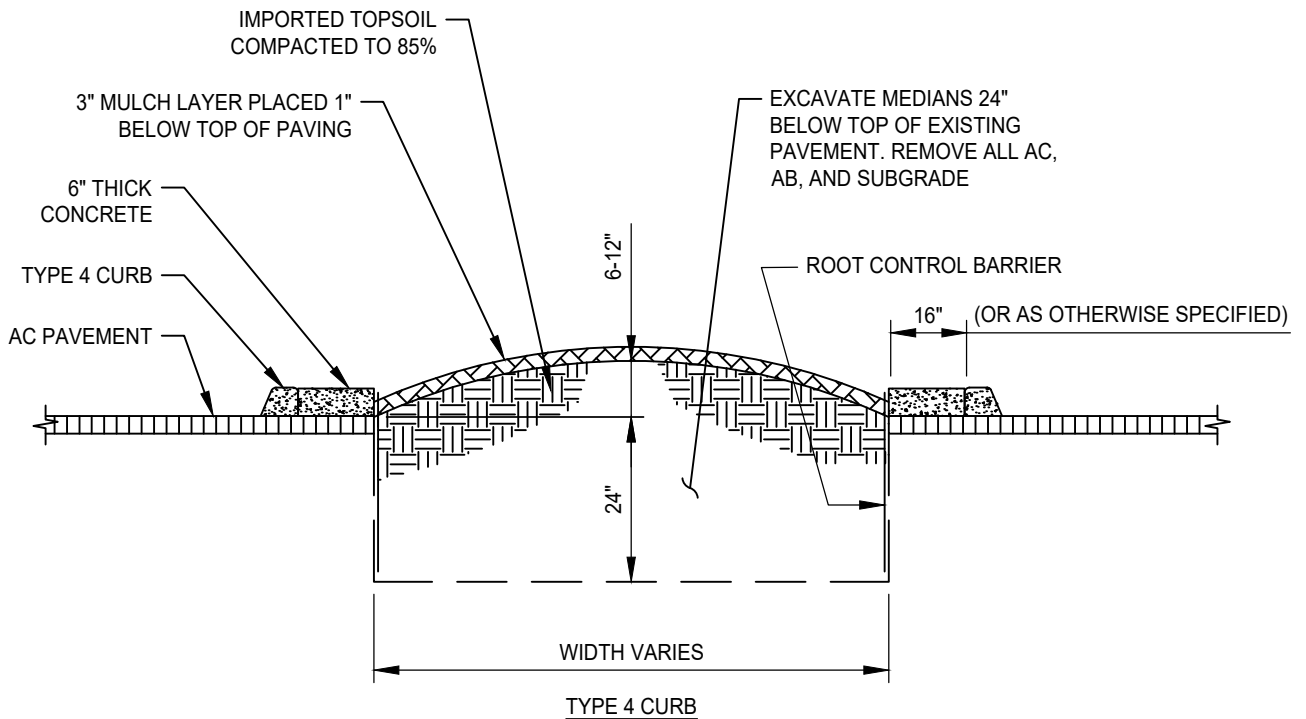
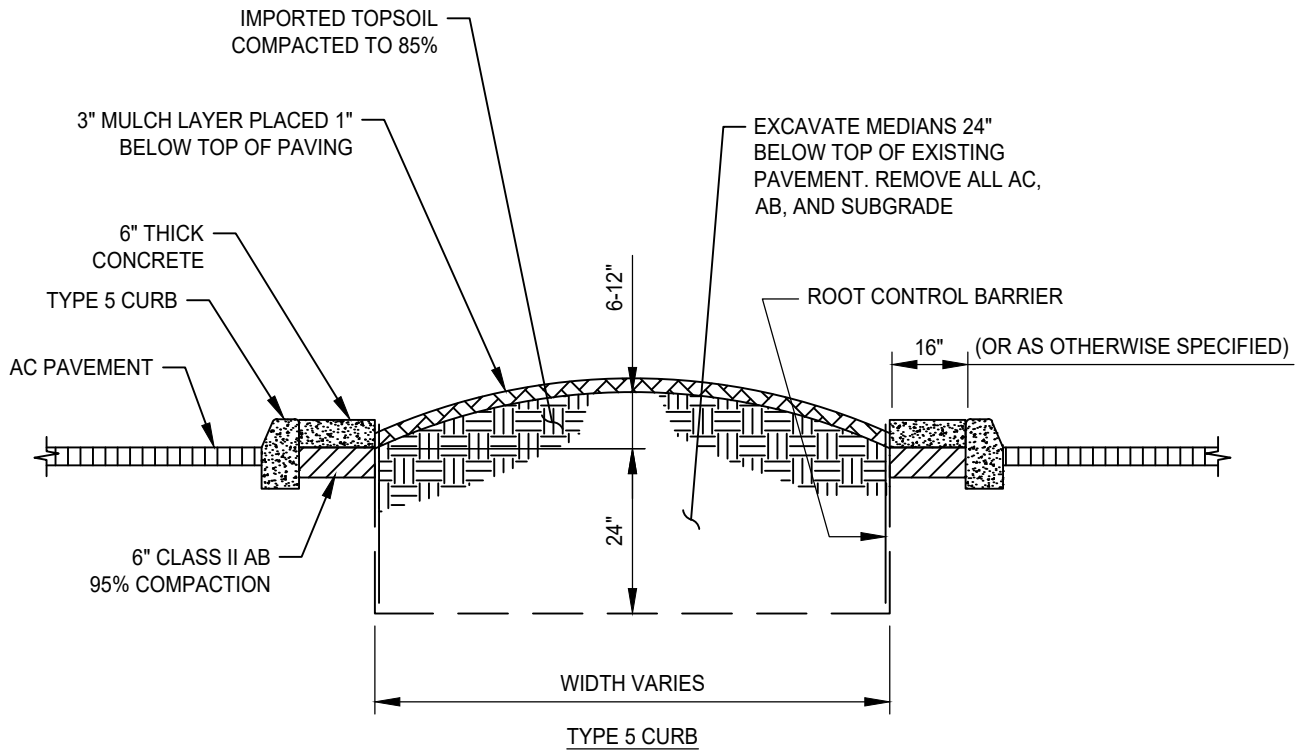
CITY OF ELK GROVE - PUBLIC WORKS

BIKE TRAIL PAVING SECTION

APPROVED BY:

 02/17/2021
 CITY ENGINEER DATE

DRAWING NUMBER
L - 25





NOTES:

1. CONTOUR OF MEDIAN WILL VARY DEPENDING UPON MEDIAN WIDTH. DO NOT EXCEED BID QUANTITY OF IMPORTED TOPSOIL TO ACHIEVE 12" HEIGHT.

DATE: 09/22/2017		NOT TO SCALE	
REVISION	BY	APPROVED	DATE

CITY OF ELK GROVE - PUBLIC WORKS

APPROVED BY:

Paul Murock

10/24/2018

CITY ENGINEER

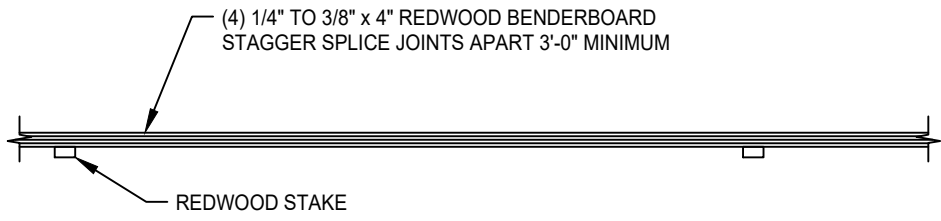
DATE

ROADWAY MEDIAN SECTION

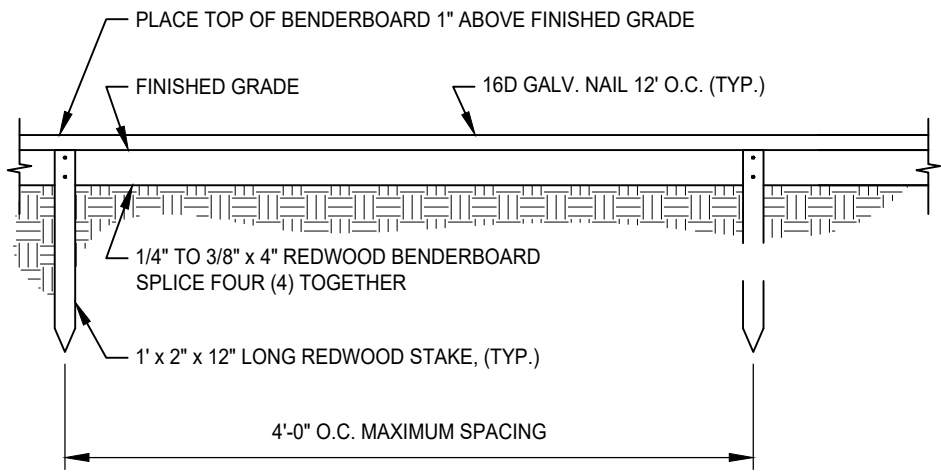


DRAWING NUMBER

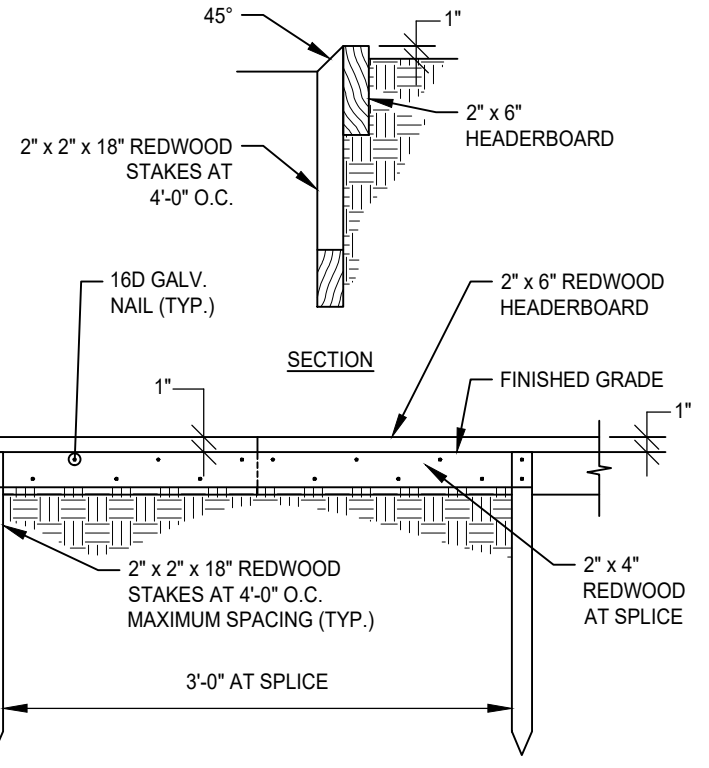
L - 26



BENDERBOARD PLAN VIEW



ELEVATION VIEW
1/4\"/>



SPLICE DETAIL
2\"/>

NOTES:

1. INSTALL ALL STAKES AND SPLICES ON PLANTING SIDE OF HEADERBOARD.
2. ALL NAILS SHALL BE GALVANIZED.
3. ALL REDWOOD SHALL BE ROUGH CONSTRUCTION COMMON GRADE IN ACCORDANCE TO CALIFORNIA REDWOOD ASSOCIATION GRADING RULES. DRIVE STAKES TO RESISTANCE AND CUT TOP AT 45 DEGREE ANGLE.

DATE: 09/22/2007		NOT TO SCALE	
REVISION	BY	APPROVED	DATE


CITY OF ELK GROVE - PUBLIC WORKS

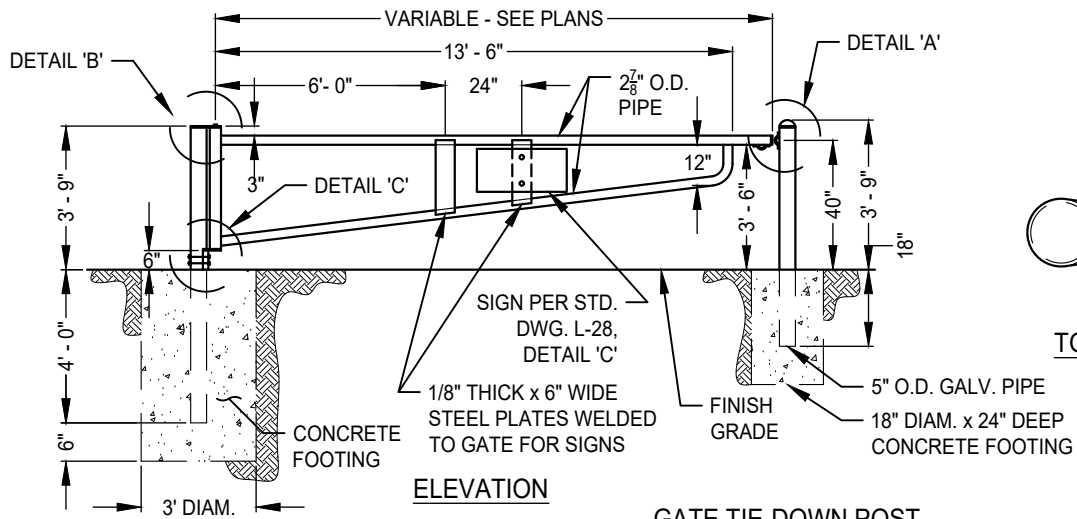
REDWOOD HEADERBOARD

APPROVED BY:
Paul Murock
CITY ENGINEER

10/24/2018
DATE

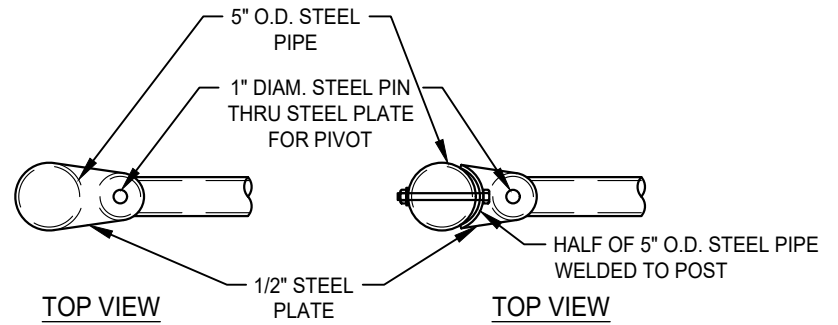
DRAWING NUMBER
L - 27





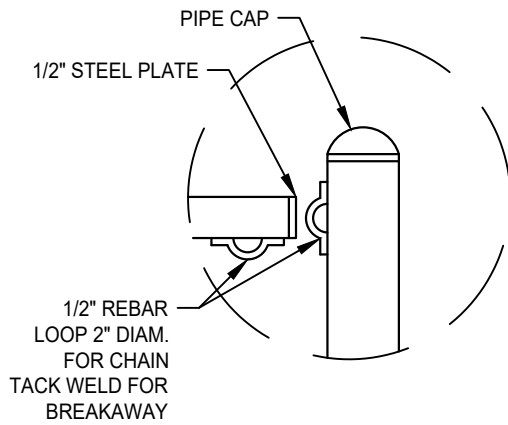
ELEVATION

GATE TIE-DOWN POST

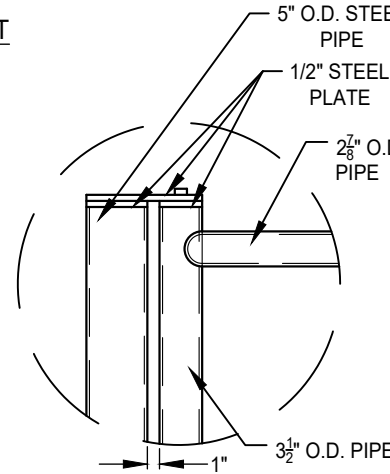


TOP VIEW

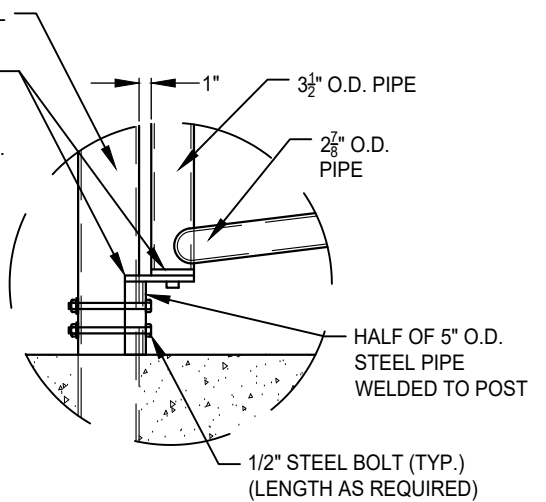
TOP VIEW



DETAIL 'A'



DETAIL 'B'



DETAIL 'C'

NOTES:

1. SINGLE PIPE GATE SHALL BE USED FOR ROADWAYS OR DRIVEWAYS UP TO 24' WIDE MAXIMUM OPENING.
2. ALL PIPES SHALL BE BLACK STEEL PIPES. OUTSIDE DIAMETER (O.D.) AND WELDED.
3. ALL STEEL TO BE PAINTED WITH 2 COATS OF PRIMER AND SAFETY YELLOW.
4. PROVIDE TWO (2) 5" O.D. PIPES AND INSTALL WITH CONCRETE FOOTING (18" X 24" D) FOR TIE-DOWN WHEN GATE IS OPENED AND CLOSED.

DATE: 09/22/2007		NOT TO SCALE	
REVISION	BY	APPROVED	DATE
1	SJB	SMA	04-12-2024
2	SJB	SMA	06-18-2025

CITY OF ELK GROVE - PUBLIC WORKS

APPROVED BY:

[Signature] 06-20-2025

CITY ENGINEER

DATE

SINGLE PIPE GATE



DRAWING NUMBER

L - 29